

REV	LOCATIONS	DESCRIPTION	DATE	REVISER	APPD

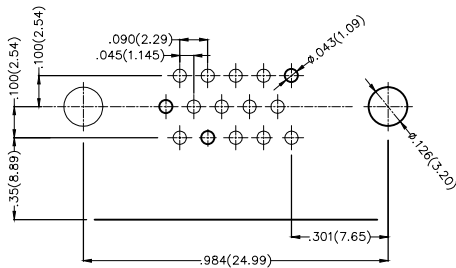
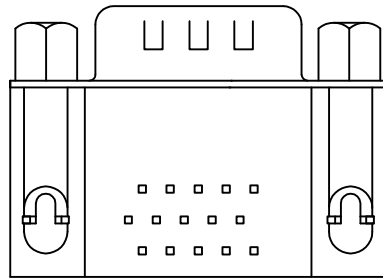
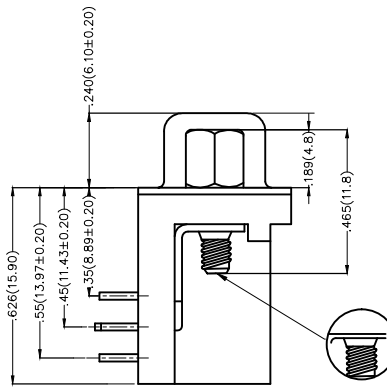
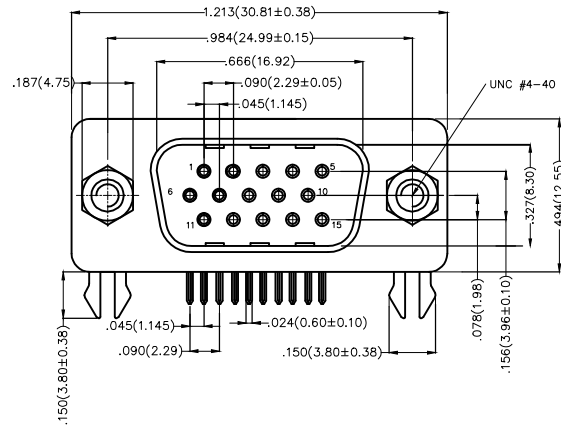


Electrical

Current Rating: 3A AC(rms)/DC
Voltage Rating: 250V AC(rms)/DC
Contact Resistance: 25 mΩ Max
Insulation Resistance: 1000 MΩ MIN
Withstanding Voltage: 500V AC r.m.s
Temperature Range-Operating: -55°C~+105°C

Material and Plating

Housing: PBT(UL 94V-0)
Contact Pin: Phosphor Bronze
Contact Plating: Selective gold in contact area, tin on tail
Shell: SPCC/ Nickel plated
Board lock: Copper alloy/ Tin plated
Screws: Copper alloy/ Nickel plated



Recommended P.C.Board Layout

Ordering Information

FDB 15 15 - M0 D B 3 XX XX K A
1 2 3 4 5 6 7 8 9 10 11

1 Category FDB-D-SUB Connectors	2 Circuits 15-15Circuits	3 Distinction No. 15	4 Type M0-Male	5 Assembly Layout D-DIP	6 Entry Angle B-90° Angle
7 Plating 3-Selective gold in contact area, tin on tail	8 Thickness of Plating 00-Gold Flash 03-3μ" Custom plate available	9 Color-Resin K6-Black U1-Blue	10 Packaging K-Tray	11 Distinction Type A-A Type	

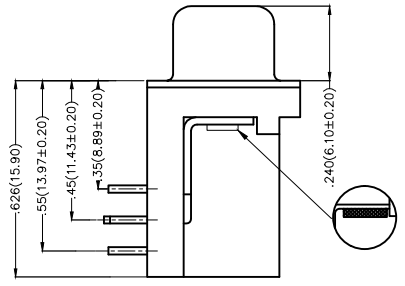
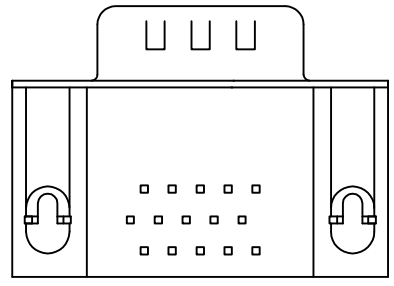
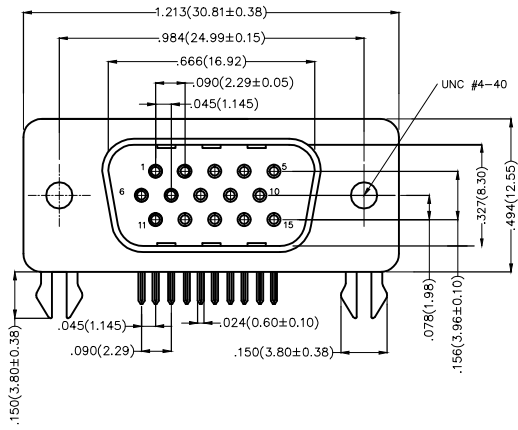
THIRD ANGLE PROJECTION	GENERAL TOLERANCES (UNLESS SPECIFIED)		APPROVE BY FRANK	DATE 28/JUN/13	PART NO. FDB1515-M0DB3XXXXKA	ITEM NO. FDB1515		
	DESIGN UNITS Inch (metric)	X.±.012(0.30) X.X±.008(0.20) X.XX±.006(0.15) X.XXX±.004(0.10)	X.±5° .X'±2° .XX'±1° .XXX'±0.5°	CHECKED BY JACOB	DATE 28/JUN/13	TITLE D-SUB Connectors 15 Circuits 90° Anglet Male		REV 0
SCALE 5:1	SIZE A4	DRAWN BY CHERRY		DATE 28/JUN/13	THIS DRAWING CONTAINS INFORMATION THAT IS PROPRIETARY TO DONG GUAN LANG LUN(3K-KAMING) ELECTRONIC PRODUCTS CO.,LTD. AND SHOULD NOT BE USED WITHOUT WRITTEN PERMISSION			

REV	LOCATIONS	DESCRIPTION	DATE	REVISER	APPD



Electrical
 Current Rating: 3A AC(rms)/DC
 Voltage Rating: 250V AC(rms)/DC
 Contact Resistance: 25 mΩ Max
 Insulation Resistance: 1000 MΩ MIN
 Withstanding Voltage: 500V AC r.m.s
 Temperature Range-Operating: -55°C ~ +105°C

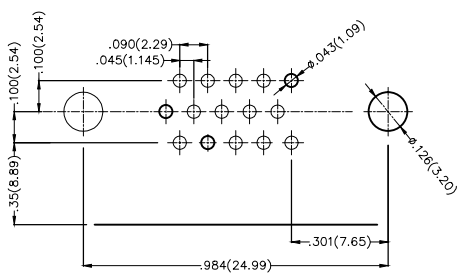
Material and Plating
 Housing: PBT(UL 94V-0)
 Contact Pin: Phosphor Bronze
 Contact Plating: Selective gold in contact area, tin on tail
 Shell: SPCC/ Nickel plated
 Board lock: Copper alloy/ Tin plated



Ordering Information

FDB 15 15 - M0 D B 3 XX XX K B
 1 2 3 4 5 6 7 8 9 10 11

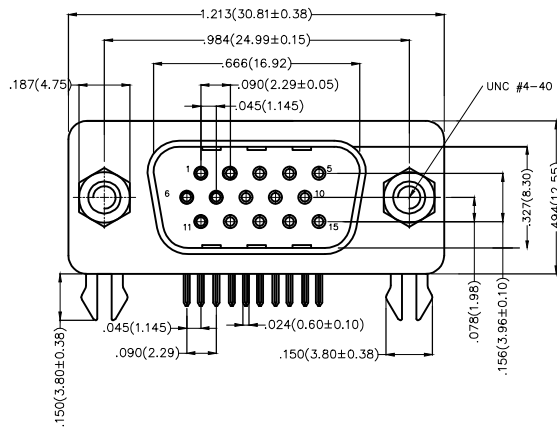
1 Category FDB-D-SUB Connectors	2 Circuits 15-15Circuits	3 Distinction No. 15	4 Type M0-Male	5 Assembly Layout D-DIP	6 Entry Angle B-90° Angle
7 Plating 3-Selective gold in contact area, tin on tail	8 Thickness of Plating 00-Gold Flash 03-3μ" Custom plate available	9 Color-Resin K6-Black U1-Blue	10 Packaging K-Tray	11 Distinction Type B-B Type	



Recommended P.C.Board Layout

THIRD ANGLE PROJECTION	GENERAL TOLERANCES (UNLESS SPECIFIED)		APPROVE BY FRANK	DATE 28/JUN/13	PART NO. FDB1515-M0DB3XXXXKB	ITEM NO. FDB1515	
	X.±.012(0.30)	X.±5'	CHECKED BY JACOB	DATE 28/JUN/13	TITLE D-SUB Connectors 15 Circuits 90° Anglet Male		
DESIGN UNITS Inch (metric)	X.XX±.008(0.20)	.X'±2'	DRAWN BY CHERRY	DATE 28/JUN/13	THIS DRAWING CONTAINS INFORMATION THAT IS PROPRIETARY TO DONG GUAN LANG LUN(3K-KAMING) ELECTRONIC PRODUCTS CO.,LTD. AND SHOULD NOT BE USED WITHOUT WRITTEN PERMISSION		
SCALE 5:1	SIZE A4	X.XX±.006(0.15)					
		X.XXX±.004(0.10)					

REV	LOCATIONS	DESCRIPTION	DATE	REVISER	APPD

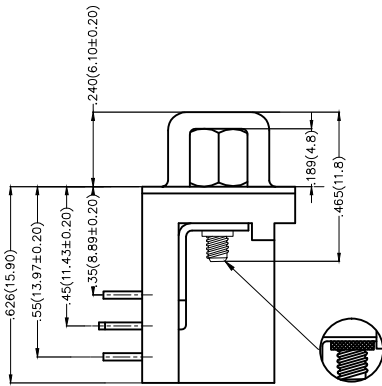
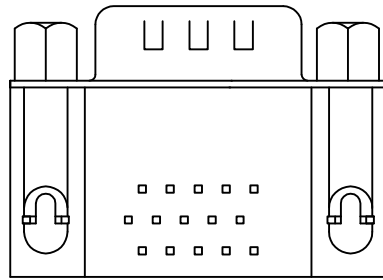


Electrical

Current Rating: 3A AC(rms)/DC
Voltage Rating: 250V AC(rms)/DC
Contact Resistance: 25 mΩ Max
Insulation Resistance: 1000 MΩ MIN
Withstanding Voltage: 500V AC r.m.s
Temperature Range-Operating: -55°C ~ +105°C

Material and Plating

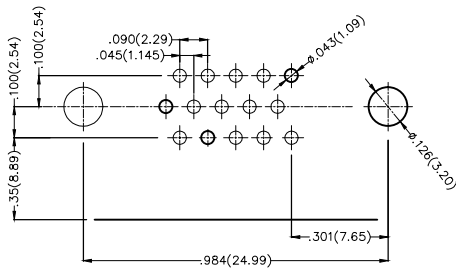
Housing: PBT(UL 94V-0)
Contact Pin: Phosphor Bronze
Contact Plating: Selective gold in contact area, tin on tail
Shell: SPCC/ Nickel plated
Board lock: Copper alloy/ Tin plated
Screws: Copper alloy/ Nickel plated



Ordering Information

FDB 15 15 - M0 D B 3 XX XX K C
1 2 3 4 5 6 7 8 9 10 11

1 Category FDB-D-SUB Connectors	2 Circuits 15-15Circuits	3 Distinction No. 15	4 Type M0-Male	5 Assembly Layout D-DIP	6 Entry Angle B-90° Angle
7 Plating 3-Selective gold in contact area, tin on tail	8 Thickness of Plating 00-Gold Flash 03-3μ" Custom plate available	9 Color-Resin K6-Black U1-Blue	10 Packaging K-Tray	11 Distinction Type C-C Type	



Recommended P.C.Board Layout

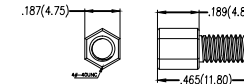
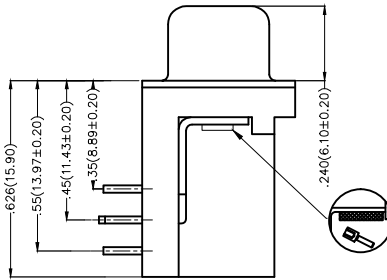
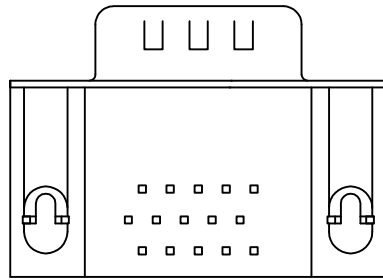
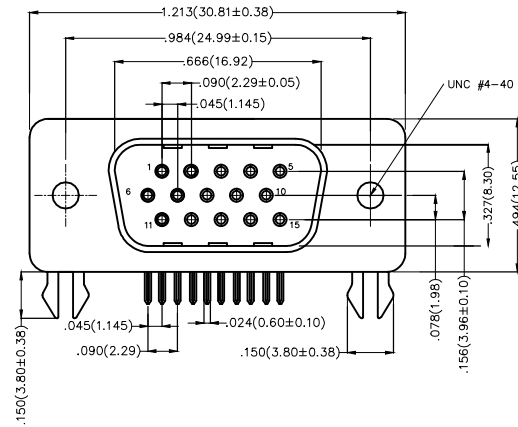
THIRD ANGLE PROJECTION	GENERAL TOLERANCES (UNLESS SPECIFIED)		APPROVE BY FRANK	DATE 28/JUN/13	PART NO. FDB1515-M0DB3XXXXKC	ITEM NO. FDB1515	
	DESIGN UNITS Inch (metric)	X.X±.012(0.30) .X'±5"	CHECKED BY JACOB	DATE 28/JUN/13	TITLE D-SUB Connectors 15 Circuits 90° Anglet Male		
SCALE 5:1	SIZE A4	X.XX±.006(0.15) .XX'±1"	DRAWN BY CHERRY	DATE 28/JUN/13	THIS DRAWING CONTAINS INFORMATION THAT IS PROPRIETARY TO DONG GUAN LANG JUN(3K-KAMING) ELECTRONIC PRODUCTS CO.,LTD. AND SHOULD NOT BE USED WITHOUT WRITTEN PERMISSION		

REV	LOCATIONS	DESCRIPTION	DATE	REVISER	APPD



Electrical
 Current Rating: 3A AC(rms)/DC
 Voltage Rating: 250V AC(rms)/DC
 Contact Resistance: 25 mΩ Max
 Insulation Resistance: 1000 MΩ MIN
 Withstanding Voltage: 500V AC r.m.s
 Temperature Range-Operating: -55°C ~ +105°C

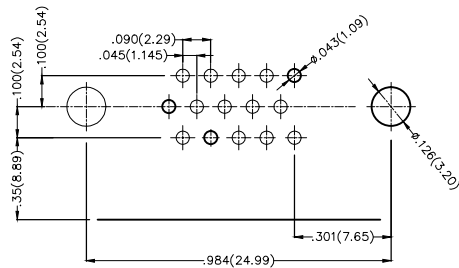
Material and Plating
 Housing: PBT(UL 94V-0)
 Contact Pin: Phosphor Bronze
 Contact Plating: Selective gold in contact area, tin on tail
 Shell: SPCC/ Nickel plated
 Board lock: Copper alloy/ Tin plated
 Screws: Copper alloy/ Nickel plated



Ordering Information

FDB 15 15 - M0 D B 3 XX XX K D
 1 2 3 4 5 6 7 8 9 10 11

1 Category FDB-D-SUB Connectors	2 Circuits 15-15Circuits	3 Distinction No. 15	4 Type M0-Male	5 Assembly Layout D-DIP	6 Entry Angle B-90° Angle
7 Plating 3-Selective gold in contact area, tin on tail	8 Thickness of Plating 00-Gold Flash 03-3μ" Custom plate available	9 Color-Resin K6-Black U1-Blue	10 Packaging K-Tray	11 Distinction Type D-D Type	



Recommended P.C.Board Layout

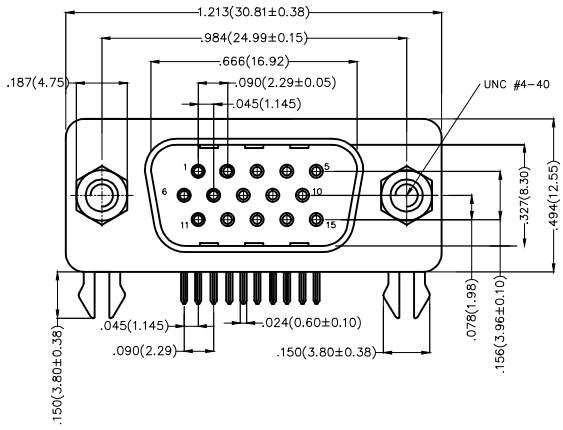
 THIRD ANGLE PROJECTION DESIGN UNITS Inch (metric) SCALE 5:1 SIZE A4	GENERAL TOLERANCES (UNLESS SPECIFIED) X.±0.012(0.30) X.±5' X.X±.008(0.20) X.±2' X.XX±.006(0.15) .XX±1' X.XXX±.004(0.10) .XXX±0.5'		APPROVE BY FRANK CHECKED BY JACOB DRAWN BY CHERRY	DATE 28/JUN/13 DATE 28/JUN/13 DATE 28/JUN/13	PART NO. FDB1515-M0DB3XXXXKD TITLE D-SUB Connectors 15 Circuits 90° Anglet Male	ITEM NO. FDB1515 REV 0	 SHEET NO. 1/1
	THIS DRAWING CONTAINS INFORMATION THAT IS PROPRIETARY TO DONG GUAN LANG LUN(3K-KAMI NG) ELECTRONIC PRODUCTS CO., LTD. AND SHOULD NOT BE USED WITHOUT WRITTEN PERMISSION						

1 2 3 4 5 6 7 8

REV	LOCATIONS	DESCRIPTION	DATE	REVISER	APPD

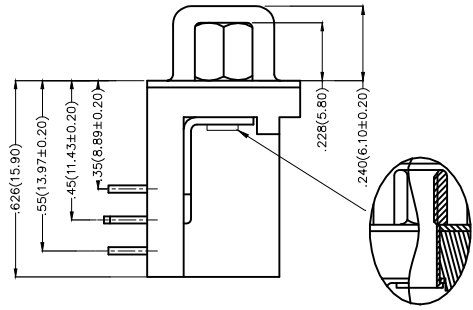
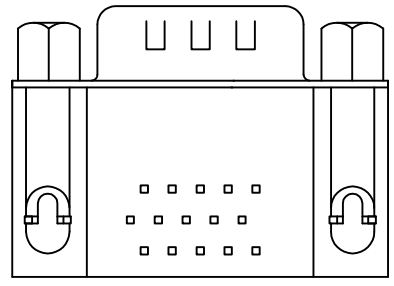
A
B
C
D
E
F

A
B
C
D
E
F



Electrical
 Current Rating: 3A AC(rms)/DC
 Voltage Rating: 250V AC(rms)/DC
 Contact Resistance: 25 mΩ Max
 Insulation Resistance: 1000 MΩ MIN
 Withstanding Voltage: 500V AC r.m.s
 Temperature Range—Operating: -55°C ~ +105°C

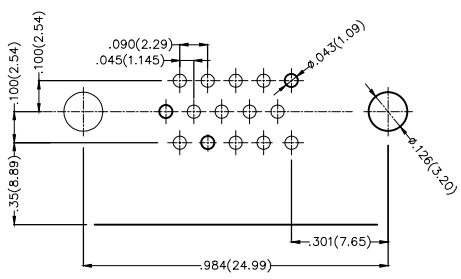
Material and Plating
 Housing: PBT (UL 94V-0)
 Contact Pin: Phosphor Bronze
 Contact Plating: Selective gold in contact area, tin on tail
 Shell: SPCC/ Nickel plated
 Board lock: Copper alloy/ Tin plated
 Nuts: Copper alloy/ Nickel plated



Ordering Information

FDB 15 15 - M0 D B 3 XX XX K E
 1 2 3 4 5 6 7 8 9 10 11

1 Category FDB-D-SUB Connectors	2 Circuits 15-15Circuits	3 Distinction No. 15	4 Type M0-Male	5 Assembly Layout D-DIP	6 Entry Angle B-90° Angle
7 Plating 3-Selective gold in contact area, tin on tail	8 Thickness of Plating 00-Gold Flash 03-3μ" Custom plate available	9 Color-Resin K6-Black U1-Blue	10 Packaging K-Tray	11 Distinction Type E-E Type	



Recommended P.C.Board Layout

THIRD ANGLE PROJECTION	GENERAL TOLERANCES (UNLESS SPECIFIED)		APPROVE BY FRANK	DATE 28/JUN/13	PART NO. FDB1515-M0DB3XXXXKE	ITEM NO. FDB1515	
	DESIGN UNITS Inch (metric)	X.X±.012(0.30) .X'±5'	CHECKED BY JACOB	DATE 28/JUN/13	TITLE D-SUB Connectors 15 Circuits 90° Anglet Male		
SCALE 5:1	SIZE A4	X.XX±.006(0.15) .XXX±.004(0.10)	DRAWN BY CHERRY	DATE 28/JUN/13	THIS DRAWING CONTAINS INFORMATION THAT IS PROPRIETARY TO DONG GUAN LANG LUN(3K-KAMING) ELECTRONIC PRODUCTS CO.,LTD. AND SHOULD NOT BE USED WITHOUT WRITTEN PERMISSION		

1 2 3 4 5 6 7 8