

REV	LOCATIONS	DESCRIPTION	DATE	REVISER	APPD



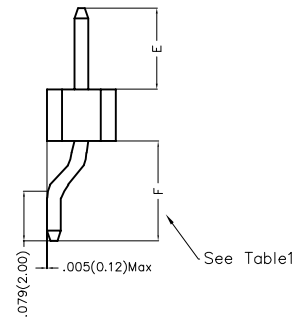
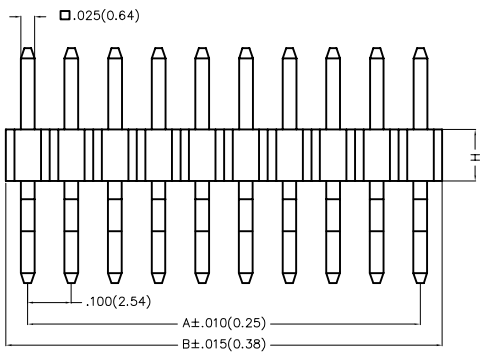
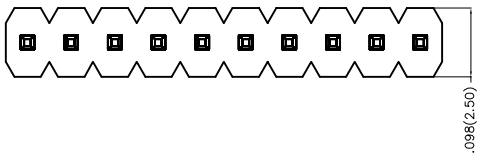
**SPECIFICATIONS**

**Electrical**

Current Rating: 3A AC(rms)/DC  
Voltage Rating: 250V AC(rms)/DC  
Contact Resistance: 20 mΩ Max  
Insulation Resistance: 1000 MΩ Min  
Withstanding Voltage: 600V AC r.m.s  
Temperature Range-Operating: -40°C~+105°C

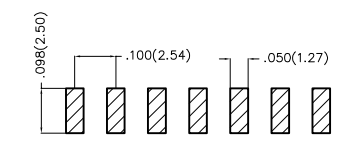
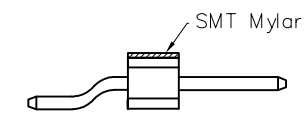
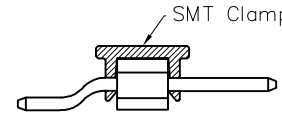
**Material and Plating**

Housing: Glass Filled Polyester (UL94V-0) Black  
Pin: Brass  
Pin Plating: Gold plated/ Selective gold plated on contact area and 120μ" Min. matte tin plated on tails area



Packaging: M-Reel(With Cap)

Packaging: W-Reel(With Mylar)



Recommended P.C.Board Layout

**Ordering Information**

FPH 254 67 - S XX B X XX 4 XX XX X 0 X  
1 2 3 4 5 6 7 8 9 10 11 12 13

1 Category FPH-Pin Header	2 Series Number 254-Pitch2.54mm	3 Distinction No. 67	4 Row Option S-Single Row	5 Circuits XX	6 Entry Angle B-90° Angle	7 Plating 1-Gold plated 7-Selective gold plated on contact area and matte tin plated on tails area
8 Thickness of Plating 01-1μ" 15-15μ" Custom plate available	9 Material-Resin 4-PA6T	10 E Size 01,02...-Serial number (See Table1)	11 F Size 01,02...-Serial number (See Table1)	12 H Size 1,2...-Serial number (See Table1)	13 Packaging M-Reel(With Cap) W-Reel(With Mylar)	



THIRD ANGLE PROJECTION	GENERAL TOLERANCES (UNLESS SPECIFIED)		APPROVE BY FRANK	DATE 24/DEC/19	PART NO. FPH25467-SXXBXX4XXXXXX	ITEM NO. FPH25467	
	X.±0.12(0.30)	X'.±5'	CHECKED BY CHERRY	DATE 24/DEC/19	TITLE Board to Board(Pin Header) Pitch 2.54mm 90° Angle(SMT)		
DESIGN UNITS Inch (metric)	X.XX±.008(0.20)	.X'±2'	DRAWN BY ZOEY	DATE 24/DEC/19	THIS DRAWING CONTAINS INFORMATION THAT IS PROPRIETARY TO DONG GUAN LANG LUN(3K-KAMING) ELECTRONIC PRODUCTS CO.,LTD. AND SHOULD NOT BE USED WITHOUT WRITTEN PERMISSION		SHEET NO. 1/3
SCALE 5:1	SIZE A<	X.XX±.006(0.15)					
		X.XXX±.004(0.10)					

1 2 3 4 5 6 7 8

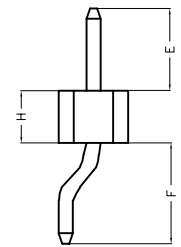
REV	LOCATIONS	DESCRIPTION	DATE	REVISED	APPD



Table1

Serial number	Dimensions(in/mm) E	Serial number	Dimensions(in/mm) E
01	.059(1.50)	19	.236(6.00)
02	.069(1.75)	20	.246(6.25)
03	.079(2.00)	21	.256(6.50)
04	.089(2.25)	22	.266(6.75)
05	.098(2.50)	23	.276(7.00)
06	.108(2.75)	24	.285(7.25)
07	.118(3.00)	25	.295(7.50)
08	.128(3.25)	26	.305(7.75)
09	.138(3.50)	27	.315(8.00)
10	.148(3.75)	28	.325(8.25)
11	.157(4.00)	29	.335(8.50)
12	.167(4.25)	30	.344(8.75)
13	.177(4.50)	31	.354(9.00)
14	.187(4.75)	32	.364(9.25)
15	.197(5.00)	33	.374(9.50)
16	.207(5.25)	34	.384(9.75)
17	.217(5.50)	35	.394(10.00)
18	.226(5.75)		

Serial number	Dimensions(in/mm) F	Serial number	Dimensions(in/mm) F
01	.157(4.00)	19	.335(8.50)
02	.167(4.25)	20	.344(8.75)
03	.177(4.50)	21	.354(9.00)
04	.187(4.75)	22	.364(9.25)
05	.197(5.00)	23	.374(9.50)
06	.207(5.25)	24	.384(9.75)
07	.217(5.50)	25	.394(10.00)
08	.226(5.75)		
09	.236(6.00)		
10	.246(6.25)		
11	.256(6.50)		
12	.266(6.75)		
13	.276(7.00)		
14	.285(7.25)		
15	.295(7.50)		
16	.305(7.75)		
17	.315(8.00)		
18	.325(8.25)		



Serial number	Dimensions(in/mm) H
1	.039(1.00)
2	.059(1.50)
3	.079(2.00)
4	.098(2.50)



<p>THIRD ANGLE PROJECTION</p>	GENERAL TOLERANCES (UNLESS SPECIFIED)		APPROVE BY FRANK	DATE 24/DEC/19	PART NO. FPH25467-SXXBXXX4XXXXXX	ITEM NO. FPH25467	<p>3K-KAMING®</p>	
	X.±.012(0.30)	X.±5'	CHECKED BY CHERRY	DATE 24/DEC/19	TITLE Board to Board(Pin Header) Pitch 2.54mm 90° Angle(SMT)			REV 0
	DESIGN UNITS Inch (metric)	X.X±.008(0.20)	.X'±2'	DRAWN BY ZOEY	DATE 24/DEC/19	THIS DRAWING CONTAINS INFORMATION THAT IS PROPRIETARY TO DONG GUAN LANG LUN(3K-KAMING) ELECTRONIC PRODUCTS CO.,LTD. AND SHOULD NOT BE USED WITHOUT WRITTEN PERMISSION		
	SCALE 5:1	SIZE AZ	X.XX±.006(0.15)					

1 2 3 4 5 6 7 8

REV	LOCATIONS	DESCRIPTION	DATE	REVISER	APPD



Circuits (n)	Part No.	Dimensions(in/mm)		Circuits (n)	Part No.	Dimensions(in/mm)	
		A	B			A	B
1	FPH25467-S01BXXX4XXXXX0X	—	.100(2.54)	21	FPH25467-S21BXXX4XXXXX0X	2.000(50.80)	2.100(53.34)
2	FPH25467-S02BXXX4XXXXX0X	.100(2.54)	.200(5.08)	22	FPH25467-S22BXXX4XXXXX0X	2.100(53.34)	2.200(55.88)
3	FPH25467-S03BXXX4XXXXX0X	.200(5.08)	.300(7.62)	23	FPH25467-S23BXXX4XXXXX0X	2.200(55.88)	2.300(58.42)
4	FPH25467-S04BXXX4XXXXX0X	.300(7.62)	.400(10.16)	24	FPH25467-S24BXXX4XXXXX0X	2.300(58.42)	2.400(60.96)
5	FPH25467-S05BXXX4XXXXX0X	.400(10.16)	.500(12.70)	25	FPH25467-S25BXXX4XXXXX0X	2.400(60.96)	2.500(63.50)
6	FPH25467-S06BXXX4XXXXX0X	.500(12.70)	.600(15.24)	26	FPH25467-S26BXXX4XXXXX0X	2.500(63.50)	2.600(66.04)
7	FPH25467-S07BXXX4XXXXX0X	.600(15.24)	.700(17.78)	27	FPH25467-S27BXXX4XXXXX0X	2.600(66.04)	2.700(68.58)
8	FPH25467-S08BXXX4XXXXX0X	.700(17.78)	.800(20.32)	28	FPH25467-S28BXXX4XXXXX0X	2.700(68.58)	2.800(71.12)
9	FPH25467-S09BXXX4XXXXX0X	.800(20.32)	.900(22.86)	29	FPH25467-S29BXXX4XXXXX0X	2.800(71.12)	2.900(73.66)
10	FPH25467-S10BXXX4XXXXX0X	.900(22.86)	1.000(25.40)	30	FPH25467-S30BXXX4XXXXX0X	2.900(73.66)	3.000(76.20)
11	FPH25467-S11BXXX4XXXXX0X	1.000(25.40)	1.100(27.94)	31	FPH25467-S31BXXX4XXXXX0X	3.000(76.20)	3.100(78.74)
12	FPH25467-S12BXXX4XXXXX0X	1.100(27.94)	1.200(30.48)	32	FPH25467-S32BXXX4XXXXX0X	3.100(78.74)	3.200(81.28)
13	FPH25467-S13BXXX4XXXXX0X	1.200(30.48)	1.300(33.02)	33	FPH25467-S33BXXX4XXXXX0X	3.200(81.28)	3.300(83.82)
14	FPH25467-S14BXXX4XXXXX0X	1.300(33.02)	1.400(35.56)	34	FPH25467-S34BXXX4XXXXX0X	3.300(83.82)	3.400(86.36)
15	FPH25467-S15BXXX4XXXXX0X	1.400(35.56)	1.500(38.10)	35	FPH25467-S35BXXX4XXXXX0X	3.400(86.36)	3.500(88.90)
16	FPH25467-S16BXXX4XXXXX0X	1.500(38.10)	1.600(40.64)	36	FPH25467-S36BXXX4XXXXX0X	3.500(88.90)	3.600(91.44)
17	FPH25467-S17BXXX4XXXXX0X	1.600(40.64)	1.700(43.18)	37	FPH25467-S37BXXX4XXXXX0X	3.600(91.44)	3.700(93.98)
18	FPH25467-S18BXXX4XXXXX0X	1.700(43.18)	1.800(45.72)	38	FPH25467-S38BXXX4XXXXX0X	3.700(93.98)	3.800(96.52)
19	FPH25467-S19BXXX4XXXXX0X	1.800(45.72)	1.900(48.26)	39	FPH25467-S39BXXX4XXXXX0X	3.800(96.52)	3.900(99.06)
20	FPH25467-S20BXXX4XXXXX0X	1.900(48.26)	2.000(50.80)	40	FPH25467-S40BXXX4XXXXX0X	3.900(99.06)	4.000(101.60)



 THIRD ANGLE PROJECTION	GENERAL TOLERANCES (UNLESS SPECIFIED)		APPROVE BY FRANK	DATE 24/DEC/19	PART NO. FPH25467-SXXBXXX4XXXXX0X	ITEM NO. FPH25467	 3K-KAMING	
	X.±.012(0.30)	X'.±5'	CHECKED BY CHERRY	DATE 24/DEC/19	TITLE Board to Board(Pin Header) Pitch 2.54mm 90° Angle(SMT)			REV 0 SHEET NO. 3/3
	X.XX±.008(0.20)	.X'±2'	DRAWN BY ZOEY	DATE 24/DEC/19	THIS DRAWING CONTAINS INFORMATION THAT IS PROPRIETARY TO DONG GUAN LANG LUN(3K-KAMING) ELECTRONIC PRODUCTS CO., LTD. AND SHOULD NOT BE USED WITHOUT WRITTEN PERMISSION			
	X.XX±.006(0.15)	.XX'±1'						
SCALE 5:1	SIZE A/L	X.XXX±.004(0.10)	.XXX'±0.5'					