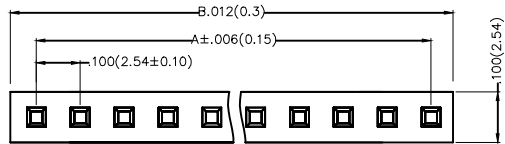


1 2 3 4 5 6 7 8

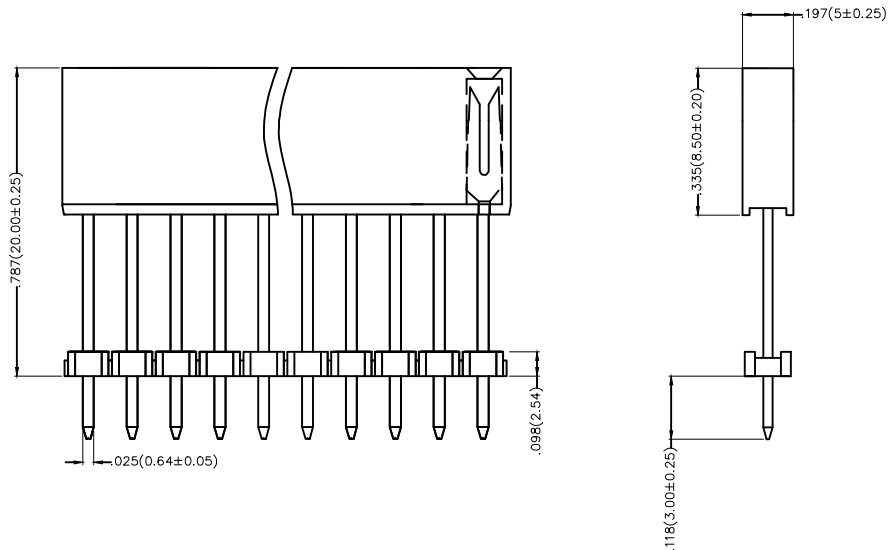
REV	LOCATIONS	DESCRIPTION	DATE	REVISER	APPD

A



Electrical
 Current Rating: 3A AC(rms)/DC
 Voltage Rating: 250V AC(rms)/DC
 Contact Resistance: 20 mΩ Max
 Insulation Resistance: 1000 MΩ MIN
 Withstanding Voltage: 500V AC r.m.s
 Temperature Range-Operating: -40°C~+105°C
 Material and Plating
 Housing: PBT/PA6T(UL 94V-0)
 Contact Pin: Brass
 Plating: Gold Plated/Selective gold in contact area,
 tin on tail

B



C

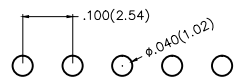
D

Ordering Information

FFH 254 41 - S XX S X XX X K6 K
 1 2 3 4 5 6 7 8 9 10 11

E

1 Category FFH-Female Header	2 Series Number 254-Pitch2.54mm	3 Distinction No. 41	4 Row Option S-Single row	5 Circuits XX	6 Entry Angle S-180° Vertical
7 Plating 1-Gold Plated 3-Selective gold in contact area, tin on tail	8 Thickness of Plating 00-Gold Flash 05-5μ" Custom plate available	9 Material-Resin 1-PBT 4-PA6T	10 Color-Resin K6-Black	11 Packaging K-Tray	



Recommended P.C.Board Layout

F

 THIRD ANGLE PROJECTION DESIGN UNITS Inch (metric) SCALE 5:1 SIZE A4	GENERAL TOLERANCES (UNLESS SPECIFIED)		APPROVE BY FRANK	DATE 20/AUG/13	PART NO. FFH25441-SXXSXXXK6K	ITEM NO. FFH25441	 3K-KAMING REV 0 SHEET NO. 1/2
	X.±.012(0.30)	X'.±5'	CHECKED BY CHERRY	DATE 20/AUG/13	TITLE Board to Board (Female Header) Pitch 2.54mm 180° Vertical (DIP)		
	X.XX±.008(0.20)	.X'±2'	DRAWN BY KEVIN	DATE 20/AUG/13	THIS DRAWING CONTAINS INFORMATION THAT IS PROPRIETARY TO DONG GUAN LANG LUN(3K-KAMING) ELECTRONIC PRODUCTS CO.,LTD. AND SHOULD NOT BE USED WITHOUT WRITTEN PERMISSION		
X.XX±.006(0.15)	.XX'±1'						
X.XXX±.004(0.10)	.XXX'±0.5'						

1 2 3 4 5 6 7 8



REV	LOCATIONS	DESCRIPTION	DATE	REVISER	APPD

Circuits (n)	Part No.	Dimensions(in/mm)		Circuits (n)	Part No.	Dimensions(in/mm)	
		A	B			A	B
2	FFH25441-S02SXXXXK6K	.100(2.54)	.220(5.58)	22	FFH25441-S22SXXXXK6K	2.100(53.34)	2.220(56.38)
3	FFH25441-S03SXXXXK6K	.200(5.08)	.320(8.12)	23	FFH25441-S23SXXXXK6K	2.200(55.88)	2.320(58.92)
4	FFH25441-S04SXXXXK6K	.300(7.62)	.420(10.66)	24	FFH25441-S24SXXXXK6K	2.300(58.42)	2.420(61.46)
5	FFH25441-S05SXXXXK6K	.400(10.16)	.520(13.20)	25	FFH25441-S25SXXXXK6K	2.400(60.96)	2.520(64.00)
6	FFH25441-S06SXXXXK6K	.500(12.70)	.620(15.74)	26	FFH25441-S26SXXXXK6K	2.500(63.50)	2.620(66.54)
7	FFH25441-S07SXXXXK6K	.600(15.24)	.720(18.28)	27	FFH25441-S27SXXXXK6K	2.600(66.04)	2.720(69.08)
8	FFH25441-S08SXXXXK6K	.700(17.78)	.820(20.82)	28	FFH25441-S28SXXXXK6K	2.700(68.58)	2.820(71.62)
9	FFH25441-S09SXXXXK6K	.800(20.32)	.920(23.36)	29	FFH25441-S29SXXXXK6K	2.800(71.12)	2.920(74.16)
10	FFH25441-S10SXXXXK6K	.900(22.86)	1.020(25.90)	30	FFH25441-S30SXXXXK6K	2.900(73.66)	3.020(76.70)
11	FFH25441-S11SXXXXK6K	1.000(25.40)	1.120(28.44)	31	FFH25441-S31SXXXXK6K	3.000(76.20)	3.120(79.24)
12	FFH25441-S12SXXXXK6K	1.100(27.94)	1.220(30.98)	32	FFH25441-S32SXXXXK6K	3.100(78.74)	3.220(81.78)
13	FFH25441-S13SXXXXK6K	1.200(30.48)	1.320(33.52)	33	FFH25441-S33SXXXXK6K	3.200(81.28)	3.320(84.32)
14	FFH25441-S14SXXXXK6K	1.300(33.02)	1.420(36.06)	34	FFH25441-S34SXXXXK6K	3.300(83.82)	3.420(86.86)
15	FFH25441-S15SXXXXK6K	1.400(35.56)	1.520(38.60)	35	FFH25441-S35SXXXXK6K	3.400(86.36)	3.520(89.40)
16	FFH25441-S16SXXXXK6K	1.500(38.10)	1.620(41.14)	36	FFH25441-S36SXXXXK6K	3.500(88.90)	3.620(91.94)
17	FFH25441-S17SXXXXK6K	1.600(40.64)	1.720(43.68)	37	FFH25441-S37SXXXXK6K	3.600(91.44)	3.720(94.48)
18	FFH25441-S18SXXXXK6K	1.700(43.18)	1.820(46.22)	38	FFH25441-S38SXXXXK6K	3.700(93.98)	3.820(97.02)
19	FFH25441-S19SXXXXK6K	1.800(45.72)	1.920(48.76)	39	FFH25441-S39SXXXXK6K	3.800(96.52)	3.920(99.56)
20	FFH25441-S20SXXXXK6K	1.900(48.26)	2.020(51.30)	40	FFH25441-S40SXXXXK6K	3.900(99.06)	4.020(102.10)
21	FFH25441-S21SXXXXK6K	2.000(50.80)	2.120(53.84)				

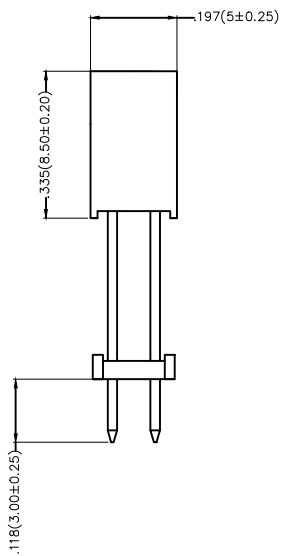
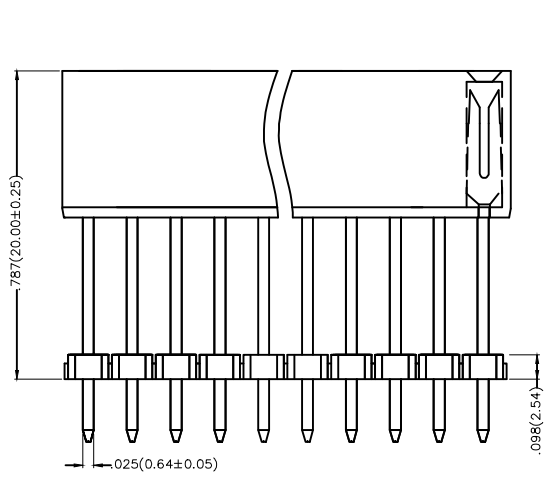
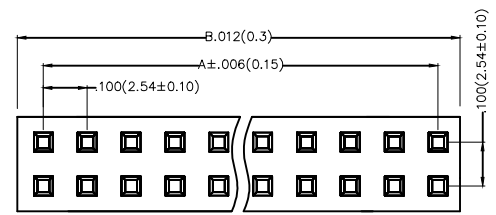


 THIRD ANGLE PROJECTION	GENERAL TOLERANCES (UNLESS SPECIFIED)		APPROVE BY	DATE	PART NO.	ITEM NO.	 3K-KAMING
	X.±.012(0.30)	X.±5'	FRANK	20/AUG/13	FFH25441-SXXSXXXXK6K	FFH25441	
	X.X±.008(0.20)	.X'±2"	CHECKED BY	DATE	TITLE		
	X.XX±.006(0.15)	.XX'±1"	CHERRY	20/AUG/13	Board to Board (Female Header) Pitch 2.54mm 180° Vertical (DIP)	REV 0 SHEET NO. 2/2	
SCALE	SIZE	X.XXX±.004(0.10)	.XXX'±0.5'	DRAWN BY	DATE	THIS DRAWING CONTAINS INFORMATION THAT IS PROPRIETARY TO DONG GUAN LANG LUN(3K-KAMING) ELECTRONIC PRODUCTS CO.,LTD. AND SHOULD NOT BE USED WITHOUT WRITTEN PERMISSION	
5:1	A4			KEVIN	20/AUG/13		



REV	LOCATIONS	DESCRIPTION	DATE	REVISER	APPD

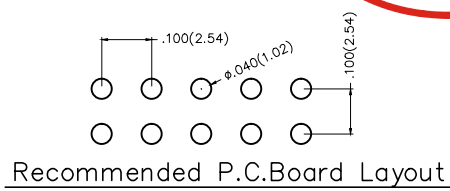
Electrical
 Current Rating: 3A AC(rms)/DC
 Voltage Rating: 250V AC(rms)/DC
 Contact Resistance: 20 mΩ Max
 Insulation Resistance: 1000 MΩ MIN
 Withstanding Voltage: 500V AC r.m.s
 Temperature Range-Operating: -40°C~+105°C
 Material and Plating
 Housing: PBT/PA6T(UL 94V-0)
 Contact Pin: Brass
 Plating: Gold Plated/Selective gold in contact area, tin on tail



Ordering Information

FFH 254 41 - D XX S X XX X K6 K
 1 2 3 4 5 6 7 8 9 10 11

- 1 Category: FFH-Female Header
- 2 Series Number: 254-Pitch2.54mm
- 3 Distinction No.: 41
- 4 Row Option: D-Double Row
- 5 Circuits: XX
- 6 Entry Angle: S-180° Vertical
- 7 Plating: 1-Gold Plated, 3-Selective gold in contact area, tin on tail
- 8 Thickness of Plating: 00-Gold Flash, 05-5μ", Custom plate available
- 9 Material-Resin: 1-PBT, 4-PA6T
- 10 Color-Resin: K6-Black
- 11 Packaging: K-Tray



THIRD ANGLE PROJECTION	GENERAL TOLERANCES (UNLESS SPECIFIED)		APPROVE BY	DATE	PART NO.	ITEM NO.	
	X.±.012(0.30)	.X'±5'	FRANK	20/AUG/13	FFH25441-DXXSXXXK6K	FFH25441	
DESIGN UNITS	X.X±.008(0.20)	.X'±2'	CHECKED BY	DATE	TITLE		REV 0 SHEET NO. 1/2
Inch (metric)	X.XX±.006(0.15)	.XX'±1'	CHERRY	20/AUG/13	Board to Board (Female Header) Pitch 2.54mm 180° Vertical (DIP)		
SCALE	X.XXX±.004(0.10)	.XXX'±0.5'	DRAWN BY	DATE	THIS DRAWING CONTAINS INFORMATION THAT IS PROPRIETARY TO DONG GUAN LANG LUN(3K-KAMING) ELECTRONIC PRODUCTS CO., LTD. AND SHOULD NOT BE USED WITHOUT WRITTEN PERMISSION		3K-KAMING
5:1			KEVIN	20/AUG/13			



REV	LOCATIONS	DESCRIPTION	DATE	REVISER	APPD

Circuits (n)	Part No.	Dimensions(in/mm)		Circuits (n)	Part No.	Dimensions(in/mm)	
		A	B			A	B
4	FFH25441-D04SXXXXK6K	.100(2.54)	.220(5.58)	44	FFH25441-D44SXXXXK6K	2.100(53.34)	2.220(56.38)
6	FFH25441-D06SXXXXK6K	.200(5.08)	.320(8.12)	46	FFH25441-D46SXXXXK6K	2.200(55.88)	2.320(58.92)
8	FFH25441-D08SXXXXK6K	.300(7.62)	.420(10.66)	48	FFH25441-D48SXXXXK6K	2.300(58.42)	2.420(61.46)
10	FFH25441-D10SXXXXK6K	.400(10.16)	.520(13.20)	50	FFH25441-D50SXXXXK6K	2.400(60.96)	2.520(64.00)
12	FFH25441-D12SXXXXK6K	.500(12.70)	.620(15.74)	52	FFH25441-D52SXXXXK6K	2.500(63.50)	2.620(66.54)
14	FFH25441-D14SXXXXK6K	.600(15.24)	.720(18.28)	54	FFH25441-D54SXXXXK6K	2.600(66.04)	2.720(69.08)
16	FFH25441-D16SXXXXK6K	.700(17.78)	.820(20.82)	56	FFH25441-D56SXXXXK6K	2.700(68.58)	2.820(71.62)
18	FFH25441-D18SXXXXK6K	.800(20.32)	.920(23.36)	58	FFH25441-D58SXXXXK6K	2.800(71.12)	2.920(74.16)
20	FFH25441-D20SXXXXK6K	.900(22.86)	1.020(25.90)	60	FFH25441-D60SXXXXK6K	2.900(73.66)	3.020(76.70)
22	FFH25441-D22SXXXXK6K	1.000(25.40)	1.120(28.44)	62	FFH25441-D62SXXXXK6K	3.000(76.20)	3.120(79.24)
24	FFH25441-D24SXXXXK6K	1.100(27.94)	1.220(30.98)	64	FFH25441-D64SXXXXK6K	3.100(78.74)	3.220(81.78)
26	FFH25441-D26SXXXXK6K	1.200(30.48)	1.320(33.52)	66	FFH25441-D66SXXXXK6K	3.200(81.28)	3.320(84.32)
28	FFH25441-D28SXXXXK6K	1.300(33.02)	1.420(36.06)	68	FFH25441-D68SXXXXK6K	3.300(83.82)	3.420(86.86)
30	FFH25441-D30SXXXXK6K	1.400(35.56)	1.520(38.60)	70	FFH25441-D70SXXXXK6K	3.400(86.36)	3.520(89.40)
32	FFH25441-D32SXXXXK6K	1.500(38.10)	1.620(41.14)	72	FFH25441-D72SXXXXK6K	3.500(88.90)	3.620(91.94)
34	FFH25441-D34SXXXXK6K	1.600(40.64)	1.720(43.68)	74	FFH25441-D74SXXXXK6K	3.600(91.44)	3.720(94.48)
36	FFH25441-D36SXXXXK6K	1.700(43.18)	1.820(46.22)	76	FFH25441-D76SXXXXK6K	3.700(93.98)	3.820(97.02)
38	FFH25441-D38SXXXXK6K	1.800(45.72)	1.920(48.76)	78	FFH25441-D78SXXXXK6K	3.800(96.52)	3.920(99.56)
40	FFH25441-D40SXXXXK6K	1.900(48.26)	2.020(51.30)	80	FFH25441-D80SXXXXK6K	3.900(99.06)	4.020(102.10)
42	FFH25441-D42SXXXXK6K	2.000(50.80)	2.120(53.84)				



 THIRD ANGLE PROJECTION	GENERAL TOLERANCES (UNLESS SPECIFIED)		APPROVE BY	DATE	PART NO.	ITEM NO.	 3K-KAMING
	X.±.012(0.30)	X.±5'	FRANK	20/AUG/13	FFH25441-DXXSXXXXK6K	FFH25441	
	X.X±.008(0.20)	.X'±2'	CHECKED BY	DATE	TITLE		
	X.XX±.006(0.15)	.XX'±1'	CHERRY	20/AUG/13	Board to Board (Female Header) Pitch 2.54mm 180° Vertical (DIP)	REV 0	
SCALE	SIZE	X.XXX±.004(0.10)	.XXX'±0.5'	DRAWN BY	DATE	THIS DRAWING CONTAINS INFORMATION THAT IS PROPRIETARY TO DONG GUAN LANG LUN(3K-KAMING) ELECTRONIC PRODUCTS CO.,LTD. AND SHOULD NOT BE USED WITHOUT WRITTEN PERMISSION	
5:1	A4			KEVIN	20/AUG/13		