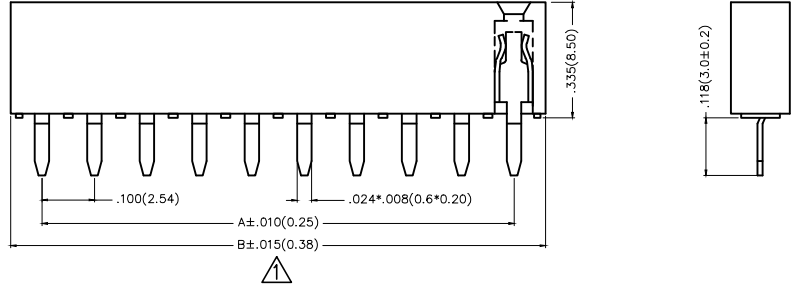
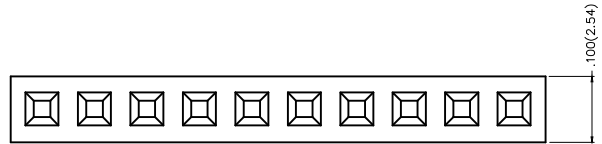


REV	LOCATIONS	DESCRIPTION	DATE	REVISER	APPD
1	△	Size change	28/MAY/18	KATE	FRANK



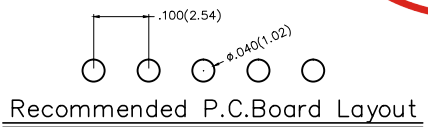
Electrical
 Current Rating: 3A AC(rms)/DC
 Voltage Rating: 250V AC(rms)/DC
 Contact Resistance: 20 mΩ Max
 Insulation Resistance: 1000 MΩ MIN
 Withstanding Voltage: 500V AC r.m.s
 Temperature Range—Operating: -40°C~+105°C
 Material and Plating
 Housing: PBT/PA6T(UL 94V-0)
 Contact Pin: Brass
 Plating: Gold Plated/Selective gold in contact area, tin on tail



Ordering Information

FFH 254 24 - S XX S X XX X K6 K
 1 2 3 4 5 6 7 8 9 10 11

1 <u>Category</u> FFH—Female Header	2 <u>Series Number</u> 254—Pitch 2.54mm	3 <u>Distinction No.</u> 24	4 <u>Row Option</u> S—Single row	5 <u>Circuits</u> XX	6 <u>Entry Angle</u> S—180° Vertical
7 <u>Plating</u> 1—Gold Plated 3—Selective gold in contact area, tin on tail	8 <u>Thickness of Plating</u> 00—Gold Flash 05—5μ" Custom plate available	9 <u>Material—Resin</u> 1—PBT 4—PA6T	10 <u>Color—Resin</u> K6—Black	11 <u>Packaging</u> K—Tray	



 THIRD ANGLE PROJECTION	GENERAL TOLERANCES (UNLESS SPECIFIED)		APPROVE BY FRANK	DATE 12/AUG/13	PART NO. FFH25424-SXXSXXXK6K	ITEM NO. FFH25424	 3K-KAMING®	
	DESIGN UNITS Inch (metric)	X.X±.012(0.30)	X.±5°	CHECKED BY CHERRY	DATE 12/AUG/13	TITLE Board to Board (Female Header) Pitch 2.54mm 180° Vertical (DIP)		REV 1
SCALE 5:1	SIZE A4	X.XX±.006(0.15)	.XX'±1°	DRAWN BY JACOB	DATE 12/AUG/13	THIS DRAWING CONTAINS INFORMATION THAT IS PROPRIETARY TO DONG GUAN LANG LUN(3K-KAMING) ELECTRONIC PRODUCTS CO.,LTD. AND SHOULD NOT BE USED WITHOUT WRITTEN PERMISSION		
		X.XXX±.004(0.10)	.XXX'±0.5°					

REV	LOCATIONS	DESCRIPTION	DATE	REVISER	APPD
1	△	Size change	28/MAY/18	KATE	FRANK



Circuits (n)	Part No.	Dimensions(in/mm)		Circuits (n)	Part No.	Dimensions(in/mm)	
		A	B △			A	B △
2	FFH25424-S02SXXXXK6K	.100(2.54)	.235(5.98)	22	FFH25424-S22SXXXXK6K	2.100(53.34)	2.235(56.78)
3	FFH25424-S03SXXXXK6K	.200(5.08)	.335(8.52)	23	FFH25424-S23SXXXXK6K	2.200(55.88)	2.335(59.32)
4	FFH25424-S04SXXXXK6K	.300(7.62)	.435(11.06)	24	FFH25424-S24SXXXXK6K	2.300(58.42)	2.435(61.86)
5	FFH25424-S05SXXXXK6K	.400(10.16)	.535(13.60)	25	FFH25424-S25SXXXXK6K	2.400(60.96)	2.535(64.40)
6	FFH25424-S06SXXXXK6K	.500(12.70)	.635(16.14)	26	FFH25424-S26SXXXXK6K	2.500(63.50)	2.635(66.94)
7	FFH25424-S07SXXXXK6K	.600(15.24)	.735(18.68)	27	FFH25424-S27SXXXXK6K	2.600(66.04)	2.735(69.48)
8	FFH25424-S08SXXXXK6K	.700(17.78)	.835(21.22)	28	FFH25424-S28SXXXXK6K	2.700(68.58)	2.835(72.02)
9	FFH25424-S09SXXXXK6K	.800(20.32)	.935(23.76)	29	FFH25424-S29SXXXXK6K	2.800(71.12)	2.935(74.56)
10	FFH25424-S10SXXXXK6K	.900(22.86)	1.035(26.30)	30	FFH25424-S30SXXXXK6K	2.900(73.66)	3.035(77.10)
11	FFH25424-S11SXXXXK6K	1.000(25.40)	1.135(28.84)	31	FFH25424-S31SXXXXK6K	3.000(76.20)	3.135(79.64)
12	FFH25424-S12SXXXXK6K	1.100(27.94)	1.235(31.38)	32	FFH25424-S32SXXXXK6K	3.100(78.74)	3.235(82.18)
13	FFH25424-S13SXXXXK6K	1.200(30.48)	1.335(33.92)	33	FFH25424-S33SXXXXK6K	3.200(81.28)	3.315(84.72)
14	FFH25424-S14SXXXXK6K	1.300(33.02)	1.435(36.46)	34	FFH25424-S34SXXXXK6K	3.300(83.82)	3.435(87.26)
15	FFH25424-S15SXXXXK6K	1.400(35.56)	1.535(39.00)	35	FFH25424-S35SXXXXK6K	3.400(86.36)	3.535(89.80)
16	FFH25424-S16SXXXXK6K	1.500(38.10)	1.635(41.54)	36	FFH25424-S36SXXXXK6K	3.500(88.90)	3.635(92.34)
17	FFH25424-S17SXXXXK6K	1.600(40.64)	1.735(44.08)	37	FFH25424-S37SXXXXK6K	3.600(91.44)	3.735(94.88)
18	FFH25424-S18SXXXXK6K	1.700(43.18)	1.835(46.62)	38	FFH25424-S38SXXXXK6K	3.700(93.98)	3.835(97.42)
19	FFH25424-S19SXXXXK6K	1.800(45.72)	1.935(49.16)	39	FFH25424-S39SXXXXK6K	3.800(96.52)	3.935(99.96)
20	FFH25424-S20SXXXXK6K	1.900(48.26)	2.035(51.70)	40	FFH25424-S40SXXXXK6K	3.900(99.06)	4.035(102.50)
21	FFH25424-S21SXXXXK6K	2.000(50.80)	2.135(54.24)				



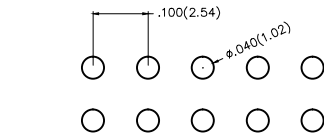
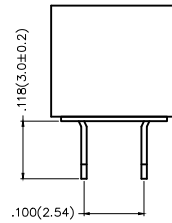
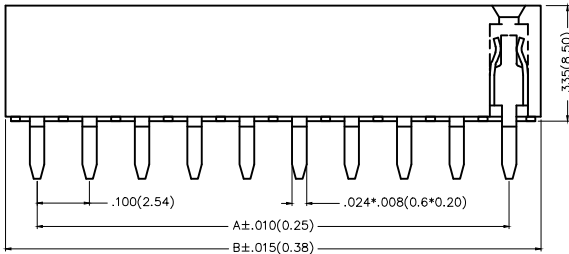
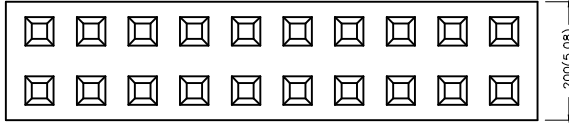
 THIRD ANGLE PROJECTION	GENERAL TOLERANCES (UNLESS SPECIFIED)		APPROVE BY FRANK	DATE 12/AUG/13	PART NO. FFH25424-SXXSXXXXK6K	ITEM NO. FFH25424	 3K-KAMING®
	X.±.012(0.30)	X.±5'	CHECKED BY CHERRY	DATE 12/AUG/13	TITLE Board to Board (Female Header) Pitch 2.54mm 180° Vertical (DIP)		
DESIGN UNITS Inch (metric)	X.X±.008(0.20)	.X'±2'	DRAWN BY JACOB	DATE 12/AUG/13	THIS DRAWING CONTAINS INFORMATION THAT IS PROPRIETARY TO DONG GUAN LANG LUN(3K-KAMING) ELECTRONIC PRODUCTS CO., LTD. AND SHOULD NOT BE USED WITHOUT WRITTEN PERMISSION		
SCALE 5:1	SIZE A4	X.XX±.006(0.15)	.XX'±1'				
		X.XXX±.004(0.10)	.XXX'±0.5'				

REV	LOCATIONS	DESCRIPTION	DATE	REVISER	APPD



Electrical
 Current Rating: 3A AC(rms)/DC
 Voltage Rating: 250V AC(rms)/DC
 Contact Resistance: 20 mΩ Max
 Insulation Resistance: 1000 MΩ MIN
 Withstanding Voltage: 500V AC r.m.s
 Temperature Range-Operating: -40°C~+105°C

Material and Plating
 Housing: PBT/PA6T(UL 94V-0)
 Contact Pin: Brass
 Plating: Gold Plated/Selective gold in contact area, tin on tail



Recommended P.C.Board Layout

Ordering Information

FFH 254 24 - D XX S X XX X K6 K
 1 2 3 4 5 6 7 8 9 10 11

1 Category FFH-Female Header	2 Series Number 254-Pitch2.54mm	3 Distinction No. 24	4 Row Option D-Double Row	5 Circuits XX	6 Entry Angle S-180° Vertical
7 Plating 1-Gold Plated 3-Selective gold in contact area, tin on tail	8 Thickness of Plating 00-Gold Flash 05-5μ" Custom plate available	9 Material-Resin 1-PBT 4-PA6T	10 Color-Resin K6-Black	11 Packaging K-Tray	

 THIRD ANGLE PROJECTION	GENERAL TOLERANCES (UNLESS SPECIFIED)		APPROVE BY FRANK	DATE 12/AUG/13	PART NO. FFH25424-DXXSXXXK6K	ITEM NO. FFH25424	 3K-KAMING®	
	DESIGN UNITS Inch (metric)	X.±.012(0.30) X.X±.008(0.20)	X.±5' .X±2'	CHECKED BY CHERRY	DATE 12/AUG/13	TITLE Board to Board (Female Header) Pitch 2.54mm 180° Vertical (DIP)		REV 0
SCALE 5:1	SIZE A4	X.XX±.006(0.15) X.XXX±.004(0.10)	.XX±1' .XXX±0.5'	DRAWN BY JACOB	DATE 12/AUG/13	THIS DRAWING CONTAINS INFORMATION THAT IS PROPRIETARY TO DONG GUAN LANG LUN(3K-KAMING) ELECTRONIC PRODUCTS CO.,LTD. AND SHOULD NOT BE USED WITHOUT WRITTEN PERMISSION		

REV	LOCATIONS	DESCRIPTION	DATE	REVISER	APPD



Circuits (n)	Part No.	Dimensions(in/mm)		Circuits (n)	Part No.	Dimensions(in/mm)	
		A	B			A	B
4	FFH25424-D04SXXXXK6K	.100(2.54)	.220(5.58)	44	FFH25424-D44S1XXXXK6K	2.100(53.34)	2.220(56.38)
6	FFH25424-D06SXXXXK6K	.200(5.08)	.320(8.12)	46	FFH25424-D46S1XXXXK6K	2.200(55.88)	2.320(58.92)
8	FFH25424-D08SXXXXK6K	.300(7.62)	.420(10.66)	48	FFH25424-D48S1XXXXK6K	2.300(58.42)	2.420(61.46)
10	FFH25424-D10SXXXXK6K	.400(10.16)	.520(13.20)	50	FFH25424-D50S1XXXXK6K	2.400(60.96)	2.520(64.00)
12	FFH25424-D12SXXXXK6K	.500(12.70)	.620(15.74)	52	FFH25424-D52S1XXXXK6K	2.500(63.50)	2.620(66.54)
14	FFH25424-D14SXXXXK6K	.600(15.24)	.720(18.28)	54	FFH25424-D54S1XXXXK6K	2.600(66.04)	2.720(69.08)
16	FFH25424-D16SXXXXK6K	.700(17.78)	.820(20.82)	56	FFH25424-D56S1XXXXK6K	2.700(68.58)	2.820(71.62)
18	FFH25424-D18SXXXXK6K	.800(20.32)	.920(23.36)	58	FFH25424-D58S1XXXXK6K	2.800(71.12)	2.920(74.16)
20	FFH25424-D20SXXXXK6K	.900(22.86)	1.020(25.90)	60	FFH25424-D60S1XXXXK6K	2.900(73.66)	3.020(76.70)
22	FFH25424-D22SXXXXK6K	1.000(25.40)	1.120(28.44)	62	FFH25424-D62S1XXXXK6K	3.000(76.20)	3.120(79.24)
24	FFH25424-D24SXXXXK6K	1.100(27.94)	1.220(30.98)	64	FFH25424-D64S1XXXXK6K	3.100(78.74)	3.220(81.78)
26	FFH25424-D26SXXXXK6K	1.200(30.48)	1.320(33.52)	66	FFH25424-D66S1XXXXK6K	3.200(81.28)	3.320(84.32)
28	FFH25424-D28SXXXXK6K	1.300(33.02)	1.420(36.06)	68	FFH25424-D68S1XXXXK6K	3.300(83.82)	3.420(86.86)
30	FFH25424-D30SXXXXK6K	1.400(35.56)	1.520(38.60)	70	FFH25424-D70S1XXXXK6K	3.400(86.36)	3.520(89.40)
32	FFH25424-D32SXXXXK6K	1.500(38.10)	1.620(41.14)	72	FFH25424-D72S1XXXXK6K	3.500(88.90)	3.620(91.94)
34	FFH25424-D34SXXXXK6K	1.600(40.64)	1.720(43.68)	74	FFH25424-D74S1XXXXK6K	3.600(91.44)	3.720(94.48)
36	FFH25424-D36S1XXXXK6K	1.700(43.18)	1.820(46.22)	76	FFH25424-D76S1XXXXK6K	3.700(93.98)	3.820(97.02)
38	FFH25424-D38S1XXXXK6K	1.800(45.72)	1.920(48.76)	78	FFH25424-D78S1XXXXK6K	3.800(96.52)	3.920(99.56)
40	FFH25424-D40S1XXXXK6K	1.900(48.26)	2.020(51.30)	80	FFH25424-D80S1XXXXK6K	3.900(99.06)	4.020(102.10)
42	FFH25424-D42S1XXXXK6K	2.000(50.80)	2.120(53.84)				



 THIRD ANGLE PROJECTION	GENERAL TOLERANCES (UNLESS SPECIFIED)		APPROVE BY FRANK	DATE 12/AUG/13	PART NO. FFH25424-DXXSXXXXK6K	ITEM NO. FFH25424	 3K-KAMING® REV 0 SHEET NO. 2/2	
	DESIGN UNITS Inch (metric)	X.±.012(0.30)	X.±5'	CHECKED BY CHERRY	DATE 12/AUG/13	TITLE Board to Board (Female Header) Pitch 2.54mm 180° Vertical (DIP)		
		SCALE 5:1	SIZE A4	X.XX±.006(0.15)	.XX±1'	DRAWN BY JACOB		DATE 12/AUG/13