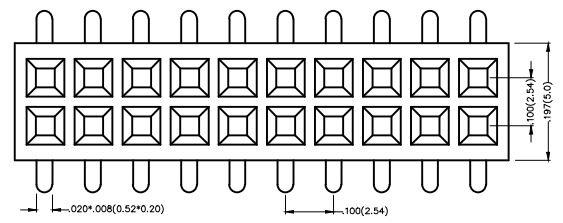


REV	LOCATIONS	DESCRIPTION	DATE



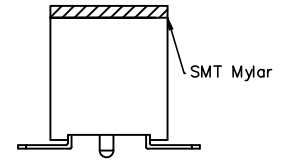
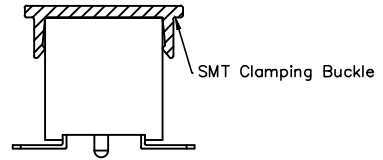
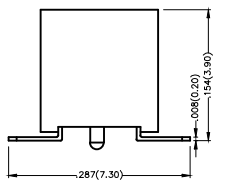
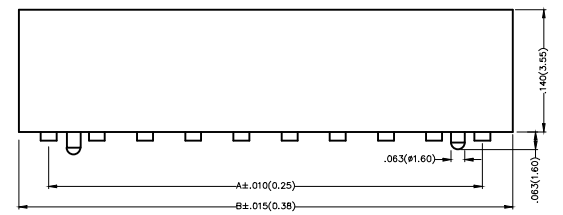
Electrical  
 Current Rating: 3A AC(rms)/DC  
 Voltage Rating: 250V AC(rms)/DC  
 Contact Resistance: 20 mΩ Max  
 Insulation Resistance: 1000 MΩ MIN  
 Withstanding Voltage: 500V AC r.m.s  
 Temperature Range-Operating: -40°C~+105°C

Material and Plating  
 Housing: PBT/PA6T( UL 94V-0)  
 Contact Pin: Phosphor Bronze  
 Plating: Gold Plated/Selective gold in contact area, matte(bright) tin on tail



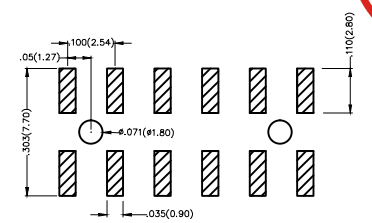
Packing: M-Reel(With Cap)

Packing: M1-Reel(With Mylar)



Ordering Information

FFH 254 16 - D XX S X XX X K6 XX  
 1 2 3 4 5 6 7 8 9 10 11



Recommended P.C.Board Layout

1 Category FFH-Female Header	2 Series Number 254-Pitch2.54mm	3 Distinction No. 16	4 Row Option D-Double Row	5 Circuits XX	6 Entry Angle S-180° Vertical
7 Plating 1-Gold Plated 3-Selective gold in contact area, matte(bright) tin on tail	8 Thickness of Plating 00-Gold Flash 05-5μ Custom plate available	9 Material-Resin 1-PBT 4-PA6T	10 Color-Resin K6-Black	11 Packaging M-Reel(With Cap) M1-Reel(With Mylar)	

 THIRD ANGLE PROJECTION	GENERAL TOLERANCES (UNLESS SPECIFIED)		APPROVE BY FRANK	DATE 12/AUG/13	PART NO. FFH25416-XXXSXXXK6XX	ITEM NO. FFH25416	 3K-KAMING
	X.±.012(0.30)	X.±5'	CHECKED BY CHERRY	DATE 12/AUG/13	TITLE Board to Board (Female Header) Pitch 2.54mm 180° Vertical (SMT)		
DESIGN UNITS Inch (metric)	X.X±.008(0.20)	.X'±2'	DRAWN BY JACOB		THIS DRAWING CONTAINS INFORMATION THAT IS PROPRIETARY TO DONG GUAN LANG LUN(3K-KAMING) ELECTRONIC PRODUCTS CO.,LTD. AND SHOULD NOT BE USED WITHOUT WRITTEN PERMISSION		
SCALE 5:1	SIZE A4	X.XX±.006(0.15)	X.XX'±1'	DATE 12/AUG/13			
		X.XXX±.004(0.10)	.XXX'±0.5'				

REV	LOCATIONS	DESCRIPTION	DATE



Circuits (n)	Part No.	Dimensions(in/mm)		Circuits (n)	Part No.	Dimensions(in/mm)	
		A	B			A	B
4	FFH25416-D04SXXXXK6M	.100(2.54)	.220(5.58)	44	FFH25416-D44SXXXXK6M	2.100(53.34)	2.220(56.38)
6	FFH25416-D06SXXXXK6M	.200(5.08)	.320(8.12)	46	FFH25416-D46SXXXXK6M	2.200(55.88)	2.320(58.92)
8	FFH25416-D08SXXXXK6M	.300(7.62)	.420(10.66)	48	FFH25416-D48SXXXXK6M	2.300(58.42)	2.420(61.46)
10	FFH25416-D10SXXXXK6M	.400(10.16)	.520(13.20)	50	FFH25416-D50SXXXXK6M	2.400(60.96)	2.520(64.00)
12	FFH25416-D12SXXXXK6M	.500(12.70)	.620(15.74)	52	FFH25416-D52SXXXXK6M	2.500(63.50)	2.620(66.54)
14	FFH25416-D14SXXXXK6M	.600(15.24)	.720(18.28)	54	FFH25416-D54SXXXXK6M	2.600(66.04)	2.720(69.08)
16	FFH25416-D16SXXXXK6M	.700(17.78)	.820(20.82)	56	FFH25416-D56SXXXXK6M	2.700(68.58)	2.820(71.62)
18	FFH25416-D18SXXXXK6M	.800(20.32)	.920(23.36)	58	FFH25416-D58SXXXXK6M	2.800(71.12)	2.920(74.16)
20	FFH25416-D20SXXXXK6M	.900(22.86)	1.020(25.90)	60	FFH25416-D60SXXXXK6M	2.900(73.66)	3.020(76.70)
22	FFH25416-D22SXXXXK6M	1.000(25.40)	1.120(28.44)	62	FFH25416-D62SXXXXK6M	3.000(76.20)	3.120(79.24)
24	FFH25416-D24SXXXXK6M	1.100(27.94)	1.220(30.98)	64	FFH25416-D64SXXXXK6M	3.100(78.74)	3.220(81.78)
26	FFH25416-D26SXXXXK6M	1.200(30.48)	1.320(33.52)	66	FFH25416-D66SXXXXK6M	3.200(81.28)	3.320(84.32)
28	FFH25416-D28SXXXXK6M	1.300(33.02)	1.420(36.06)	68	FFH25416-D68SXXXXK6M	3.300(83.82)	3.420(86.86)
30	FFH25416-D30SXXXXK6M	1.400(35.56)	1.520(38.60)	70	FFH25416-D70SXXXXK6M	3.400(86.36)	3.520(89.40)
32	FFH25416-D32SXXXXK6M	1.500(38.10)	1.620(41.14)	72	FFH25416-D72SXXXXK6M	3.500(88.90)	3.620(91.94)
34	FFH25416-D34SXXXXK6M	1.600(40.64)	1.720(43.68)	74	FFH25416-D74SXXXXK6M	3.600(91.44)	3.720(94.48)
36	FFH25416-D36SXXXXK6M	1.700(43.18)	1.820(46.22)	76	FFH25416-D76SXXXXK6M	3.700(93.98)	3.820(97.02)
38	FFH25416-D38SXXXXK6M	1.800(45.72)	1.920(48.76)	78	FFH25416-D78SXXXXK6M	3.800(96.52)	3.920(99.56)
40	FFH25416-D40SXXXXK6M	1.900(48.26)	2.020(51.30)	80	FFH25416-D80SXXXXK6M	3.900(99.06)	4.020(102.10)
42	FFH25416-D42SXXXXK6M	2.000(50.80)	2.120(53.84)				



 THIRD ANGLE PROJECTION	GENERAL TOLERANCES (UNLESS SPECIFIED)		APPROVE BY FRANK	DATE 12/AUG/13	PART NO. FFH25416-XXXSXXXXK6XX	ITEM NO. FFH25416	 3K-KAMING	
	DESIGN UNITS Inch (metric)	X.±.012(0.30)	X.±5'	CHECKED BY CHERRY	DATE 12/AUG/13	TITLE Board to Board (Female Header) Pitch 2.54mm 180° Vertical (SMT)		REV 0
SCALE 5:1	SIZE A4	X.XX±.006(0.15)	.XX±1'	DRAWN BY JACOB	DATE 12/AUG/13	THIS DRAWING CONTAINS INFORMATION THAT IS PROPRIETARY TO DONG GUAN LANG LUN(3K-KAMING) ELECTRONIC PRODUCTS CO.,LTD. AND SHOULD NOT BE USED WITHOUT WRITTEN PERMISSION		