

1 2 3 4 5 6 7 8

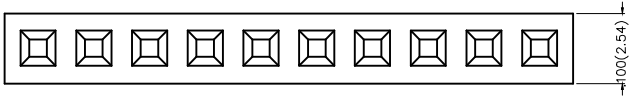
REV	LOCATIONS	DESCRIPTION	DATE	REVISER	APPD

A

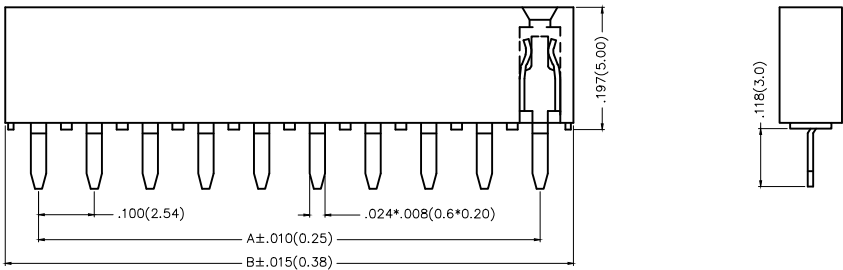


Electrical  
 Current Rating: 3A AC(rms)/DC  
 Voltage Rating: 250V AC(rms)/DC  
 Contact Resistance: 20 mΩ Max  
 Insulation Resistance: 1000 MΩ MIN  
 Withstanding Voltage: 500V AC r.m.s  
 Temperature Range—Operating: -40°C ~ +105°C  
 Material and Plating  
 Housing: PBT/PA6T( UL 94V-0)  
 Contact Pin: Brass  
 Plating: Gold Plated/Selective gold in contact area, tin on tail

B



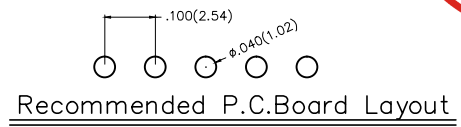
C



D



Ordering Information  
 FFH 254 10 - S XX S X XX X K6 K  
 1 2 3 4 5 6 7 8 9 10 11  
 1 Category: FFH-Female Header  
 2 Series Number: 254-Pitch2.54mm  
 3 Distinction No.: 10  
 4 Row Option: S-Single row  
 5 Circuits: XX  
 6 Entry Angle: S-180° Vertical  
 7 Plating: 1-Gold Plated, 3-Selective gold in contact area, tin on tail  
 8 Thickness of Plating: 00-Gold Flash, 05-5μ", Custom plate available  
 9 Material-Resin: 1-PBT, 4-PA6T  
 10 Color-Resin: K6-Black  
 11 Packaging: K-Tray



E

F

 THIRD ANGLE PROJECTION	GENERAL TOLERANCES (UNLESS SPECIFIED)		APPROVE BY FRANK	DATE 12/AUG/13	PART NO. FFH25410-SXXSXXXK6K	ITEM NO. FFH25410	 3K-KAMING	
	X.±.012(0.30)	X.'±5'	CHECKED BY CHERRY	DATE 12/AUG/13	TITLE Board to Board (Female Header) Pitch 2.54mm 180° Vertical (DIP)			REV 0
	DESIGN UNITS Inch (metric)	X.X±.008(0.20)	X.'±2'	DRAWN BY JACOB	DATE 12/AUG/13	THIS DRAWING CONTAINS INFORMATION THAT IS PROPRIETARY TO DONG GUAN LANG LUN(3K-KAMING) ELECTRONIC PRODUCTS CO., LTD. AND SHOULD NOT BE USED WITHOUT WRITTEN PERMISSION		
	SCALE 5:1	SIZE A4	X.XX±.006(0.15)	X.'±1'	X.XXX±.004(0.10)	X.'±0.5'		

1 2 3 4 5 6 7 8



REV	LOCATIONS	DESCRIPTION	DATE	REVISER	APPD

Circuits (n)	Part No.	Dimensions(in/mm)		Circuits (n)	Part No.	Dimensions(in/mm)	
		A	B			A	B
2	FFH25410-S02SXXXXK6K	.100(2.54)	.220(5.58)	22	FFH25410-S22SXXXXK6K	2.100(53.34)	2.220(56.38)
3	FFH25410-S03SXXXXK6K	.200(5.08)	.320(8.12)	23	FFH25410-S23SXXXXK6K	2.200(55.88)	2.320(58.92)
4	FFH25410-S04SXXXXK6K	.300(7.62)	.420(10.66)	24	FFH25410-S24SXXXXK6K	2.300(58.42)	2.420(61.46)
5	FFH25410-S05SXXXXK6K	.400(10.16)	.520(13.20)	25	FFH25410-S25SXXXXK6K	2.400(60.96)	2.520(64.00)
6	FFH25410-S06SXXXXK6K	.500(12.70)	.620(15.74)	26	FFH25410-S26SXXXXK6K	2.500(63.50)	2.620(66.54)
7	FFH25410-S07SXXXXK6K	.600(15.24)	.720(18.28)	27	FFH25410-S27SXXXXK6K	2.600(66.04)	2.720(69.08)
8	FFH25410-S08SXXXXK6K	.700(17.78)	.820(20.82)	28	FFH25410-S28SXXXXK6K	2.700(68.58)	2.820(71.62)
9	FFH25410-S09SXXXXK6K	.800(20.32)	.920(23.36)	29	FFH25410-S29SXXXXK6K	2.800(71.12)	2.920(74.16)
10	FFH25410-S10SXXXXK6K	.900(22.86)	1.020(25.90)	30	FFH25410-S30SXXXXK6K	2.900(73.66)	3.020(76.70)
11	FFH25410-S11SXXXXK6K	1.000(25.40)	1.120(28.44)	31	FFH25410-S31SXXXXK6K	3.000(76.20)	3.120(79.24)
12	FFH25410-S12SXXXXK6K	1.100(27.94)	1.220(30.98)	32	FFH25410-S32SXXXXK6K	3.100(78.74)	3.220(81.78)
13	FFH25410-S13SXXXXK6K	1.200(30.48)	1.320(33.52)	33	FFH25410-S33SXXXXK6K	3.200(81.28)	3.320(84.32)
14	FFH25410-S14SXXXXK6K	1.300(33.02)	1.420(36.06)	34	FFH25410-S34SXXXXK6K	3.300(83.82)	3.420(86.86)
15	FFH25410-S15SXXXXK6K	1.400(35.56)	1.520(38.60)	35	FFH25410-S35SXXXXK6K	3.400(86.36)	3.520(89.40)
16	FFH25410-S16SXXXXK6K	1.500(38.10)	1.620(41.14)	36	FFH25410-S36SXXXXK6K	3.500(88.90)	3.620(91.94)
17	FFH25410-S17SXXXXK6K	1.600(40.64)	1.720(43.68)	37	FFH25410-S37SXXXXK6K	3.600(91.44)	3.720(94.48)
18	FFH25410-S18SXXXXK6K	1.700(43.18)	1.820(46.22)	38	FFH25410-S38SXXXXK6K	3.700(93.98)	3.820(97.02)
19	FFH25410-S19SXXXXK6K	1.800(45.72)	1.920(48.76)	39	FFH25410-S39SXXXXK6K	3.800(96.52)	3.920(99.56)
20	FFH25410-S20SXXXXK6K	1.900(48.26)	2.020(51.30)	40	FFH25410-S40SXXXXK6K	3.900(99.06)	4.020(102.10)
21	FFH25410-S21SXXXXK6K	2.000(50.80)	2.120(53.84)				



 THIRD ANGLE PROJECTION	GENERAL TOLERANCES (UNLESS SPECIFIED)		APPROVE BY FRANK	DATE 12/AUG/13	PART NO. FFH25410-SXXSXXXXK6K	ITEM NO. FFH25410	 3K-KAMING	
	DESIGN UNITS Inch (metric)	X.±.012(0.30)	.X'±5'	CHECKED BY CHERRY	DATE 12/AUG/13	TITLE Board to Board (Female Header) Pitch 2.54mm 180° Vertical (DIP)		
		SCALE 5:1	SIZE A4	X.XX±.008(0.20)	.X'±2'	DRAWN BY JACOB		DATE 12/AUG/13

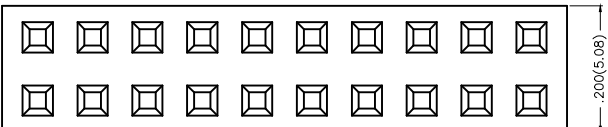
REV 0 SHEET NO. 2/2

1 2 3 4 5 6 7 8

REV	LOCATIONS	DESCRIPTION	DATE	REVISER	APPD

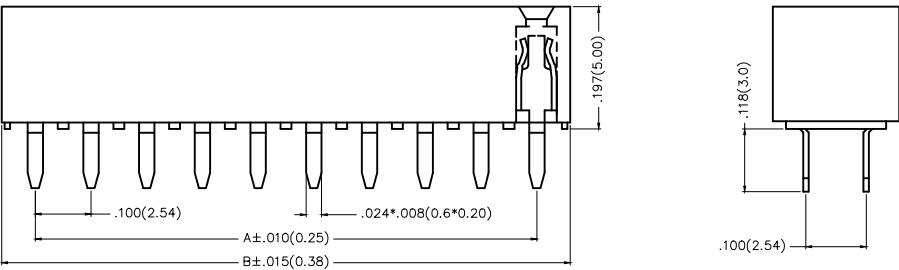
A

B



Electrical  
 Current Rating: 3A AC(rms)/DC  
 Voltage Rating: 250V AC(rms)/DC  
 Contact Resistance: 20 mΩ Max  
 Insulation Resistance: 1000 MΩ MIN  
 Withstanding Voltage: 500V AC r.m.s  
 Temperature Range-Operating: -40°C~+105°C  
 Material and Plating  
 Housing: PBT/PA6T( UL 94V-0)  
 Contact Pin: Brass  
 Plating: Gold Plated/Selective gold in contact area, tin on tail

C



D

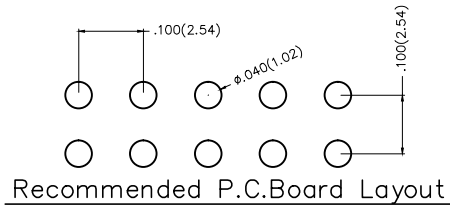


Ordering Information

FFH 254 10 - D XX S X XX X K6 K  
 1 2 3 4 5 6 7 8 9 10 11

1 Category FFH-Female Header	2 Series Number 254-Pitch2.54mm	3 Distinction No. 10	4 Row Option D-Double Row	5 Circuits XX	6 Entry Angle S-180° Vertical
7 Plating 1-Gold Plated 3-Selective gold in contact area, tin on tail	8 Thickness of Plating 00-Gold Flash 05-5μ" Custom plate available	9 Material-Resin 1-PBT 4-PA6T	10 Color-Resin K6-Black	11 Packaging K-Tray	

E



F

 THIRD ANGLE PROJECTION	GENERAL TOLERANCES (UNLESS SPECIFIED)		APPROVE BY FRANK	DATE 12/AUG/13	PART NO. FFH25410-DXXSXXXK6K	ITEM NO. FFH25410	 3K-KAMING®		
	X.±.012(0.30)	X.'±5'	CHECKED BY CHERRY	DATE 12/AUG/13	TITLE Board to Board (Female Header) Pitch 2.54mm 180° Vertical (DIP)			REV 0	SHEET NO. 1/2
	DESIGN UNITS Inch (metric)	X.X±.008(0.20)	X.'±2'	DRAWN BY JACOB	DATE 12/AUG/13	THIS DRAWING CONTAINS INFORMATION THAT IS PROPRIETARY TO DONG GUAN LANG LUN(3K-KAMING) ELECTRONIC PRODUCTS CO.,LTD. AND SHOULD NOT BE USED WITHOUT WRITTEN PERMISSON			
SCALE 5:1	SIZE A4	X.XX±.006(0.15)	X.'±1'						
		X.XXX±.004(0.10)	X.'±0.5'						

1 2 3 4 5 6 7 8



REV	LOCATIONS	DESCRIPTION	DATE	REVISER	APPD

Circuits (n)	Part No.	Dimensions(in/mm)		Circuits (n)	Part No.	Dimensions(in/mm)	
		A	B			A	B
4	FFH25410-D04SXXXXK6K	.100(2.54)	.220(5.58)	44	FFH25410-D44S1XXXXK6K	2.100(53.34)	2.220(56.38)
6	FFH25410-D06SXXXXK6K	.200(5.08)	.320(8.12)	46	FFH25410-D46S1XXXXK6K	2.200(55.88)	2.320(58.92)
8	FFH25410-D08SXXXXK6K	.300(7.62)	.420(10.66)	48	FFH25410-D48S1XXXXK6K	2.300(58.42)	2.420(61.46)
10	FFH25410-D10SXXXXK6K	.400(10.16)	.520(13.20)	50	FFH25410-D50S1XXXXK6K	2.400(60.96)	2.520(64.00)
12	FFH25410-D12SXXXXK6K	.500(12.70)	.620(15.74)	52	FFH25410-D52S1XXXXK6K	2.500(63.50)	2.620(66.54)
14	FFH25410-D14SXXXXK6K	.600(15.24)	.720(18.28)	54	FFH25410-D54S1XXXXK6K	2.600(66.04)	2.720(69.08)
16	FFH25410-D16SXXXXK6K	.700(17.78)	.820(20.82)	56	FFH25410-D56S1XXXXK6K	2.700(68.58)	2.820(71.62)
18	FFH25410-D18SXXXXK6K	.800(20.32)	.920(23.36)	58	FFH25410-D58S1XXXXK6K	2.800(71.12)	2.920(74.16)
20	FFH25410-D20SXXXXK6K	.900(22.86)	1.020(25.90)	60	FFH25410-D60S1XXXXK6K	2.900(73.66)	3.020(76.70)
22	FFH25410-D22SXXXXK6K	1.000(25.40)	1.120(28.44)	62	FFH25410-D62S1XXXXK6K	3.000(76.20)	3.120(79.24)
24	FFH25410-D24SXXXXK6K	1.100(27.94)	1.220(30.98)	64	FFH25410-D64S1XXXXK6K	3.100(78.74)	3.220(81.78)
26	FFH25410-D26SXXXXK6K	1.200(30.48)	1.320(33.52)	66	FFH25410-D66S1XXXXK6K	3.200(81.28)	3.320(84.32)
28	FFH25410-D28SXXXXK6K	1.300(33.02)	1.420(36.06)	68	FFH25410-D68S1XXXXK6K	3.300(83.82)	3.420(86.86)
30	FFH25410-D30SXXXXK6K	1.400(35.56)	1.520(38.60)	70	FFH25410-D70S1XXXXK6K	3.400(86.36)	3.520(89.40)
32	FFH25410-D32SXXXXK6K	1.500(38.10)	1.620(41.14)	72	FFH25410-D72S1XXXXK6K	3.500(88.90)	3.620(91.94)
34	FFH25410-D34SXXXXK6K	1.600(40.64)	1.720(43.68)	74	FFH25410-D74S1XXXXK6K	3.600(91.44)	3.720(94.48)
36	FFH25410-D36S1XXXXK6K	1.700(43.18)	1.820(46.22)	76	FFH25410-D76S1XXXXK6K	3.700(93.98)	3.820(97.02)
38	FFH25410-D38S1XXXXK6K	1.800(45.72)	1.920(48.76)	78	FFH25410-D78S1XXXXK6K	3.800(96.52)	3.920(99.56)
40	FFH25410-D40S1XXXXK6K	1.900(48.26)	2.020(51.30)	80	FFH25410-D80S1XXXXK6K	3.900(99.06)	4.020(102.10)
42	FFH25410-D42S1XXXXK6K	2.000(50.80)	2.120(53.84)				



 THIRD ANGLE PROJECTION	GENERAL TOLERANCES (UNLESS SPECIFIED)		APPROVE BY FRANK	DATE 12/AUG/13	PART NO. FFH25410-DXXSXXXXK6K	ITEM NO. FFH25410	 3K-KAMING	
	DESIGN UNITS Inch (metric)	X.±.012(0.30)	X.±5'	CHECKED BY CHERRY	DATE 12/AUG/13	TITLE Board to Board (Female Header) Pitch 2.54mm 180° Vertical (DIP)		REV 0
SCALE 5:1	SIZE A4	X.XX±.006(0.15)	.XX±1'	DRAWN BY JACOB	DATE 12/AUG/13	THIS DRAWING CONTAINS INFORMATION THAT IS PROPRIETARY TO DONG GUAN LANG LUN(3K-KAMING) ELECTRONIC PRODUCTS CO.,LTD. AND SHOULD NOT BE USED WITHOUT WRITTEN PERMISSION		