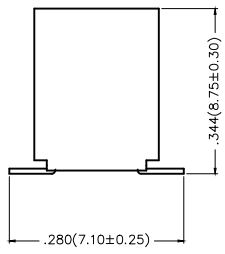
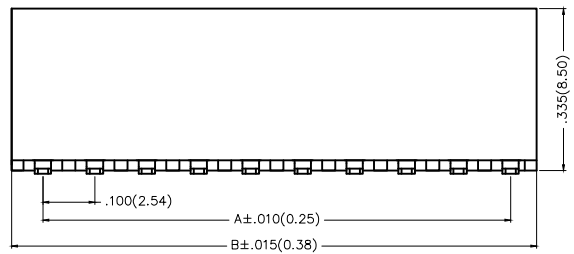
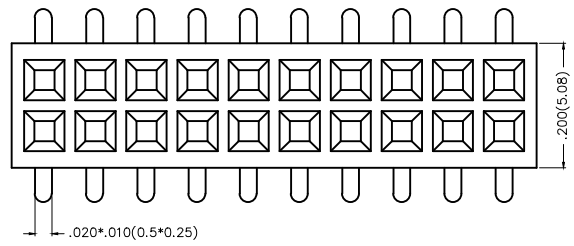


1 2 3 4 5 6 7 8

REV	LOCATIONS	DESCRIPTION	DATE

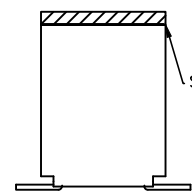
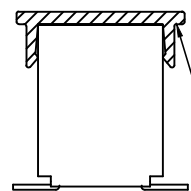


Electrical  
 Current Rating: 3A AC(rms)/DC  
 Voltage Rating: 250V AC(rms)/DC  
 Contact Resistance: 20 mΩ Max  
 Insulation Resistance: 1000 MΩ MIN  
 Withstanding Voltage: 500V AC r.m.s  
 Temperature Range-Operating: -40°C~+105°C  
 Material and Plating  
 Housing: PA6T( UL 94V-0)  
 Contact Pin: Brass  
 Plating: Gold Plated/Selective gold in contact area, matte(bright) tin on tail



Packing: M-Reel(With Cap)

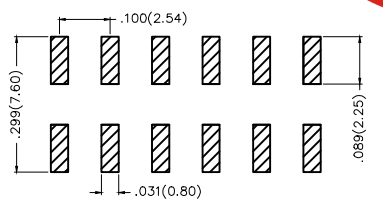
Packing: M1-Reel(With Mylar)



Ordering Information

FFH 254 08 — D XX S X XX 4 K6 XX  
 1 2 3 4 5 6 7 8 9 10 11

1 Category FFH-Female Header	2 Series Number 254-Pitch2.54mm	3 Distinction No. 08	4 Row Option D-Double Row	5 Circuits XX	6 Extra Angle 180°
7 Plating 1-Gold Plated 3-Selective gold in contact area, tin on tail	8 Thickness of Plating 00-Gold Flash 01-1μ" 05-5μ" Custom plate available	9 Material-Resin 4-PA6T	10 Color-Resin K6-Black	11 Packaging M-Reel(With Cap) M1-Reel(With Mylar)	



Recommended P.C.Board Layout

THIRD ANGLE PROJECTION	GENERAL TOLERANCES (UNLESS SPECIFIED)		APPROVE BY FRANK	DATE 12/AUG/13	PART NO. FFH25408-DXXSXX4K6XX	ITEM NO. FFH25408	
	DESIGN UNITS Inch (metric)	X.±.012(0.30) X.X±.008(0.20) X.XX±.006(0.15) X.XXX±.004(0.10)	X.'±5' .X'±2' .XX'±1' .XXX'±0.5'	CHECKED BY CHERRY	DATE 12/AUG/13	TITLE Board to Board (Female Header) Pitch 2.54mm 180° Vertical (SMT)	
SCALE 5:1	SIZE A4	DRAWN BY JACOB		DATE 12/AUG/13	THIS DRAWING CONTAINS INFORMATION THAT IS PROPRIETARY TO DONG GUAN LANG LUN(3K-KAMING) ELECTRONIC PRODUCTS CO.,LTD. AND SHOULD NOT BE USED WITHOUT WRITTEN PERMISSION		

1 2 3 4 5 6 7 8



REV	LOCATIONS	DESCRIPTION	DATE

Circuits (n)	Part No.	Dimensions(in/mm)		Circuits (n)	Part No.	Dimensions(in/mm)	
		A	B			A	B
4	FFH25408-D04SXXX4K6XX	.100(2.54)	.220(5.58)	44	FFH25408-D44SXXX4K6XX	2.100(53.34)	2.220(56.38)
6	FFH25408-D06SXXX4K6XX	.200(5.08)	.320(8.12)	46	FFH25408-D46SXXX4K6XX	2.200(55.88)	2.320(58.92)
8	FFH25408-D08SXXX4K6XX	.300(7.62)	.420(10.66)	48	FFH25408-D48SXXX4K6XX	2.300(58.42)	2.420(61.46)
10	FFH25408-D10SXXX4K6XX	.400(10.16)	.520(13.20)	50	FFH25408-D50SXXX4K6XX	2.400(60.96)	2.520(64.00)
12	FFH25408-D12SXXX4K6XX	.500(12.70)	.620(15.74)	52	FFH25408-D52SXXX4K6XX	2.500(63.50)	2.620(66.54)
14	FFH25408-D14SXXX4K6XX	.600(15.24)	.720(18.28)	54	FFH25408-D54SXXX4K6XX	2.600(66.04)	2.720(69.08)
16	FFH25408-D16SXXX4K6XX	.700(17.78)	.820(20.82)	56	FFH25408-D56SXXX4K6XX	2.700(68.58)	2.820(71.62)
18	FFH25408-D18SXXX4K6XX	.800(20.32)	.920(23.36)	58	FFH25408-D58SXXX4K6XX	2.800(71.12)	2.920(74.16)
20	FFH25408-D20SXXX4K6XX	.900(22.86)	1.020(25.90)	60	FFH25408-D60SXXX4K6XX	2.900(73.66)	3.020(76.70)
22	FFH25408-D22SXXX4K6XX	1.000(25.40)	1.120(28.44)	62	FFH25408-D62SXXX4K6XX	3.000(76.20)	3.120(79.24)
24	FFH25408-D24SXXX4K6XX	1.100(27.94)	1.220(30.98)	64	FFH25408-D64SXXX4K6XX	3.100(78.74)	3.220(81.78)
26	FFH25408-D26SXXX4K6XX	1.200(30.48)	1.320(33.52)	66	FFH25408-D66SXXX4K6XX	3.200(81.28)	3.320(84.32)
28	FFH25408-D28SXXX4K6XX	1.300(33.02)	1.420(36.06)	68	FFH25408-D68SXXX4K6XX	3.300(83.82)	3.420(86.86)
30	FFH25408-D30SXXX4K6XX	1.400(35.56)	1.520(38.60)	70	FFH25408-D70SXXX4K6XX	3.400(86.36)	3.520(89.40)
32	FFH25408-D32SXXX4K6XX	1.500(38.10)	1.620(41.14)	72	FFH25408-D72SXXX4K6XX	3.500(88.90)	3.620(91.94)
34	FFH25408-D34SXXX4K6XX	1.600(40.64)	1.720(43.68)	74	FFH25408-D74SXXX4K6XX	3.600(91.44)	3.720(94.48)
36	FFH25408-D36SXXX4K6XX	1.700(43.18)	1.820(46.22)	76	FFH25408-D76SXXX4K6XX	3.700(93.98)	3.820(97.02)
38	FFH25408-D38SXXX4K6XX	1.800(45.72)	1.920(48.76)	78	FFH25408-D78SXXX4K6XX	3.800(96.52)	3.920(99.56)
40	FFH25408-D40SXXX4K6XX	1.900(48.26)	2.020(51.30)	80	FFH25408-D80SXXX4K6XX	3.900(99.06)	4.020(102.10)
42	FFH25408-D42SXXX4K6XX	2.000(50.80)	2.120(53.84)				



 THIRD ANGLE PROJECTION	GENERAL TOLERANCES (UNLESS SPECIFIED)		APPROVE BY FRANK	DATE 12/AUG/13	PART NO. FFH25408-DXXSXXX4K6XX	ITEM NO. FFH25408	 3K-KAMING	
	X.±.012(0.30)	X.±5'	CHECKED BY CHERRY	DATE 12/AUG/13	TITLE Board to Board (Female Header) Pitch 2.54mm 180° Vertical (SMT)			REV 1
	DESIGN UNITS Inch (metric)	X.X±.008(0.20)	.X'±2'	DRAWN BY JACOB	DATE 12/AUG/13	THIS DRAWING CONTAINS INFORMATION THAT IS PROPRIETARY TO DONG GUAN LANG LUN(3K-KAMING) ELECTRONIC PRODUCTS CO.,LTD. AND SHOULD NOT BE USED WITHOUT WRITTEN PERMISSION		
	SCALE 5:1	SIZE A4	X.XX±.006(0.15)	.XX±1'	X.XXX±.004(0.10)	.XXX±0.5'		

1 2 3 4 5 6 7 8

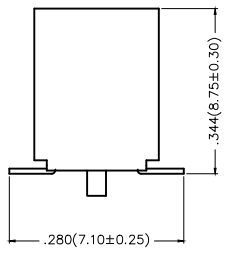
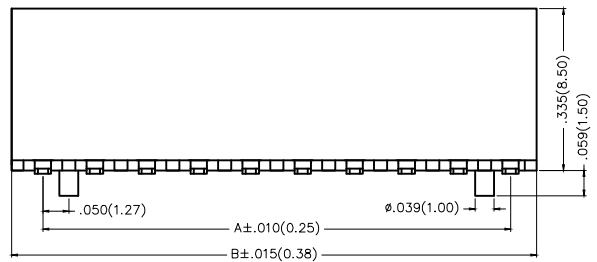
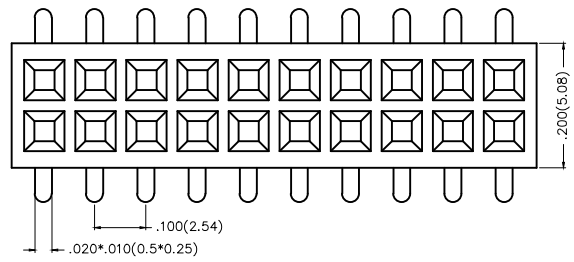
REV	LOCATIONS	DESCRIPTION	DATE



Electrical  
 Current Rating: 3A AC(rms)/DC  
 Voltage Rating: 250V AC(rms)/DC  
 Contact Resistance: 20 mΩ Max  
 Insulation Resistance: 1000 MΩ MIN  
 Withstanding Voltage: 500V AC r.m.s  
 Temperature Range-Operating: -40°C~+105°C  
 Material and Plating  
 Housing: PA6T( UL 94V-0)  
 Contact Pin: Brass  
 Plating: Gold Plated/Selective gold in contact area, matte(bright) tin on tail

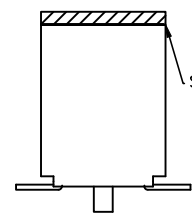
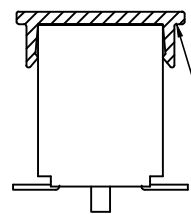
A  
B  
C  
D  
E  
F

A  
B  
C  
D  
E  
F



Packing: M-Reel(With Cap)

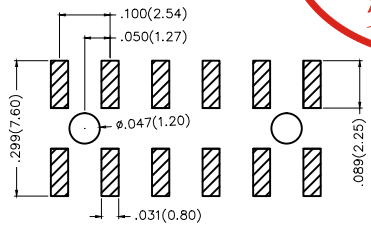
Packing: M1-Reel(With Mylar)



Ordering Information

FFH 254 08 — D XX S X XX 4 K6 XX A  
 1 2 3 4 5 6 7 8 9 10 11 12

1 Category FFH-Female Header	2 Series Number 254-Pitch 2.54mm	3 Distinction No. 08	4 Row Option D-Double Row	5 Circuits XX	6 Entry Angle S-180° Vertical
7 Plating 1-Gold Plated 3-Selective gold in contact area, tin on tail	8 Thickness of Plating 00-Gold Flash 01-1μ" 05-5μ" Custom plate available	9 Material-Resin 4-PA6T	10 Color-Resin K6-Black	11 Packaging M-Reel(With Cap) M1-Reel(With Mylar)	12 Type A-With Position



Recommended P.C.Board Layout

THIRD ANGLE PROJECTION	GENERAL TOLERANCES (UNLESS SPECIFIED)		APPROVE BY FRANK	DATE 12/AUG/13	PART NO. FFH25408-DXXSXXX4K6XXA	ITEM NO. FFH25408	
	DESIGN UNITS Inch (metric)	X.±.012(0.30) X.X±.008(0.20) X.XX±.006(0.15) X.XXX±.004(0.10)	X.'±5' .X'±2' .XX'±1' .XXX'±0.5'	CHECKED BY CHERRY	DATE 12/AUG/13	TITLE Board to Board (Female Header) Pitch 2.54mm 180° Vertical (SMT)	
SCALE 5:1	SIZE A4	DRAWN BY JACOB		DATE 12/AUG/13	THIS DRAWING CONTAINS INFORMATION THAT IS PROPRIETARY TO DONG GUAN LANG LUN(3K-KAMING) ELECTRONIC PRODUCTS CO.,LTD. AND SHOULD NOT BE USED WITHOUT WRITTEN PERMISSON		

1 2 3 4 5 6 7 8



REV	LOCATIONS	DESCRIPTION	DATE

Circuits (n)	Part No.	Dimensions(in/mm)		Circuits (n)	Part No.	Dimensions(in/mm)	
		A	B			A	B
4	FFH25408-D04SXXX4K6XXA	.100(2.54)	.220(5.58)	44	FFH25408-D44SXXX4K6XXA	2.100(53.34)	2.220(56.38)
6	FFH25408-D06SXXX4K6XXA	.200(5.08)	.320(8.12)	46	FFH25408-D46SXXX4K6XXA	2.200(55.88)	2.320(58.92)
8	FFH25408-D08SXXX4K6XXA	.300(7.62)	.420(10.66)	48	FFH25408-D48SXXX4K6XXA	2.300(58.42)	2.420(61.46)
10	FFH25408-D10SXXX4K6XXA	.400(10.16)	.520(13.20)	50	FFH25408-D50SXXX4K6XXA	2.400(60.96)	2.520(64.00)
12	FFH25408-D12SXXX4K6XXA	.500(12.70)	.620(15.74)	52	FFH25408-D52SXXX4K6XXA	2.500(63.50)	2.620(66.54)
14	FFH25408-D14SXXX4K6XXA	.600(15.24)	.720(18.28)	54	FFH25408-D54SXXX4K6XXA	2.600(66.04)	2.720(69.08)
16	FFH25408-D16SXXX4K6XXA	.700(17.78)	.820(20.82)	56	FFH25408-D56SXXX4K6XXA	2.700(68.58)	2.820(71.62)
18	FFH25408-D18SXXX4K6XXA	.800(20.32)	.920(23.36)	58	FFH25408-D58SXXX4K6XXA	2.800(71.12)	2.920(74.16)
20	FFH25408-D20SXXX4K6XXA	.900(22.86)	1.020(25.90)	60	FFH25408-D60SXXX4K6XXA	2.900(73.66)	3.020(76.70)
22	FFH25408-D22SXXX4K6XXA	1.000(25.40)	1.120(28.44)	62	FFH25408-D62SXXX4K6XXA	3.000(76.20)	3.120(79.24)
24	FFH25408-D24SXXX4K6XXA	1.100(27.94)	1.220(30.98)	64	FFH25408-D64SXXX4K6XXA	3.100(78.74)	3.220(81.78)
26	FFH25408-D26SXXX4K6XXA	1.200(30.48)	1.320(33.52)	66	FFH25408-D66SXXX4K6XXA	3.200(81.28)	3.320(84.32)
28	FFH25408-D28SXXX4K6XXA	1.300(33.02)	1.420(36.06)	68	FFH25408-D68SXXX4K6XXA	3.300(83.82)	3.420(86.86)
30	FFH25408-D30SXXX4K6XXA	1.400(35.56)	1.520(38.60)	70	FFH25408-D70SXXX4K6XXA	3.400(86.36)	3.520(89.40)
32	FFH25408-D32SXXX4K6XXA	1.500(38.10)	1.620(41.14)	72	FFH25408-D72SXXX4K6XXA	3.500(88.90)	3.620(91.94)
34	FFH25408-D34SXXX4K6XXA	1.600(40.64)	1.720(43.68)	74	FFH25408-D74SXXX4K6XXA	3.600(91.44)	3.720(94.48)
36	FFH25408-D36SXXX4K6XXA	1.700(43.18)	1.820(46.22)	76	FFH25408-D76SXXX4K6XXA	3.700(93.98)	3.820(97.02)
38	FFH25408-D38SXXX4K6XXA	1.800(45.72)	1.920(48.76)	78	FFH25408-D78SXXX4K6XXA	3.800(96.52)	3.920(99.56)
40	FFH25408-D40SXXX4K6XXA	1.900(48.26)	2.020(51.30)	80	FFH25408-D80SXXX4K6XXA	3.900(99.06)	4.020(102.10)
42	FFH25408-D42SXXX4K6XXA	2.000(50.80)	2.120(53.84)				



 THIRD ANGLE PROJECTION	GENERAL TOLERANCES (UNLESS SPECIFIED)		APPROVE BY FRANK	DATE 12/AUG/13	PART NO. FFH25408-DXXSXXX4K6XXA	ITEM NO. FFH25408	 3K-KAMING®		
	DESIGN UNITS Inch (metric)	X.±.012(0.30)	X.±5'	CHECKED BY CHERRY	DATE 12/AUG/13	TITLE Board to Board (Female Header) Pitch 2.54mm 180° Vertical (SMT)		REV 0	SHEET NO. 2/2
	SCALE 5:1	SIZE A4	X.XX±.008(0.20)	X.±2'	DRAWN BY JACOB	DATE 12/AUG/13		THIS DRAWING CONTAINS INFORMATION THAT IS PROPRIETARY TO DONG GUAN LANG LUN(3K-KAMING) ELECTRONIC PRODUCTS CO.,LTD. AND SHOULD NOT BE USED WITHOUT WRITTEN PERMISSION	