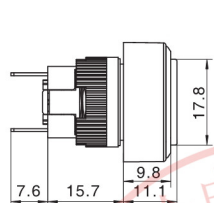
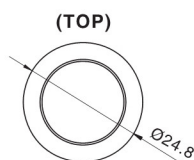


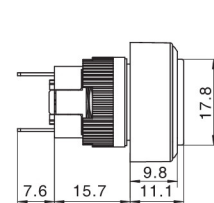
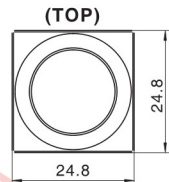
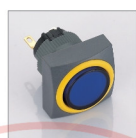
M16指示灯 / M16 Indicator

名称/外观 Product appearance	色环颜色 Ring Color	灯罩颜色 Top Color	额定电压 Rated Voltage
圆形/Round M16-170 ■□● 	方形/Square M16-180 ■□● 	请用下列颜色编码 替换型号中的"■" R 红色/Red G 绿色/Green Y 黄色/Yellow W 白色/White B 蓝色/Blue	请用下列颜色编码 替换型号中的"□" R 红色/Red G 绿色/Green Y 黄色/Yellow W 白色/White B 蓝色/Blue
			请用下列颜色编码 替换型号中的"●" D:24VDC E:12VDC F:6.3VDC A1:110VAC A2:220VAC

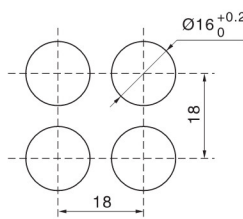
圆形指示灯



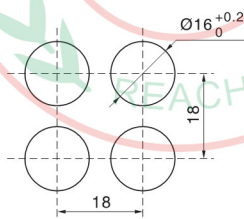
方形指示灯



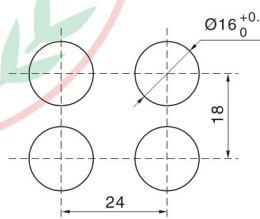
安装尺寸图 / Installation size



圆形Round

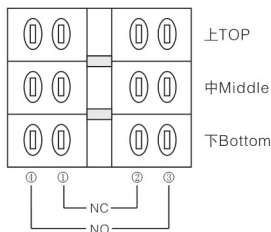


方形Square



矩形Rectangle

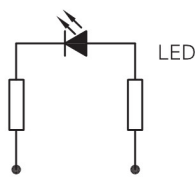
端子排列图/ Terminal style



右侧产品的底座看成正面时，端子排列顺序及内部电路图。
As shown at right, the base of product to be seen as front side, which show terminal disposition and inside coil drawing.

产品出产时基本安装触点座1C(1a+1b)，在需要时请指定增加最多3C(1a+1b)。
Product assemble contact 1C(1a+1b), if needed, Please appoint to add at least 3C(1a+1b)

灯珠电路图/ Contacts Circuit



适用于交直流12VDC, 24VDC, 110VAC, 220VAC系列
for 12VDC, 24VDC, 110VAC, 220VAC