



# 东莞市朗纶电子制品有限公司 Dongguan langlun electronic products Co., Ltd

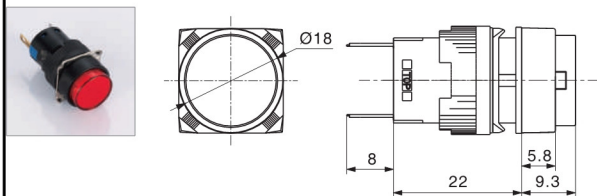
## K16指示灯系列 / K16 Indicator Series

名称/外观 Product appearance			灯罩颜色 Top Color	额定电压 Rated Voltage
圆形 / Round <b>K16-170</b> 	方形 / Square <b>K16-180</b> 	长方形 / Rectangle <b>K16-190</b> 	请用下列颜色编码 替换型号中的"□"   红色/Red  绿色/Green  黄色/Yellow  白色/White  蓝色/Blue  橙色/Orange	请用下列颜色编码 替换型号中的"●"  D:24VDC E:12VDC F:6.3VDC A1:110VAC A2:220VAC
				
  	  	  		

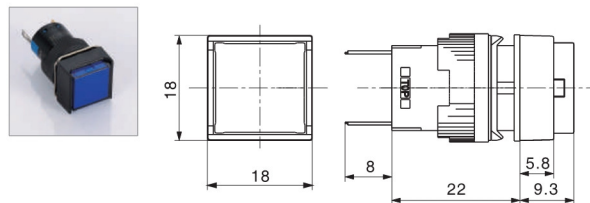
## K16-G按钮系列 / K16-G Push Button

名称/外观 Product appearance	操作类别 Operation	带灯形式 Illuminated type	触点 Contact	产品型号 Model	灯罩颜色 Top Color	额定电压 Rated Voltage
圆形 / Round 	自复 Momentary	不带灯 Without LED	单刀/SPDT	<b>K16-211</b> 	请用下列颜色编码 替换型号中的"□"  <b>R</b> 红色/Red <b>G</b> 绿色/Green <b>Y</b> 黄色/Yellow <b>W</b> 白色/White <b>B</b> 蓝色/Blue <b>A</b> 橙色/Orange	请用下列颜色编码 替换型号中的"●"  D:24VDC E:12VDC F:6.3VDC A1:110VAC A2:220VAC
			双刀/DPDT	<b>K16-212</b> 		
		带灯 With LED	单刀/SPDT	<b>K16-271</b> 		
			双刀/DPDT	<b>K16-272</b> 		
	自锁 Maintained	不带灯 Without LED	单刀/SPDT	<b>K16-311</b> 		
		带灯 With LED	双刀/DPDT	<b>K16-372</b> 		
方形 / Square 	自复 Momentary	不带灯 Without LED	单刀/SPDT	<b>K16-221</b> 	请用下列颜色编码 替换型号中的"□"  <b>R</b> 红色/Red <b>G</b> 绿色/Green <b>Y</b> 黄色/Yellow <b>W</b> 白色/White <b>B</b> 蓝色/Blue <b>A</b> 橙色/Orange	请用下列颜色编码 替换型号中的"●"  D:24VDC E:12VDC F:6.3VDC A1:110VAC A2:220VAC
			双刀/DPDT	<b>K16-222</b> 		
		带灯 With LED	单刀/SPDT	<b>K16-281</b> 		
			双刀/DPDT	<b>K16-282</b> 		
	自锁 Maintained	不带灯 Without LED	单刀/SPDT	<b>K16-321</b> 		
			双刀/DPDT	<b>K16-322</b> 		
		带灯 With LED	单刀/SPDT	<b>K16-381</b> 		
			双刀/DPDT	<b>K16-382</b> 		
长方形 / Rectangle 	自复 Momentary	不带灯 Without LED	单刀/SPDT	<b>K16-231</b> 	请用下列颜色编码 替换型号中的"□"  <b>R</b> 红色/Red <b>G</b> 绿色/Green <b>Y</b> 黄色/Yellow <b>W</b> 白色/White <b>B</b> 蓝色/Blue <b>A</b> 橙色/Orange	请用下列颜色编码 替换型号中的"●"  D:24VDC E:12VDC F:6.3VDC A1:110VAC A2:220VAC
			双刀/DPDT	<b>K16-232</b> 		
		带灯 With LED	单刀/SPDT	<b>K16-291</b> 		
			双刀/DPDT	<b>K16-292</b> 		
	自锁 Maintained	不带灯 Without LED	单刀/SPDT	<b>K16-331</b> 		
			双刀/DPDT	<b>K16-332</b> 		
		带灯 With LED	单刀/SPDT	<b>K16-391</b> 		
			双刀/DPDT	<b>K16-392</b> 		

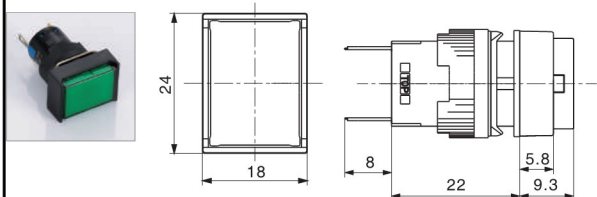
圆形指示灯



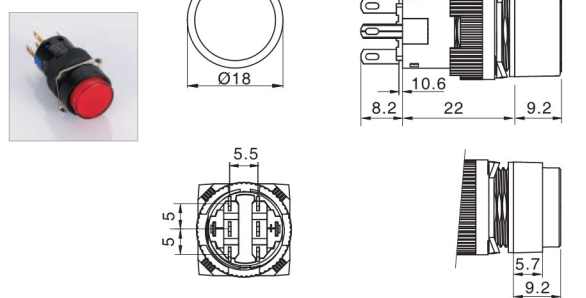
方形指示灯



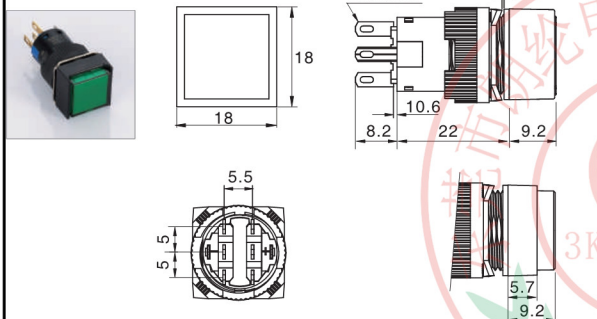
长方形指示灯



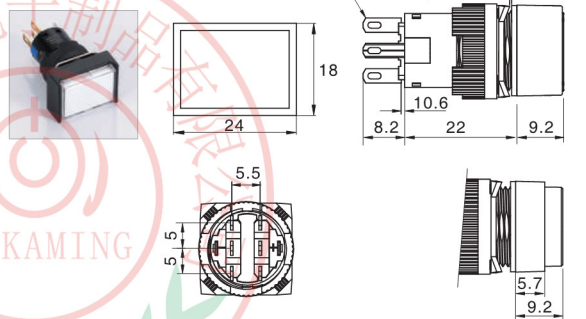
圆形按钮



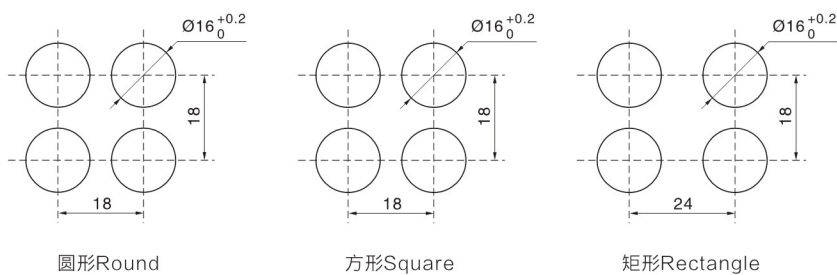
方形按钮



长方形按钮



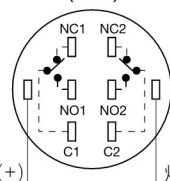
## □ 安装尺寸图 / Installation size



## □ 端子排列图 / Terminal style

按钮开关/ Push Button

(TOP)

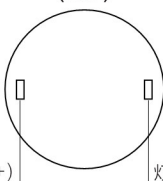


灯端子(+)

灯端子(-)

指示灯/Indicator

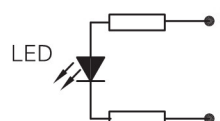
(TOP)



灯端子(+)

灯端子(-)

## □ 灯珠电路图/LED Circuit



适用于交直流12VDC, 24VDC, 110VAC, 220VAC系列  
for 12VDC, 24VDC, 110VAC, 220VAC