

Dimensions(in/mm)	
H	W
.039(1.00)	.079(2.00)
.059(1.50)	
.079(2.00)	.098(2.50)
.098(2.50)	

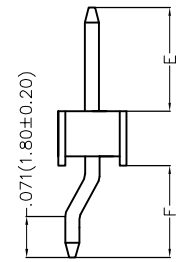
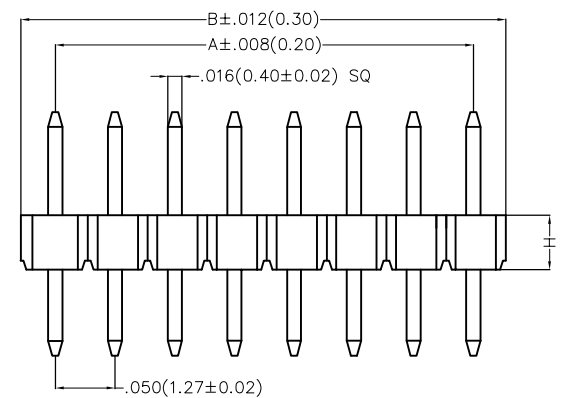
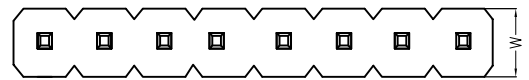
REV	LOCATIONS	DESCRIPTION	DATE	REVISER	APPD



SPECIFICATIONS

Electrical
 Current Rating: 1.0A AC(rms)/DC
 Voltage Rating: 250V AC(rms)/DC
 Contact Resistance: 20 mΩ Max
 Insulation Resistance: 1000 MΩ Min
 Withstanding Voltage: 600V AC r.m.s
 Temperature Range-Operating: -40°C~+105°C

Material and Plating
 Housing: Glass Filled Polyester (UL 94V-0), Color: Black
 Pin: Brass
 Pin Plating: Gold plated/ Selective gold plated on contact area and 120μ" Min. matte tin plated on tails area

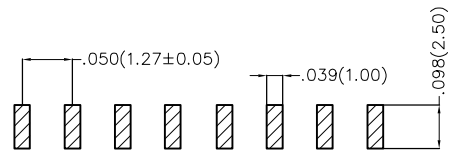


Ordering Information

FPH 127 42 - S XX B X XX 4 XX XX X 0 M
 1 2 3 4 5 6 7 8 9 10 11 12 13

1 Category FPH-Pin Header	2 Series Number 127-Pitch1.27mm	3 Distinction No. 42	4 Row Option S-Single Row	5 Circuits XX	6 Entry Angle B-90° Angle	7 Plating 1-Gold plated 7-Selective gold plated on contact area and matte tin plated on tails area
------------------------------	------------------------------------	-------------------------	------------------------------	------------------	------------------------------	--

8 Thickness of Plating 01-1μ" 15-15μ" Custom plate available	9 Material-Resin 4-PA6T	10 E Size 01,02...-Serial number (See Table1)	11 F Size 01,02...-Serial number (See Table1)	12 H Size 1,2...-Serial number (See Table1)	13 Packaging M-Reel
---	----------------------------	---	---	---	------------------------



Recommended P.C.Board Layout
 Tolerances: ±.002(0.05)

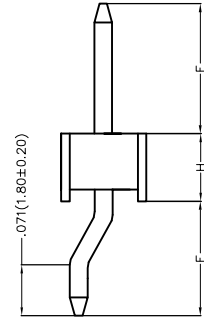
 THIRD ANGLE PROJECTION DESIGN UNITS Inch (metric) SCALE 5:1 SIZE A/L	GENERAL TOLERANCES (UNLESS SPECIFIED)		APPROVE BY VERNON	DATE 17/DEC/19	PART NO. FPH12742-SXXBXXX4XXXXX0M	ITEM NO. FPH12742	 3K-KAMING REV 0 SHEET NO. 1/3
	X.±.012(0.30)	X'.±5'	CHECKED BY KATE	DATE 17/DEC/19	TITLE Board to Board(Pin Header) Pitch 1.27mm 90° Vertical(SMT)		
	X.XX±.008(0.20)	.X'±2'	DRAWN BY ZOEY	DATE 17/DEC/19	THIS DRAWING CONTAINS INFORMATION THAT IS PROPRIETARY TO DONG GUAN LANG LUN(3K-KAMING) ELECTRONIC PRODUCTS CO.,LTD. AND SHOULD NOT BE USED WITHOUT WRITTEN PERMISSION		
	X.XX±.006(0.15)	.XX'±1'					
X.XXX±.004(0.10)	.XXX'±0.5'						

REV	LOCATIONS	DESCRIPTION	DATE	REVISER	APPD

Table1

Serial number	Dimensions(in/mm) E	Serial number	Dimensions(in/mm) E
01	.059(1.50)	19	.236(6.00)
02	.069(1.75)	20	.246(6.25)
03	.079(2.00)	21	.256(6.50)
04	.089(2.25)	22	.266(6.75)
05	.098(2.50)	23	.276(7.00)
06	.108(2.75)	24	.285(7.25)
07	.118(3.00)	25	.295(7.50)
08	.128(3.25)	26	.305(7.75)
09	.138(3.50)	27	.315(8.00)
10	.148(3.75)	28	.325(8.25)
11	.157(4.00)	29	.335(8.50)
12	.167(4.25)	30	.344(8.75)
13	.177(4.50)	31	.354(9.00)
14	.187(4.75)	32	.364(9.25)
15	.197(5.00)	33	.374(9.50)
16	.207(5.25)	34	.384(9.75)
17	.217(5.50)	35	.394(10.00)
18	.226(5.75)		

Serial number	Dimensions(in/mm) F	Serial number	Dimensions(in/mm) F
01	.110(2.80)	19	.252(6.40)
02	.118(3.00)	20	.260(6.60)
03	.126(3.20)	21	.268(6.80)
04	.134(3.40)	22	.276(7.00)
05	.142(3.60)	23	.283(7.20)
06	.150(3.80)	24	.291(7.40)
07	.157(4.00)	25	.299(7.60)
08	.165(4.20)	26	.307(7.80)
09	.173(4.40)	27	.315(8.00)
10	.181(4.60)	28	.323(8.20)
11	.189(4.80)	29	.331(8.40)
12	.197(5.00)	30	.339(8.60)
13	.205(5.20)	31	.346(8.80)
14	.213(5.40)	32	.354(9.00)
15	.220(5.60)	33	.362(9.20)
16	.228(5.80)	34	.370(9.40)
17	.236(6.00)	35	.378(9.60)
18	.244(6.20)	36	.386(9.80)



Serial number	Dimensions(in/mm) H
1	.039(1.00)
2	.059(1.50)
3	.079(2.00)
4	.098(2.50)



 THIRD ANGLE PROJECTION DESIGN UNITS Inch (metric) SCALE 5:1 SIZE A/L	GENERAL TOLERANCES (UNLESS SPECIFIED)		APPROVE BY VERNON	DATE 17/DEC/19	PART NO. FPH12742-SXXBXX4XXXXXOM	ITEM NO. FPH12742	 3K-KAMING REV 0 SHEET NO. 2/3
	X.±.012(0.30)	X'.±5'	CHECKED BY KATE	DATE 17/DEC/19	TITLE Board to Board(Pin Header) Pitch 1.27mm 90° Vertical(SMT)		
	X.XX±.008(0.20)	.X'±2'	DRAWN BY ZOEY	DATE 17/DEC/19	THIS DRAWING CONTAINS INFORMATION THAT IS PROPRIETARY TO DONG GUAN LANG LUN(3K-KAMING) ELECTRONIC PRODUCTS CO., LTD. AND SHOULD NOT BE USED WITHOUT WRITTEN PERMISSION		
	X.XX±.006(0.15)	.XX'±1'					
	X.XXX±.004(0.10)	.XXX'±0.5'					

REV	LOCATIONS	DESCRIPTION	DATE	REVSER	APPD



Circuits (n)	Part No.	Dimensions(in/mm)		Circuits (n)	Part No.	Dimensions(in/mm)	
		A	B			A	B
1	FPH12742-S01BXXX4XXXXXOM	--	.050(1.27)	21	FPH12742-S21BXXX4XXXXXOM	1.000(25.40)	1.050(26.67)
2	FPH12742-S02BXXX4XXXXXOM	.100(1.27)	.100(2.54)	22	FPH12742-S22BXXX4XXXXXOM	1.050(26.67)	1.100(27.94)
3	FPH12742-S03BXXX4XXXXXOM	.100(2.54)	.150(3.81)	23	FPH12742-S23BXXX4XXXXXOM	1.100(27.94)	1.150(29.21)
4	FPH12742-S04BXXX4XXXXXOM	.150(3.81)	.200(5.08)	24	FPH12742-S24BXXX4XXXXXOM	1.150(29.21)	1.200(30.48)
5	FPH12742-S05BXXX4XXXXXOM	.200(2.54)	.250(6.35)	25	FPH12742-S25BXXX4XXXXXOM	1.200(30.48)	1.250(31.75)
6	FPH12742-S06BXXX4XXXXXOM	.250(5.08)	.300(7.62)	26	FPH12742-S26BXXX4XXXXXOM	1.250(31.75)	1.300(33.02)
7	FPH12742-S07BXXX4XXXXXOM	.300(7.62)	.350(8.89)	27	FPH12742-S27BXXX4XXXXXOM	1.300(33.02)	1.350(34.29)
8	FPH12742-S08BXXX4XXXXXOM	.350(8.89)	.400(10.16)	28	FPH12742-S28BXXX4XXXXXOM	1.350(34.29)	1.400(35.56)
9	FPH12742-S09BXXX4XXXXXOM	.400(10.16)	.450(11.43)	29	FPH12742-S29BXXX4XXXXXOM	1.400(35.56)	1.450(36.83)
10	FPH12742-S10BXXX4XXXXXOM	.450(11.43)	.500(12.70)	30	FPH12742-S30BXXX4XXXXXOM	1.450(36.83)	1.500(38.10)
11	FPH12742-S11BXXX4XXXXXOM	.500(12.70)	.550(13.97)	31	FPH12742-S31BXXX4XXXXXOM	1.500(38.10)	1.550(39.37)
12	FPH12742-S12BXXX4XXXXXOM	.550(13.97)	.600(15.24)	32	FPH12742-S32BXXX4XXXXXOM	1.550(39.37)	1.600(40.64)
13	FPH12742-S13BXXX4XXXXXOM	.600(15.24)	.650(16.51)	33	FPH12742-S33BXXX4XXXXXOM	1.600(40.64)	1.650(41.91)
14	FPH12742-S14BXXX4XXXXXOM	.650(16.51)	.700(17.78)	34	FPH12742-S34BXXX4XXXXXOM	1.650(41.91)	1.700(43.18)
15	FPH12742-S15BXXX4XXXXXOM	.700(17.78)	.750(19.05)	35	FPH12742-S35BXXX4XXXXXOM	1.700(43.18)	1.750(44.45)
16	FPH12742-S16BXXX4XXXXXOM	.750(19.05)	.800(20.32)	36	FPH12742-S36BXXX4XXXXXOM	1.750(44.45)	1.800(45.72)
17	FPH12742-S17BXXX4XXXXXOM	.800(20.32)	.850(21.59)	37	FPH12742-S37BXXX4XXXXXOM	1.800(45.72)	1.850(46.99)
18	FPH12742-S18BXXX4XXXXXOM	.850(21.59)	.900(22.86)	38	FPH12742-S38BXXX4XXXXXOM	1.850(46.99)	1.900(48.26)
19	FPH12742-S19BXXX4XXXXXOM	.900(22.86)	.950(24.13)	39	FPH12742-S39BXXX4XXXXXOM	1.900(48.26)	1.950(49.53)
20	FPH12742-S20BXXX4XXXXXOM	.950(24.13)	1.000(25.40)	40	FPH12742-S40BXXX4XXXXXOM	1.950(49.53)	2.000(50.80)



<p>THIRD ANGLE PROJECTION</p>	GENERAL TOLERANCES (UNLESS SPECIFIED)		APPROVE BY VERNON	DATE 17/DEC/19	PART NO. FPH12742-SXXBXXX4XXXXXOM	ITEM NO. FPH12742	<p>3K-KAMING</p>	
	X.±.012(0.30)	X.±5'	CHECKED BY KATE	DATE 17/DEC/19	TITLE Board to Board(Pin Header) Pitch 1.27mm 90° Vertical(SMT)			REV 0 SHEET NO. 3/3
	X.XX±.008(0.20)	.X'±2'	DRAWN BY ZOEY	DATE 17/DEC/19	THIS DRAWING CONTAINS INFORMATION THAT IS PROPRIETARY TO DONG GUAN LANG LUN(3K-KAMING) ELECTRONIC PRODUCTS CO., LTD. AND SHOULD NOT BE USED WITHOUT WRITTEN PERMISSION			
	X.XX±.006(0.15)	.XX'±1'						
SCALE 5:1	SIZE A4	X.XXX±.004(0.10)	.XX'±0.5'					