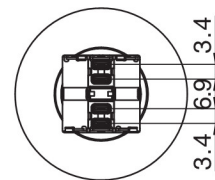
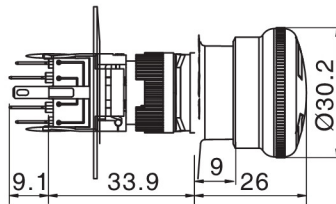
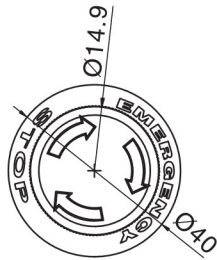




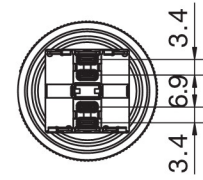
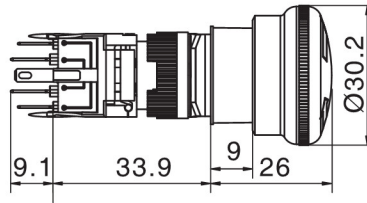
F16系列急停按钮 / F16 E-stop button series

名称/外观 Product appearance	操作类别 Operation	带灯形式 Illuminated type	触点 Contact	产品型号 Model	灯罩颜色 Top Color	额定电压 Rated Voltage
急停按钮 / E-stop button  	自锁 Maintained	不带灯 Without LED	单刀/SPDT	F16-811 □●	请用下列颜色编码 替换型号中的"□" R 红色/Red	请用下列颜色编码 替换型号中的"●" D:24VDC E:12VDC F:6.3VDC A1:110VAC A2:220VAC
			双刀/DPDT	F16-812 □●		
			三刀/TPDT	F16-813 □●		
		带灯 With LED	单刀/SPDT	F16-871 □		
			双刀/DPDT	F16-872 □		
			三刀/TPDT	F16-873 □		
带警示灯急停按钮 With warning LED E-stop  	自锁 Maintained	不带灯 Without LED	单刀/SPDT	F16-A11 □●	请用下列颜色编码 替换型号中的"□" R 红色/Red	请用下列颜色编码 替换型号中的"●" D:24VDC E:12VDC F:6.3VDC A1:110VAC A2:220VAC
			双刀/DPDT	F16-A12 □●		
			三刀/TPDT	F16-A13 □●		
		带灯 With LED	单刀/SPDT	F16-A71 □		
			双刀/DPDT	F16-A72 □		
			三刀/TPDT	F16-A73 □		
B型急停按钮 / B type E-stop  	自锁 Maintained	不带灯 Without LED	单刀/SPDT	F16-B11 □●	请用下列颜色编码 替换型号中的"□" R 红色/Red	请用下列颜色编码 替换型号中的"●" D:24VDC E:12VDC F:6.3VDC A1:110VAC A2:220VAC
			双刀/DPDT	F16-B12 □●		
			三刀/TPDT	F16-B13 □●		
		带灯 With LED	单刀/SPDT	F16-B71 □		
			双刀/DPDT	F16-B72 □		
			三刀/TPDT	F16-B73 □		

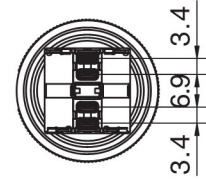
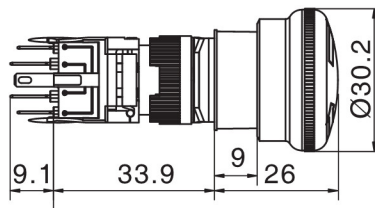
带警示灯急停按钮



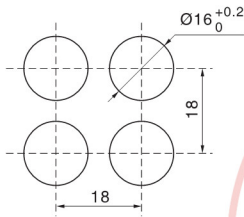
急停按钮



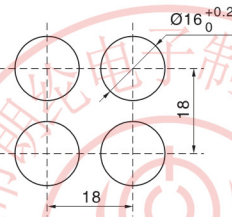
B型急停按钮



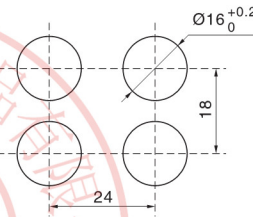
□ 安装尺寸图 / Installation size



圆形Round

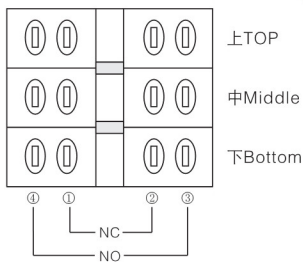


方形Square



矩形Rectangle

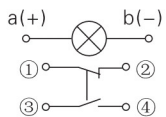
□ 端子排列图 / Terminal style



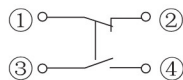
□ 右侧产品的底座看成正面时，端子排列顺序及内部电路图。
As shown at right, the base of product to be seen as front side, which show terminal disposition and inside coil drawing.

□ 产品出产时基本安装触点座1C(1a+1b)，
在需要时请指定增加最多3C(1a+1b)。
Product assemble contact 1C(1a+1b),
if needed, Please appoint to add at least 3C(1a+1b)

□ 接线图 / Contacts Circuit

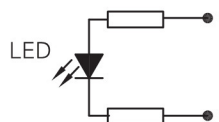


带灯按钮电路图
With LED circurs



不带灯按钮电路图
Without LED circurs

□ 灯珠电路图 / LED Circuit



适用于交直流12VDC, 24VDC, 110VAC,
220VAC系列
for 12VDC, 24VDC, 110VAC, 220VAC