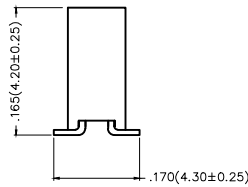
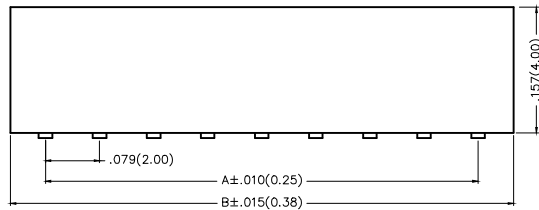
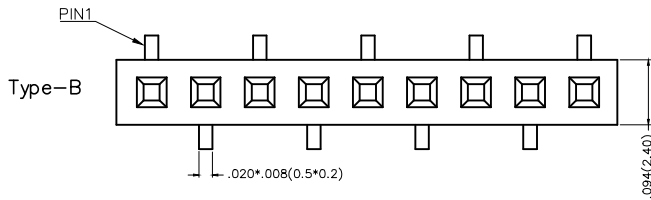
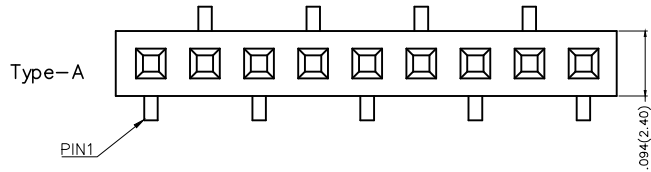
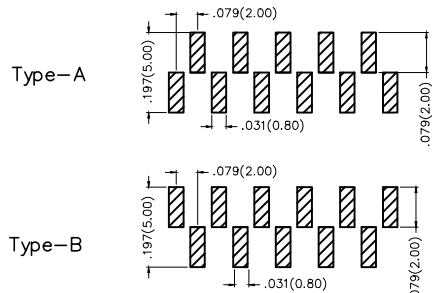
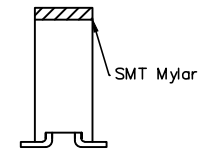
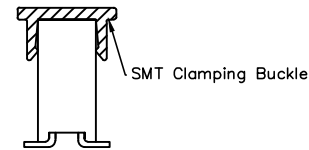


REV	LOCATIONS	DESCRIPTION	DATE	REVISER	APPD



Packing: M-Reel(With Cap)

Packing: M1-Reel(With Mylar)



Recommended P.C.Board Layout



Electrical

Current Rating: 2A AC(rms)/DC
Voltage Rating: 250V AC(rms)/DC
Contact Resistance: 20 mΩ Max
Insulation Resistance: 500 MΩ MIN
Withstanding Voltage: 100V AC r.m.s
Temperature Range-Operating: -25°C~+85°C

Material and Plating

Housing: PA6T(UL 94V-0)
Contact Pin: Brass
Plating: Gold Plated/Selective gold in contact area, tin on tail

Ordering Information

FFH 200 16 — S XX S X XX 4 K6 XX X
1 2 3 4 5 6 7 8 9 10 11 12

1 Category FFH-Female Header	2 Series Number 200-Pitch2.0mm	3 Distinction No. 16	4 Row Option S-Single row	5 Circuits XX	6 Entry Angle S-180° Vertical
7 Plating 1-Gold Plated 3-Selective gold in contact area, tin on tail	8 Thickness of Plating 00-Gold Flash 05-5μ" Custom plate available	9 Material-Resin 4-PA6T	10 Color-Resin K6-Black	11 Packaging M-Reel(With Cap) M1-Reel(With Mylar)	12 Type A Type -A B Type -B

THIRD ANGLE PROJECTION	GENERAL TOLERANCES (UNLESS SPECIFIED)		APPROVE BY FRANK	DATE 23/JUL/13	PART NO. FFH20016-SXXSXXX4K6XXX	ITEM NO. FFH20016	
	DESIGN UNITS Inch (metric)	X.±.012(0.30) X.±5' X.X±.008(0.20) .X'±2'	CHECKED BY CHERRY	DATE 23/JUL/13	TITLE Board to Board (Female Header) Pitch 2.0mm 180° Vertical (SMT)		
SCALE 5:1	SIZE A4	X.XX±.006(0.15) .XX'±1" X.XXX±.004(0.10) .XXX'±0.5'	DRAWN BY JACOB	DATE 23/JUL/13	THIS DRAWING CONTAINS INFORMATION THAT IS PROPRIETARY TO DONG GUAN LANG LUN(3K-KAMING) ELECTRONIC PRODUCTS CO.,LTD. AND SHOULD NOT BE USED WITHOUT WRITTEN PERMISSION		

REV	LOCATIONS	DESCRIPTION	DATE	REVISER	APPD



Circuits (n)	Part No.	Dimensions(in/mm)		Circuits (n)	Part No.	Dimensions(in/mm)	
		A	B			A	B
2	FFH20016-S02SXXX4K6MX	.079(2.00)	.177(4.50)	22	FFH20016-S22SXXX4K6MX	1.654(42.00)	1.752(44.50)
3	FFH20016-S03SXXX4K6MX	.157(4.00)	.256(6.50)	23	FFH20016-S23SXXX4K6MX	1.732(44.00)	1.831(46.50)
4	FFH20016-S04SXXX4K6MX	.236(6.00)	.335(8.50)	24	FFH20016-S24SXXX4K6MX	1.811(46.00)	1.909(48.50)
5	FFH20016-S05SXXX4K6MX	.315(8.00)	.413(10.50)	25	FFH20016-S25SXXX4K6MX	1.890(48.00)	1.988(50.50)
6	FFH20016-S06SXXX4K6MX	.394(10.00)	.492(12.50)	26	FFH20016-S26SXXX4K6MX	1.969(50.00)	2.067(52.50)
7	FFH20016-S07SXXX4K6MX	.472(12.00)	.571(14.50)	27	FFH20016-S27SXXX4K6MX	2.047(52.00)	2.146(54.50)
8	FFH20016-S08SXXX4K6MX	.551(14.00)	.650(16.50)	28	FFH20016-S28SXXX4K6MX	2.126(54.00)	2.224(56.50)
9	FFH20016-S09SXXX4K6MX	.630(16.00)	.728(18.50)	29	FFH20016-S29SXXX4K6MX	2.205(56.00)	2.303(58.50)
10	FFH20016-S10SXXX4K6MX	.709(18.00)	.807(20.50)	30	FFH20016-S30SXXX4K6MX	2.283(58.00)	2.382(60.50)
11	FFH20016-S11SXXX4K6MX	.787(20.00)	.886(22.50)	31	FFH20016-S31SXXX4K6MX	2.362(60.00)	2.460(62.50)
12	FFH20016-S12SXXX4K6MX	.866(22.00)	.965(24.50)	32	FFH20016-S32SXXX4K6MX	2.441(62.00)	2.539(64.50)
13	FFH20016-S13SXXX4K6MX	.845(24.00)	1.043(26.50)	33	FFH20016-S33SXXX4K6MX	2.520(64.00)	2.618(66.50)
14	FFH20016-S14SXXX4K6MX	1.024(26.00)	1.122(28.50)	34	FFH20016-S34SXXX4K6MX	2.598(66.00)	2.697(68.50)
15	FFH20016-S15SXXX4K6MX	1.102(28.00)	1.201(30.50)	35	FFH20016-S35SXXX4K6MX	2.677(68.00)	2.776(70.50)
16	FFH20016-S16SXXX4K6MX	1.181(30.00)	1.280(32.50)	36	FFH20016-S36SXXX4K6MX	2.756(70.00)	2.854(72.50)
17	FFH20016-S17SXXX4K6MX	1.260(32.00)	1.358(34.50)	37	FFH20016-S37SXXX4K6MX	2.835(72.00)	2.933(74.50)
18	FFH20016-S18SXXX4K6MX	1.339(34.00)	1.437(36.50)	38	FFH20016-S38SXXX4K6MX	2.913(74.00)	3.012(76.50)
19	FFH20016-S19SXXX4K6MX	1.417(36.00)	1.516(38.50)	39	FFH20016-S39SXXX4K6MX	2.992(76.00)	3.091(78.50)
20	FFH20016-S20SXXX4K6MX	1.496(38.00)	1.594(40.50)	40	FFH20016-S40SXXX4K6MX	3.071(78.00)	3.169(80.50)
21	FFH20016-S21SXXX4K6MX	1.575(40.00)	1.673(42.50)				



 THIRD ANGLE PROJECTION	GENERAL TOLERANCES (UNLESS SPECIFIED)		APPROVE BY	DATE	PART NO.	ITEM NO.	 3K-KAMING®
	X.±0.12(0.30)	X.±5'	FRANK	23/JUL/13	FFH20016-SXXSXXX4K6XXX	FFH20016	
DESIGN UNITS Inch (metric)	X.X±.008(0.20)	.X'±2'	CHECKED BY	DATE	TITLE		REV 0 SHEET NO. 2/2
SCALE SIZE	X.XX±.006(0.15)	.XX'±1'	CHERRY	23/JUL/13	Board to Board (Female Header) Pitch 2.00mm 180° Vertical (SMT)		
5:1 A4	X.XXX±.004(0.10)	.XXX'±0.5'	DRAWN BY	DATE	THIS DRAWING CONTAINS INFORMATION THAT IS PROPRIETARY TO DONG GUAN LANG LUN(3K-KAMING) ELECTRONIC PRODUCTS CO.,LTD. AND SHOULD NOT BE USED WITHOUT WRITTEN PERMISSION		
			JACOB	23/JUL/13			