

| REV | LOCATIONS | DESCRIPTION | DATE | REVISER | APPD |
|-----|-----------|-------------|------|---------|------|
| | | | | | |

Electrical

Current Rating: 2A AC(rms)/DC

Voltage Rating: 250V AC(rms)/DC

Contact Resistance: 20 mΩ Max

Insulation Resistance: 500 MΩ MIN

Withstanding Voltage: 100V AC r.m.s

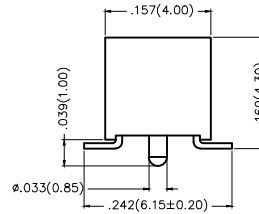
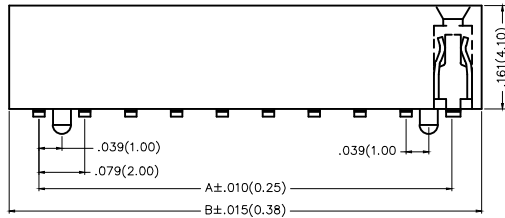
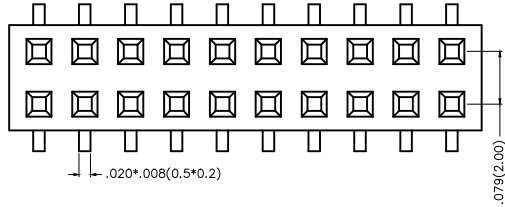
Temperature Range—Operating: -25°C~+85°C

Material and Plating

Housing: PA6T(UL 94V-0)

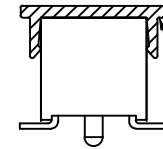
Contact Pin: Brass

Plating: Gold Plated/Selective gold in contact area,
matte(bright) tin on tail

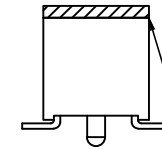


Packing: M—Reel(With Cap)

Packing: M1—Reel(With Mylar)



SMT Clamping Buckle

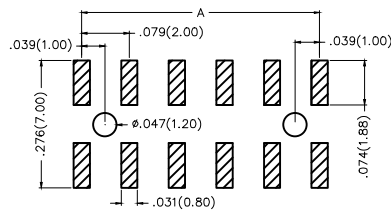


SMT Mylar

Ordering Information



FFH 200 04 — D XX S X XX 4 K6 XX
1 2 3 4 5 6 7 8 9 10 11

| | | | | | |
|--|---|----------------------------|------------------------------|---|----------------------------------|
| 1 Category FFH—Female Header | 2 Series Number 200—Pitch 2.0mm | 3 Distinction No. 05 | 4 Row Option D—Double Row | 5 Circuits XX | 6 Entry Angle S—180° Vertical |
| 7 Plating 1—Gold Plated 3—Selective gold in contact area, matte(bright) tin on tail | 8 Thickness of Plating 00—Gold Flash 05—5μ" Custom plate available | 9 Material—Resin 4—PA6T | 10 Color—Resin K6—Black | 11 Packaging M—Reel(With Cap) M1—Reel(With Mylar) | |



Recommended P.C.Board Layout



| | | | | | | | | | | |
|---|------------|--|------------|---------------------|-------------------|---|--|----------------------|---|--|
|  THIRD ANGLE PROJECTION | | GENERAL TOLERANCES (UNLESS SPECIFIED) | | APPROVE BY FRANK | DATE 23/JUL/13 | PART NO. FFH20004-DXXSXXX4K6XX | | ITEM NO. FFH20004 |  3K-KAMING® | |
| DESIGN UNITS Inch (metric) | | X.±.012(0.30) | X.±5° | CHECKED BY | DATE | TITLE Board to Board (Female Header) Pitch 2.0mm 180° Vertical (SMT) | | REV 0 | | |
| | | X.X±.008(0.20) | .X'±2° | CHERRY | 23/JUL/13 | | | | | |
| SCALE 5:1 | SIZE A4 | X.XX±.006(0.15) | .XX'±1° | DRAWN BY | DATE | THIS DRAWING CONTAINS INFORMATION THAT IS PROPRIETARY TO DONG GUAN LANG LUN(3K-KAMING) ELECTRONIC PRODUCTS CO., LTD. AND SHOULD NOT BE USED WITHOUT WRITTEN PERMISSION | | | | |
| | | X.XXX±.004(0.10) | .XXX'±0.5° | JACOB | 23/JUL/13 | | | | | |
| 4 | | 5 | | 6 | | 7 | | 8 | | |

