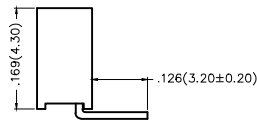
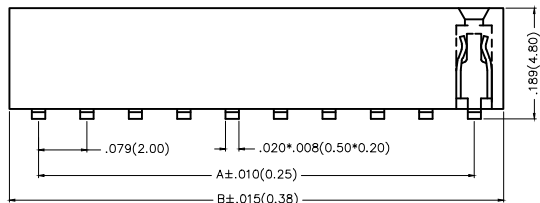
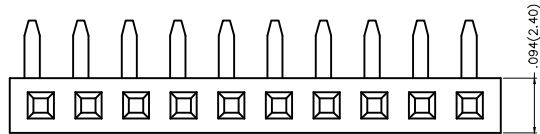


| REV | LOCATIONS | DESCRIPTION | DATE | REVISER | APPD |
|-----|-----------|-------------|------|---------|------|
| | | | | | |



Electrical
 Current Rating: 2A AC(rms)/DC
 Voltage Rating: 250V AC(rms)/DC
 Contact Resistance: 20 mΩ Max
 Insulation Resistance: 500 MΩ MIN
 Withstanding Voltage: 100V AC r.m.s
 Temperature Range-Operating: -25°C ~ +85°C

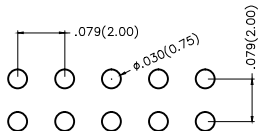
Material and Plating
 Housing: PA6T(UL 94V-0)
 Contact Pin: Brass
 Plating: Gold Plated/Selective gold in contact area, tin on tail



Ordering Information

FFH 200 02 — S XX B X XX 4 K6 K
 1 2 3 4 5 6 7 8 9 10 11

| | | | | | |
|---|---|----------------------------|------------------------------|------------------------|------------------------------|
| 1 Category FFH-Female Header | 2 Series Number 200-Pitch2.0mm | 3 Distinction No. 02 | 4 Row Option S-Single Row | 5 Circuits XX | 6 Entry Angle B-90° Angle |
| 7 Plating 1-Gold Plated 3-Selective gold in contact area, tin on tail | 8 Thickness of Plating 00-Gold Flash 05-5μ" Custom plate available | 9 Material-Resin 4-PA6T | 10 Color-Resin K6-Black | 11 Packaging K-Tray | |



Recommended P.C.Board Layout

| | | | | | | | |
|----------------------------|---------------------------------------|-------------------------------------|-----------------------|----------------------|---------------------------------|---|---------------|
| THIRD ANGLE PROJECTION | GENERAL TOLERANCES (UNLESS SPECIFIED) | | APPROVE BY FRANK | DATE 22/AUG/13 | PART NO. FFH20002-SXXBXX4K6K | ITEM NO. FFH20002 | 3K-KAMING |
| | DESIGN UNITS Inch (metric) | X.±.012(0.30) X.X±.008(0.20) | X.±5° .X'±2° | CHECKED BY CHERRY | DATE 22/AUG/13 | TITLE Board to Board (Female Header) Pitch 2.0mm 90° Angle (DIP) | |
| SCALE 5:1 | SIZE A4 | X.XX±.006(0.15) X.XXX±.004(0.10) | .XX'±1° .XXX'±0.5° | DRAWN BY JACOB | DATE 22/AUG/13 | THIS DRAWING CONTAINS INFORMATION THAT IS PROPRIETARY TO DONG GUAN LANG LUN(3K-KAMING) ELECTRONIC PRODUCTS CO.,LTD. AND SHOULD NOT BE USED WITHOUT WRITTEN PERMISSION | |

| | | | | | |
|-----|-----------|-------------|------|---------|------|
| REV | LOCATIONS | DESCRIPTION | DATE | REVISER | APPD |
| | | | | | |



| Circuits (n) | Part No. | Dimensions(in/mm) | | Circuits (n) | Part No. | Dimensions(in/mm) | |
|--------------|----------------------|-------------------|--------------|--------------|----------------------|-------------------|--------------|
| | | A | B | | | A | B |
| 2 | FFH20002-S02BXXX4K6K | .079(2.00) | .177(4.50) | 22 | FFH20002-S22BXXX4K6K | 1.654(42.00) | 1.752(44.50) |
| 3 | FFH20002-S03BXXX4K6K | .157(4.00) | .256(6.50) | 23 | FFH20002-S23BXXX4K6K | 1.732(44.00) | 1.831(46.50) |
| 4 | FFH20002-S04BXXX4K6K | .236(6.00) | .335(8.50) | 24 | FFH20002-S24BXXX4K6K | 1.811(46.00) | 1.909(48.50) |
| 5 | FFH20002-S05BXXX4K6K | .315(8.00) | .413(10.50) | 25 | FFH20002-S25BXXX4K6K | 1.890(48.00) | 1.988(50.50) |
| 6 | FFH20002-S06BXXX4K6K | .394(10.00) | .492(12.50) | 26 | FFH20002-S26BXXX4K6K | 1.969(50.00) | 2.067(52.50) |
| 7 | FFH20002-S07BXXX4K6K | .472(12.00) | .571(14.50) | 27 | FFH20002-S27BXXX4K6K | 2.047(52.00) | 2.146(54.50) |
| 8 | FFH20002-S08BXXX4K6K | .551(14.00) | .650(16.50) | 28 | FFH20002-S28BXXX4K6K | 2.126(54.00) | 2.224(56.50) |
| 9 | FFH20002-S09BXXX4K6K | .630(16.00) | .728(18.50) | 29 | FFH20002-S29BXXX4K6K | 2.205(56.00) | 2.303(58.50) |
| 10 | FFH20002-S10BXXX4K6K | .709(18.00) | .807(20.50) | 30 | FFH20002-S30BXXX4K6K | 2.283(58.00) | 2.382(60.50) |
| 11 | FFH20002-S11BXXX4K6K | .787(20.00) | .886(22.50) | 31 | FFH20002-S31BXXX4K6K | 2.362(60.00) | 2.460(62.50) |
| 12 | FFH20002-S12BXXX4K6K | .866(22.00) | .965(24.50) | 32 | FFH20002-S32BXXX4K6K | 2.441(62.00) | 2.539(64.50) |
| 13 | FFH20002-S13BXXX4K6K | .845(24.00) | 1.043(26.50) | 33 | FFH20002-S33BXXX4K6K | 2.520(64.00) | 2.618(66.50) |
| 14 | FFH20002-S14BXXX4K6K | 1.024(26.00) | 1.122(28.50) | 34 | FFH20002-S34BXXX4K6K | 2.598(66.00) | 2.697(68.50) |
| 15 | FFH20002-S15BXXX4K6K | 1.102(28.00) | 1.201(30.50) | 35 | FFH20002-S35BXXX4K6K | 2.677(68.00) | 2.776(70.50) |
| 16 | FFH20002-S16BXXX4K6K | 1.181(30.00) | 1.280(32.50) | 36 | FFH20002-S36BXXX4K6K | 2.756(70.00) | 2.854(72.50) |
| 17 | FFH20002-S17BXXX4K6K | 1.260(32.00) | 1.358(34.50) | 37 | FFH20002-S37BXXX4K6K | 2.835(72.00) | 2.933(74.50) |
| 18 | FFH20002-S18BXXX4K6K | 1.339(34.00) | 1.437(36.50) | 38 | FFH20002-S38BXXX4K6K | 2.913(74.00) | 3.012(76.50) |
| 19 | FFH20002-S19BXXX4K6K | 1.417(36.00) | 1.516(38.50) | 39 | FFH20002-S39BXXX4K6K | 2.992(76.00) | 3.091(78.50) |
| 20 | FFH20002-S20BXXX4K6K | 1.496(38.00) | 1.594(40.50) | 40 | FFH20002-S40BXXX4K6K | 3.071(78.00) | 3.169(80.50) |
| 21 | FFH20002-S21BXXX4K6K | 1.575(40.00) | 1.673(42.50) | | | | |



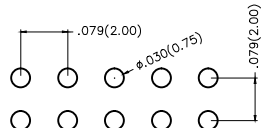
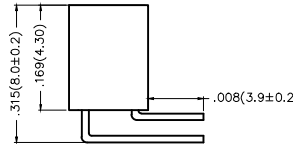
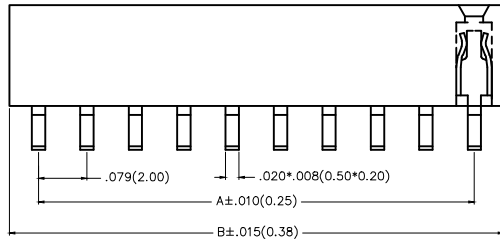
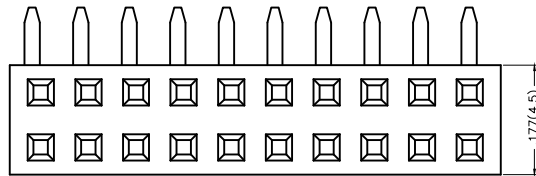
| | | | | | | | | |
|-------------------------------|---------------------------------------|-----------|------------|-----------|---|----------|----------------|----------------------|
| THIRD ANGLE PROJECTION | GENERAL TOLERANCES (UNLESS SPECIFIED) | | APPROVE BY | DATE | PART NO. | ITEM NO. | 3K-KAMING® | |
| | X.±0.12(0.30) | X.±5' | FRANK | 22/AUG/13 | | | | FFH20002-SXXBXXX4K6K |
| DESIGN UNITS Inch (metric) | X.X±.008(0.20) | .X±2' | CHECKED BY | DATE | TITLE | | | REV 0 |
| SCALE | X.XX±.006(0.15) | .XX±1' | CHERRY | 22/AUG/13 | Board to Board (Female Header) Pitch 2.00mm 90° Angle (DIP) | | | |
| SIZE | X.XXX±.004(0.10) | .XXX±0.5' | DRAWN BY | DATE | THIS DRAWING CONTAINS INFORMATION THAT IS PROPRIETARY TO DONG GUAN LANG LUN(3K-KAMING) ELECTRONIC PRODUCTS CO.,LTD. AND SHOULD NOT BE USED WITHOUT WRITTEN PERMISSION | | | |
| 5:1 | A4 | | JACOB | 22/AUG/13 | | | | |

| REV | LOCATIONS | DESCRIPTION | DATE | REVISER | APPD |
|-----|-----------|-------------|------|---------|------|
| | | | | | |



Electrical
 Current Rating: 2A AC(rms)/DC
 Voltage Rating: 250V AC(rms)/DC
 Contact Resistance: 20 mΩ Max
 Insulation Resistance: 500 MΩ MIN
 Withstanding Voltage: 100V AC r.m.s
 Temperature Range-Operating: -25°C~+85°C

Material and Plating
 Housing: PA6T(UL 94V-0)
 Contact Pin: Brass
 Plating: Gold Plated/Selective gold in contact area, tin on tail



Recommended P.C.Board Layout

Ordering Information

FFH 200 02 — D XX B X XX 4 K6 K
 1 2 3 4 5 6 7 8 9 10 11

| | | | | | |
|---|---|----------------------------|------------------------------|------------------------|------------------------------|
| 1 Category FFH-Female Header | 2 Series Number 200-Pitch2.0mm | 3 Distinction No. 02 | 4 Row Option D-Double Row | 5 Circuits XX | 6 Entry Angle B-90° Angle |
| 7 Plating 1-Gold Plated 3-Selective gold in contact area, tin on tail | 8 Thickness of Plating 00-Gold Flash 05-5μ" Custom plate available | 9 Material-Resin 4-PA6T | 10 Color-Resin K6-Black | 11 Packaging K-Tray | |

| | | | | | | | |
|----------------------------|---------------------------------------|-----------------|---------------------|----------------------|---------------------------------|---|---------------------|
| THIRD ANGLE PROJECTION | GENERAL TOLERANCES (UNLESS SPECIFIED) | | APPROVE BY FRANK | DATE 22/AUG/13 | PART NO. FFH20002-DXXBXX4K6K | ITEM NO. FFH20002 | 3K-KAMING® |
| | DESIGN UNITS Inch (metric) | X.X±.012(0.30) | X.±5' | CHECKED BY CHERRY | DATE 22/AUG/13 | TITLE Board to Board (Female Header) Pitch 2.0mm 90° Angle (DIP) | |
| SCALE 5:1 | SIZE A4 | X.XX±.006(0.15) | .XX±1' | DRAWN BY JACOB | DATE 22/AUG/13 | THIS DRAWING CONTAINS INFORMATION THAT IS PROPRIETARY TO DONG GUAN LANG LUN(3K-KAMING) ELECTRONIC PRODUCTS CO.,LTD. AND SHOULD NOT BE USED WITHOUT WRITTEN PERMISSION | REV 0 SHEET NO. 1/2 |

| | | | | | |
|-----|-----------|-------------|------|---------|------|
| REV | LOCATIONS | DESCRIPTION | DATE | REVISER | APPD |
| | | | | | |



| Circuits (n) | Part No. | Dimensions(in/mm) | | Circuits (n) | Part No. | Dimensions(in/mm) | |
|-----------------|----------------------|-------------------|--------------|-----------------|----------------------|-------------------|--------------|
| | | A | B | | | A | B |
| 4 | FFH20002-D04BXXX4K6K | .079(2.00) | .177(4.50) | 44 | FFH20002-D44BXXX4K6K | 1.654(42.00) | 1.752(44.50) |
| 6 | FFH20002-D06BXXX4K6K | .157(4.00) | .256(6.50) | 46 | FFH20002-D46BXXX4K6K | 1.732(44.00) | 1.831(46.50) |
| 8 | FFH20002-D08BXXX4K6K | .236(6.00) | .335(8.50) | 48 | FFH20002-D48BXXX4K6K | 1.811(46.00) | 1.909(48.50) |
| 10 | FFH20002-D10BXXX4K6K | .315(8.00) | .413(10.50) | 50 | FFH20002-D50BXXX4K6K | 1.890(48.00) | 1.988(50.50) |
| 12 | FFH20002-D12BXXX4K6K | .394(10.00) | .492(12.50) | 52 | FFH20002-D52BXXX4K6K | 1.969(50.00) | 2.067(52.50) |
| 14 | FFH20002-D14BXXX4K6K | .472(12.00) | .571(14.50) | 54 | FFH20002-D54BXXX4K6K | 2.047(52.00) | 2.146(54.50) |
| 16 | FFH20002-D16BXXX4K6K | .551(14.00) | .650(16.50) | 56 | FFH20002-D56BXXX4K6K | 2.126(54.00) | 2.224(56.50) |
| 18 | FFH20002-D18BXXX4K6K | .630(16.00) | .728(18.50) | 58 | FFH20002-D58BXXX4K6K | 2.205(56.00) | 2.303(58.50) |
| 20 | FFH20002-D20BXXX4K6K | .709(18.00) | .807(20.50) | 60 | FFH20002-D60BXXX4K6K | 2.283(58.00) | 2.382(60.50) |
| 22 | FFH20002-D22BXXX4K6K | .787(20.00) | .886(22.50) | 62 | FFH20002-D62BXXX4K6K | 2.362(60.00) | 2.460(62.50) |
| 24 | FFH20002-D24BXXX4K6K | .866(22.00) | .965(24.50) | 64 | FFH20002-D64BXXX4K6K | 2.441(62.00) | 2.539(64.50) |
| 26 | FFH20002-D26BXXX4K6K | .845(24.00) | 1.043(26.50) | 66 | FFH20002-D66BXXX4K6K | 2.520(64.00) | 2.618(66.50) |
| 28 | FFH20002-D28BXXX4K6K | 1.024(26.00) | 1.122(28.50) | 68 | FFH20002-D68BXXX4K6K | 2.598(66.00) | 2.697(68.50) |
| 30 | FFH20002-D30BXXX4K6K | 1.102(28.00) | 1.201(30.50) | 70 | FFH20002-D70BXXX4K6K | 2.677(68.00) | 2.776(70.50) |
| 32 | FFH20002-D32BXXX4K6K | 1.181(30.00) | 1.280(32.50) | 72 | FFH20002-D72BXXX4K6K | 2.756(70.00) | 2.854(72.50) |
| 34 | FFH20002-D34BXXX4K6K | 1.260(32.00) | 1.358(34.50) | 74 | FFH20002-D74BXXX4K6K | 2.835(72.00) | 2.933(74.50) |
| 36 | FFH20002-D36BXXX4K6K | 1.339(34.00) | 1.437(36.50) | 76 | FFH20002-D76BXXX4K6K | 2.913(74.00) | 3.012(76.50) |
| 38 | FFH20002-D38BXXX4K6K | 1.417(36.00) | 1.516(38.50) | 78 | FFH20002-D78BXXX4K6K | 2.992(76.00) | 3.091(78.50) |
| 40 | FFH20002-D40BXXX4K6K | 1.496(38.00) | 1.594(40.50) | 80 | FFH20002-D80BXXX4K6K | 3.071(78.00) | 3.169(80.50) |
| 42 | FFH20002-D42BXXX4K6K | 1.575(40.00) | 1.673(42.50) | | | | |



| | | | | | | | |
|-------------------------------|--|------------------|----------------------|-------------------|--|----------------------|---------------|
| THIRD ANGLE PROJECTION | GENERAL TOLERANCES (UNLESS SPECIFIED) | | APPROVE BY FRANK | DATE 22/AUG/13 | PART NO. FFH20002-DXXBXXX4K6K | ITEM NO. FFH20002 | 3K-KAMING |
| | X.±.012(0.30) | X.±5' | CHECKED BY CHERRY | DATE 22/AUG/13 | TITLE Board to Board (Female Header) Pitch 2.00mm 90° Angle (DIP) | | |
| DESIGN UNITS Inch (metric) | X.X±.008(0.20) | .X'±2' | DRAWN BY JACOB | DATE 22/AUG/13 | THIS DRAWING CONTAINS INFORMATION THAT IS PROPRIETARY TO DONG GUAN LANG LUN(3K-KAMING) ELECTRONIC PRODUCTS CO.,LTD. AND SHOULD NOT BE USED WITHOUT WRITTEN PERMISSION | | |
| SCALE 5:1 | SIZE A4 | X.XX±.006(0.15) | | | | | |
| | | X.XXX±.004(0.10) | | | | | |