

Dimensions(in/mm)		
H	H1+H2	W
.118(3.00)	.059(1.50)+.059(1.50)	.134(3.40)
.138(3.50)	.059(1.50)+.059(1.50)	
.157(4.00)	.079(2.00)+.079(2.00)	.118(3.00)
.177(4.50)	.079(2.00)+.098(2.50)	
≧.197(5.00)	.098(2.50)+.098(2.50)	



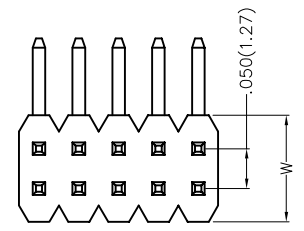
REV	LOCATIONS	DESCRIPTION	DATE	REVISER	APPD

SPECIFICATIONS

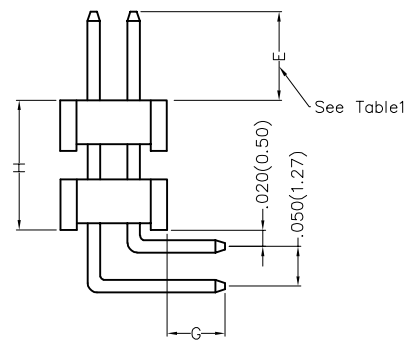
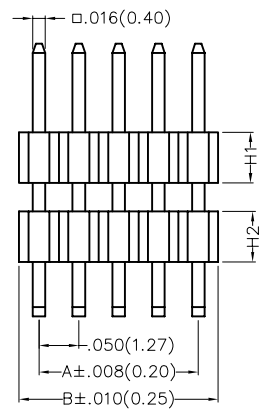
Electrical
 Current Rating:1.0A AC(rms)/DC
 Voltage Rating:250V AC(rms)/DC
 Contact Resistance:20 mΩ Max
 Insulation Resistance:1000 MΩ Min
 Withstanding Voltage:600V AC r.m.s
 Temperature Range-Operating:-40°C~+105°C

Material and Plating
 Housing:Glass Filled Polyester (UL 94V-0), Color: Black
 Pin:Brass
 Pin Plating: Gold plated/ Selective gold plated on contact area and 120μ" Min. matte tin plated on tails area

B



C

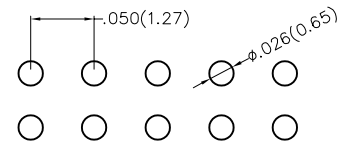


Ordering Information

FPH	127	35	-	D	XX	B	X	XX	4	XX	XX	XX	B
1	2	3		4	5	6	7	8	9	10	11	12	13

1 Category	2 Series Number	3 Distinction No.	4 Row Option	5 Circuits	6 Entry Angle	7 Plating
FPH-Pin Header	127-Pitch1.27mm	35	D-Double Row	XX	B-90° Angle	1-Gold plated 7-Selective gold plated on contact area and matte tin plated on tails area

8 Thickness of Plating	9 Material-Resin	10 E Size	11 G Size	12 H Size	13 Packaging
01-1μ" 15-15μ" Custom plate available	4-PA6T	01,02...-Serial number (See Table1)	01,02...-Serial number (See Table1)	01,02...-Serial number (See Table1)	B-PE Bag



Recommended P.C.Board Layout

 THIRD ANGLE PROJECTION	GENERAL TOLERANCES (UNLESS SPECIFIED)		APPROVE BY	DATE	PART NO.	ITEM NO.	 3K-KAMING REV 0 SHEET NO. 1/3
	X.±.012(0.30)	X.±5'	FRANK	17/DEC/19	FPH12735-DXXBXXX4XXXXXXB	FPH12735	
	DESIGN UNITS Inch (metric)	X.X±.008(0.20) .X'±2'	CHECKED BY	DATE	TITLE Board to Board(Pin Header) Pitch 1.27mm 90° Angle(DIP)		
	SCALE 5:1 SIZE AZ	X.XX±.006(0.15) .XX'±1'	CHERRY	17/DEC/19	THIS DRAWING CONTAINS INFORMATION THAT IS PROPRIETARY TO DONG GUAN LANG LUN(3K-KAMING) ELECTRONIC PRODUCTS CO.,LTD. AND SHOULD NOT BE USED WITHOUT WRITTEN PERMISSION		
	X.XXX±.004(0.10) .XXX'±0.5'	DRAWN BY	DATE	ZOEY	17/DEC/19		

F

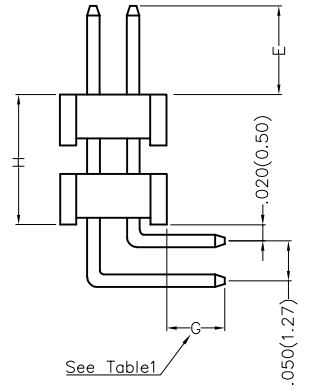
REV	LOCATIONS	DESCRIPTION	DATE	REVISER	APPD

Table1

Serial number	Dimensions (in/mm) E	Serial number	Dimensions (in/mm) E
01	.059(1.50)	19	.236(6.00)
02	.069(1.75)	20	.246(6.25)
03	.079(2.00)	21	.256(6.50)
04	.089(2.25)	22	.266(6.75)
05	.098(2.50)	23	.276(7.00)
06	.108(2.75)	24	.285(7.25)
07	.118(3.00)	25	.295(7.50)
08	.128(3.25)	26	.305(7.75)
09	.138(3.50)	27	.315(8.00)
10	.148(3.75)	28	.325(8.25)
11	.157(4.00)	29	.335(8.50)
12	.167(4.25)	30	.344(8.75)
13	.177(4.50)	31	.354(9.00)
14	.187(4.75)	32	.364(9.25)
15	.197(5.00)	33	.374(9.50)
16	.207(5.25)	34	.384(9.75)
17	.217(5.50)	35	.394(10.00)
18	.226(5.75)		

Serial number	Dimensions (in/mm) G	Serial number	Dimensions (in/mm) G
01	.059(1.50)	19	.236(6.00)
02	.069(1.75)	20	.246(6.25)
03	.079(2.00)	21	.256(6.50)
04	.089(2.25)	22	.266(6.75)
05	.098(2.50)	23	.276(7.00)
06	.108(2.75)	24	.285(7.25)
07	.118(3.00)	25	.295(7.50)
08	.128(3.25)	26	.305(7.75)
09	.138(3.50)	27	.315(8.00)
10	.148(3.75)	28	.325(8.25)
11	.157(4.00)	29	.335(8.50)
12	.167(4.25)	30	.344(8.75)
13	.177(4.50)	31	.354(9.00)
14	.187(4.75)	32	.364(9.25)
15	.197(5.00)	33	.374(9.50)
16	.207(5.25)	34	.384(9.75)
17	.217(5.50)	35	.394(10.00)
18	.226(5.75)		

Serial number	Dimensions (in/mm) H	Serial number	Dimensions (in/mm) H
01	.118(3.00)	19	.472(12.00)
02	.138(3.50)	20	.492(12.50)
03	.157(4.00)	21	.512(13.00)
04	.177(4.50)	22	.531(13.50)
05	.197(5.00)	23	.551(14.00)
06	.217(5.50)	24	.571(14.50)
07	.236(6.00)	25	.591(15.00)
08	.256(6.50)	26	.610(15.50)
09	.276(7.00)	27	.630(16.00)
10	.295(7.50)	28	.650(16.50)
11	.315(8.00)	29	.669(17.00)
12	.335(8.50)	30	.689(17.50)
13	.354(9.00)	31	.709(18.00)
14	.374(9.50)	32	.728(18.50)
15	.394(10.00)	33	.748(19.00)
16	.413(10.50)	34	.768(19.50)
17	.433(11.00)	35	.787(20.00)
18	.453(11.50)		



 THIRD ANGLE PROJECTION	GENERAL TOLERANCES (UNLESS SPECIFIED)		APPROVE BY FRANK	DATE 17/DEC/19	PART NO. FPH12735-DXXBXXX4XXXXXXB	ITEM NO. FPH12735	 3K-KAMING	
	X.±.012(0.30)	X.±5'	CHECKED BY CHERRY	DATE 17/DEC/19	TITLE Board to Board(Pin Header) Pitch 1.27mm 90° Angle(DIP)			
DESIGN UNITS Inch (metric)	X.X±.008(0.20)	X.±2'	DRAWN BY ZOEY	DATE 17/DEC/19	THIS DRAWING CONTAINS INFORMATION THAT IS PROPRIETARY TO DONG GUAN LANG LUN(3K-KAMING) ELECTRONIC PRODUCTS CO., LTD. AND SHOULD NOT BE USED WITHOUT WRITTEN PERMISSION		REV 0	SHEET NO. 2/3
SCALE 5:1	SIZE A<	X.XX±.006(0.15)						
		X.XXX±.004(0.10)						



REV	LOCATIONS	DESCRIPTION	DATE	REVISER	APPD

Circuits (n)	Part No.	Dimensions(in/mm)		Circuits (n)	Part No.	Dimensions(in/mm)	
		A	B			A	B
2	FPH12735-D02BXXX4XXXXXXB	—	.050(1.27)	42	FPH12735-D42BXXX4XXXXXXB	1.000(25.40)	1.050(26.67)
4	FPH12735-D04BXXX4XXXXXXB	.050(1.27)	.100(2.54)	44	FPH12735-D44BXXX4XXXXXXB	1.050(26.67)	1.100(27.94)
6	FPH12735-D06BXXX4XXXXXXB	.100(2.54)	.150(3.81)	46	FPH12735-D46BXXX4XXXXXXB	1.100(27.94)	1.150(29.21)
8	FPH12735-D08BXXX4XXXXXXB	.150(3.81)	.200(5.08)	48	FPH12735-D48BXXX4XXXXXXB	1.150(29.21)	1.200(30.48)
10	FPH12735-D10BXXX4XXXXXXB	.200(5.08)	.250(6.35)	50	FPH12735-D50BXXX4XXXXXXB	1.200(30.48)	1.250(31.75)
12	FPH12735-D12BXXX4XXXXXXB	.250(6.35)	.300(7.62)	52	FPH12735-D52BXXX4XXXXXXB	1.250(31.75)	1.300(33.02)
14	FPH12735-D14BXXX4XXXXXXB	.300(7.62)	.350(8.89)	54	FPH12735-D54BXXX4XXXXXXB	1.300(33.02)	1.350(34.29)
16	FPH12735-D16BXXX4XXXXXXB	.350(8.89)	.400(10.16)	56	FPH12735-D56BXXX4XXXXXXB	1.350(34.29)	1.400(35.56)
18	FPH12735-D18BXXX4XXXXXXB	.400(10.16)	.450(11.43)	58	FPH12735-D58BXXX4XXXXXXB	1.400(35.56)	1.450(36.83)
20	FPH12735-D20BXXX4XXXXXXB	.450(11.43)	.500(12.70)	60	FPH12735-D60BXXX4XXXXXXB	1.450(36.83)	1.500(38.10)
22	FPH12735-D22BXXX4XXXXXXB	.500(12.70)	.550(13.97)	62	FPH12735-D62BXXX4XXXXXXB	1.500(38.10)	1.550(39.37)
24	FPH12735-D24BXXX4XXXXXXB	.550(13.97)	.600(15.24)	64	FPH12735-D64BXXX4XXXXXXB	1.550(39.37)	1.600(40.64)
26	FPH12735-D26BXXX4XXXXXXB	.600(15.24)	.650(16.51)	66	FPH12735-D66BXXX4XXXXXXB	1.600(40.64)	1.650(41.91)
28	FPH12735-D28BXXX4XXXXXXB	.650(16.51)	.700(17.78)	68	FPH12735-D68BXXX4XXXXXXB	1.650(41.91)	1.700(43.18)
30	FPH12735-D30BXXX4XXXXXXB	.700(17.78)	.750(19.05)	70	FPH12735-D70BXXX4XXXXXXB	1.700(43.18)	1.750(44.45)
32	FPH12735-D32BXXX4XXXXXXB	.750(19.05)	.800(20.32)	72	FPH12735-D72BXXX4XXXXXXB	1.750(44.45)	1.800(45.72)
34	FPH12735-D34BXXX4XXXXXXB	.800(20.32)	.850(21.59)	74	FPH12735-D74BXXX4XXXXXXB	1.800(45.72)	1.850(46.99)
36	FPH12735-D36BXXX4XXXXXXB	.850(21.59)	.900(22.86)	76	FPH12735-D76BXXX4XXXXXXB	1.850(46.99)	1.900(48.26)
38	FPH12735-D38BXXX4XXXXXXB	.900(22.86)	.950(24.13)	78	FPH12735-D78BXXX4XXXXXXB	1.900(48.26)	1.950(49.53)
40	FPH12735-D40BXXX4XXXXXXB	.950(24.13)	1.00(25.40)	80	FPH12735-D80BXXX4XXXXXXB	1.950(49.53)	2.000(50.80)



 THIRD ANGLE PROJECTION	GENERAL TOLERANCES (UNLESS SPECIFIED)		APPROVE BY	DATE	PART NO.	ITEM NO.	 3K-KAMING	
	X.±.012(0.30)	X.±5'	FRANK	17/DEC/19	FPH12735-DXXBXXX4XXXXXXB	FPH12735		
	DESIGN UNITS Inch (metric)	X.X±.008(0.20)	.X±2'	CHECKED BY	DATE	TITLE		
	SCALE	X.XX±.006(0.15)	.XX±1'	CHERRY	17/DEC/19	Board to Board(Pin Header) Pitch 1.27mm 90° Angle(DIP)		
SIZE	X.XXX±.004(0.10)	.XXX±0.5'	DRAWN BY	DATE	THIS DRAWING CONTAINS INFORMATION THAT IS PROPRIETARY TO DONG GUAN LANG LUN(3K-KAMING) ELECTRONIC PRODUCTS CO., LTD. AND SHOULD NOT BE USED WITHOUT WRITTEN PERMISSION		REV 0	SHEET NO. 3/3
			ZOEY	17/DEC/19				