

Dimensions(in/mm)	
H	W
.039(1.00)	.079(2.00)
.059(1.50)	
.079(2.00)	.098(2.50)
.098(2.50)	

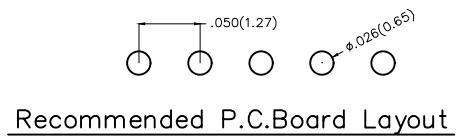
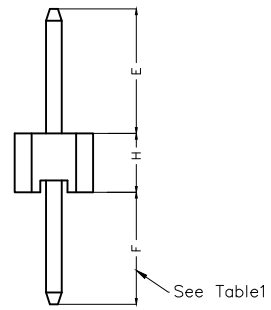
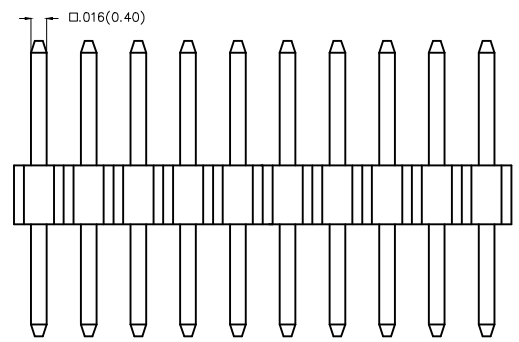
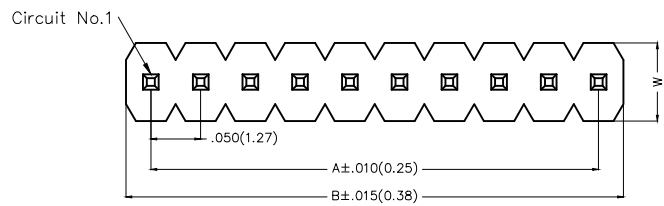
REV	LOCATIONS	DESCRIPTION	DATE	REVISER	APPD



**SPECIFICATIONS**

**Electrical**  
 Current Rating: 1.0A AC(rms)/DC  
 Voltage Rating: 250V AC(rms)/DC  
 Contact Resistance: 20 mΩ Max  
 Insulation Resistance: 1000 MΩ Min  
 Withstanding Voltage: 600V AC r.m.s  
 Temperature Range-Operating: -40°C~+105°C

**Material and Plating**  
 Housing: Glass Filled Polyester (UL 94V-0), Color: Black  
 Pin: Brass  
 Pin Plating: Gold plated/ Selective gold plated on contact area and 120μ" Min. matte tin plated on tails area



**Ordering Information**

FPH 127 28 - S XX S X XX 4 XX XX X 0 B  
 1 2 3 4 5 6 7 8 9 10 11 12 13

1   <u>Category</u> FPH-Pin Header	2   <u>Series Number</u> 127-Pitch1.27mm	3   <u>Distinction No.</u> 28	4   <u>Row Option</u> S-Single Row	5   <u>Circuits</u> XX	6   <u>Entry Angle</u> S-180° Vertical	7   <u>Plating</u> 1-Gold plated 7-Selective gold plated on contact area and matte tin plated on tails area
8   <u>Thickness of Plating</u> 01-1μ" 15-15μ" Custom plate available	9   <u>Material-Resin</u> 4-PA6T	10   <u>E Size</u> 01,02...-Serial number (See Table1)	11   <u>F Size</u> 01,02...-Serial number (See Table1)	12   <u>H Size</u> 1,2...-Serial number (See Table1)	13   <u>Packaging</u> B-PE Bag	



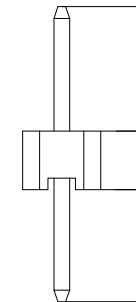
THIRD ANGLE PROJECTION	GENERAL TOLERANCES (UNLESS SPECIFIED)		APPROVE BY FRANK	DATE 16/DEC/19	PART NO. FPH12728-SXXSXX4XXXXX0B	ITEM NO. FPH12728	
	DESIGN UNITS Inch (metric)	X.±.012(0.30)	X.'±5'	CHECKED BY CHERRY	DATE 16/DEC/19	TITLE Board to Board(Pin Header) Pitch 1.27mm 180° Vertical(DIP)	
SCALE 5:1	SIZE A4	X.XX±.006(0.15)	X.X'±1'	DRAWN BY ZOEY	DATE 16/DEC/19	THIS DRAWING CONTAINS INFORMATION THAT IS PROPRIETARY TO DONG GUAN LANG LUN(3K-KAMING) ELECTRONIC PRODUCTS CO.,LTD. AND SHOULD NOT BE USED WITHOUT WRITTEN PERMISSION	

REV	LOCATIONS	DESCRIPTION	DATE	REVISER	APPD

A Table1

Serial number	Dimensions(in/mm)		Serial number	Dimensions(in/mm)	
	E			E	
01	.059(1.50)		19	.236(6.00)	
02	.069(1.75)		20	.246(6.25)	
03	.079(2.00)		21	.256(6.50)	
04	.089(2.25)		22	.266(6.75)	
05	.098(2.50)		23	.276(7.00)	
06	.108(2.75)		24	.285(7.25)	
07	.118(3.00)		25	.295(7.50)	
08	.128(3.25)		26	.305(7.75)	
09	.138(3.50)		27	.315(8.00)	
10	.148(3.75)		28	.325(8.25)	
11	.157(4.00)		29	.335(8.50)	
12	.167(4.25)		30	.344(8.75)	
13	.177(4.50)		31	.354(9.00)	
14	.187(4.75)		32	.364(9.25)	
15	.197(5.00)		33	.374(9.50)	
16	.207(5.25)		34	.384(9.75)	
17	.217(5.50)		35	.394(10.00)	
18	.226(5.75)				

Serial number	Dimensions(in/mm)		Serial number	Dimensions(in/mm)	
	F			F	
01	.059(1.50)		21	.256(6.50)	
02	.069(1.75)		22	.266(6.75)	
03	.079(2.00)		23	.276(7.00)	
04	.089(2.25)		24	.285(7.25)	
05	.098(2.50)		25	.295(7.50)	
06	.108(2.75)		26	.305(7.75)	
07	.118(3.00)		27	.315(8.00)	
08	.128(3.25)		28	.325(8.25)	
09	.138(3.50)		29	.335(8.50)	
10	.148(3.75)		30	.344(8.75)	
11	.157(4.00)		31	.354(9.00)	
12	.167(4.25)		32	.364(9.25)	
13	.177(4.50)		33	.374(9.50)	
14	.187(4.75)		34	.384(9.75)	
15	.197(5.00)		35	.394(10.00)	
16	.207(5.25)		36	.030(0.75)	
17	.217(5.50)		37	.039(1.00)	
18	.226(5.75)		38	.049(1.25)	
19	.236(6.00)				
20	.246(6.25)				



Serial number	Dimensions(in/mm)
H	
1	.039(1.00)
2	.059(1.50)
3	.079(2.00)
4	.098(2.50)



 THIRD ANGLE PROJECTION	GENERAL TOLERANCES (UNLESS SPECIFIED)		APPROVE BY FRANK	DATE 16/DEC/19	PART NO. FPH12728-SXXSXXX4XXXXX0B	ITEM NO. FPH12728	 3K-KAMING REV 0 SHEET NO. 2/3
	DESIGN UNITS Inch (metric)	X.±.012(0.30)	X.±5'	CHECKED BY CHERRY	DATE 16/DEC/19	TITLE Board to Board(Pin Header) Pitch 1.27mm 180° Vertical(DIP)	
	SCALE	X.XX±.008(0.20)	.X'±2'	DRAWN BY ZOEY	DATE 16/DEC/19	THIS DRAWING CONTAINS INFORMATION THAT IS PROPRIETARY TO DONG GUAN LANG LUN(3K-KAMING) ELECTRONIC PRODUCTS CO.,LTD. AND SHOULD NOT BE USED WITHOUT WRITTEN PERMISSION	
	SIZE 5:1 A4	X.XX±.006(0.15)	.XX'±1'				
	X.XXX±.004(0.10)	.XXX'±0.5'					

1 2 3 4 5 6 7 8

REV	LOCATIONS	DESCRIPTION	DATE	REVISER	APPD



Circuits (n)	Part No.	Dimensions(in/mm)		Circuits (n)	Part No.	Dimensions(in/mm)	
		A	B			A	B
1	FPH12728-S01SXXX4XXXXX0B	—	.050(1.27)	21	FPH12728-S21SXXX4XXXXX0B	1.000(25.40)	1.050(26.67)
2	FPH12728-S02SXXX4XXXXX0B	.050(1.27)	.100(2.54)	22	FPH12728-S22SXXX4XXXXX0B	1.050(26.67)	1.100(27.94)
3	FPH12728-S03SXXX4XXXXX0B	.100(2.54)	.150(3.81)	23	FPH12728-S23SXXX4XXXXX0B	1.100(27.94)	1.150(29.21)
4	FPH12728-S04SXXX4XXXXX0B	.150(3.81)	.200(5.08)	24	FPH12728-S24SXXX4XXXXX0B	1.150(29.21)	1.200(30.48)
5	FPH12728-S05SXXX4XXXXX0B	.200(5.08)	.250(6.35)	25	FPH12728-S25SXXX4XXXXX0B	1.200(30.48)	1.250(31.75)
6	FPH12728-S06SXXX4XXXXX0B	.250(6.35)	.300(7.62)	26	FPH12728-S26SXXX4XXXXX0B	1.250(31.75)	1.300(33.02)
7	FPH12728-S07SXXX4XXXXX0B	.300(7.62)	.350(8.89)	27	FPH12728-S27SXXX4XXXXX0B	1.300(33.02)	1.350(34.29)
8	FPH12728-S08SXXX4XXXXX0B	.350(8.89)	.400(10.16)	28	FPH12728-S28SXXX4XXXXX0B	1.350(34.29)	1.400(35.56)
9	FPH12728-S09SXXX4XXXXX0B	.400(10.16)	.450(11.43)	29	FPH12728-S29SXXX4XXXXX0B	1.400(35.56)	1.450(36.83)
10	FPH12728-S10SXXX4XXXXX0B	.450(11.43)	.500(12.70)	30	FPH12728-S30SXXX4XXXXX0B	1.450(36.83)	1.500(38.10)
11	FPH12728-S11SXXX4XXXXX0B	.500(12.70)	.550(13.97)	31	FPH12728-S31SXXX4XXXXX0B	1.500(38.10)	1.550(39.37)
12	FPH12728-S12SXXX4XXXXX0B	.550(13.97)	.600(15.24)	32	FPH12728-S32SXXX4XXXXX0B	1.550(39.37)	1.600(40.64)
13	FPH12728-S13SXXX4XXXXX0B	.600(15.24)	.650(16.51)	33	FPH12728-S33SXXX4XXXXX0B	1.600(40.64)	1.650(41.91)
14	FPH12728-S14SXXX4XXXXX0B	.650(16.51)	.700(17.78)	34	FPH12728-S34SXXX4XXXXX0B	1.650(41.91)	1.700(43.18)
15	FPH12728-S15SXXX4XXXXX0B	.700(17.78)	.750(19.05)	35	FPH12728-S35SXXX4XXXXX0B	1.700(43.18)	1.750(44.45)
16	FPH12728-S16SXXX4XXXXX0B	.750(19.05)	.800(20.32)	36	FPH12728-S36SXXX4XXXXX0B	1.750(44.45)	1.800(45.72)
17	FPH12728-S17SXXX4XXXXX0B	.800(20.32)	.850(21.59)	37	FPH12728-S37SXXX4XXXXX0B	1.800(45.72)	1.850(46.99)
18	FPH12728-S18SXXX4XXXXX0B	.850(21.59)	.900(22.86)	38	FPH12728-S38SXXX4XXXXX0B	1.850(46.99)	1.900(48.26)
19	FPH12728-S19SXXX4XXXXX0B	.900(22.86)	.950(24.13)	39	FPH12728-S39SXXX4XXXXX0B	1.900(48.26)	1.950(49.53)
20	FPH12728-S20SXXX4XXXXX0B	.950(24.13)	1.00(25.40)	40	FPH12728-S40SXXX4XXXXX0B	1.950(49.53)	2.000(50.80)



<p>THIRD ANGLE PROJECTION</p>	GENERAL TOLERANCES (UNLESS SPECIFIED)		APPROVE BY	DATE	PART NO.	ITEM NO.	<p>3K-KAMING</p>	
	X.±.012(0.30)	.X'±5'	FRANK	16/DEC/19				FPH12728-SXXXSXXX4XXXXX0B
	DESIGN UNITS Inch (metric)	X.X±.008(0.20)	.X'±2'	CHECKED BY	DATE	TITLE		
	SCALE	X.XX±.006(0.15)	.XX'±1'	CHERRY	16/DEC/19	Board to Board(Pin Header) Pitch 1.27mm 180° Vertical(DIP)		
SIZE	X.XXX±.004(0.10)	.XXX'±0.5'	DRAWN BY	DATE	THIS DRAWING CONTAINS INFORMATION THAT IS PROPRIETARY TO DONG GUAN LANG LUN(3K-KAMING) ELECTRONIC PRODUCTS CO.,LTD. AND SHOULD NOT BE USED WITHOUT WRITTEN PERMISSION		REV 0	SHEET NO. 3/3
5:1	A4		ZOEY	16/DEC/19				

1 2 3 4 5 6 7 8