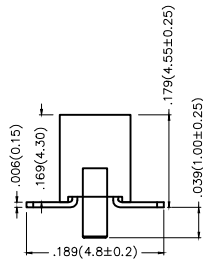
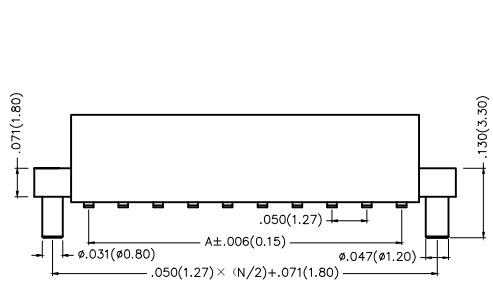
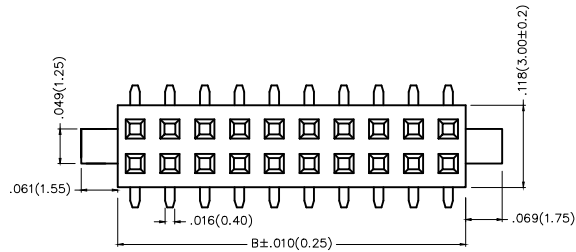


REV	LOCATIONS	DESCRIPTION	DATE	REVISER	APPD

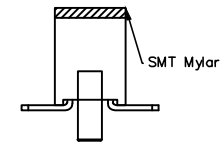
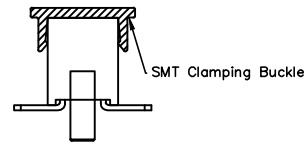


Electrical
 Current Rating: 1A AC(rms)/DC
 Voltage Rating: 250V AC(rms)/DC
 Contact Resistance: 20 mΩ Max
 Insulation Resistance: 500 MΩ MIN
 Withstanding Voltage: 100V AC r.m.s
 Temperature Range-Operating: -25°C~+85°C
 Material and Plating
 Housing: PA6T(UL 94V-0)
 Contact Pin: Brass
 Plating: Gold Plated/Selective gold in contact area, tin on tail



Packing: M-Reel(With Cap)

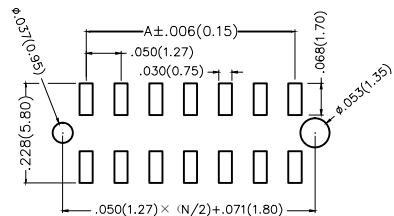
Packing: M1-Reel(With Mylar)



Ordering Information

FFH 127 16 - D XX S 1 XX 4 K6 XX
 1 2 3 4 5 6 7 8 9 10 11

1 <u>Category</u> FFH-Female Header	2 <u>Series Number</u> 127-Pitch1.27mm	3 <u>Distinction No.</u> 16	4 <u>Row Option</u> D-Double Row	5 <u>Circuits</u> XX	6 <u>Entry Angle</u> S-180° Vertical
7 <u>Plating</u> 1-Gold Plated 3-Selective gold in contact area, tin on tail	8 <u>Thickness of Plating</u> 00-Gold Flash 05-5μ" Custom plate available	9 <u>Material-Resin</u> 4-PA6T	10 <u>Color-Resin</u> K6-Black	11 <u>Packaging</u> M-Reel(With Cap) M1-Reel(With Mylar)	



Recommended P.C.Board Layout

 THIRD ANGLE PROJECTION	GENERAL TOLERANCES (UNLESS SPECIFIED)		APPROVE BY FRANK	DATE 10/JUL/13	PART NO. FFH12716-DXXSXX4K6XX	ITEM NO. FFH12716	 3K-KAMING®
	DESIGN UNITS Inch (metric)	X.X±.012(0.30) X.X±.008(0.20)	X.±5° .X'±2°	CHECKED BY CHERRY	DATE 10/JUL/13	TITLE Board to Board (Female Header) Pitch 1.27mm 180° Vertical (SMT)	
SCALE 5:1	SIZE A4	X.XX±.006(0.15) X.XXX±.004(0.10)	.XX'±1° .XXX'±0.5°	DRAWN BY JACOB	DATE 10/JUL/13	THIS DRAWING CONTAINS INFORMATION THAT IS PROPRIETARY TO DONG GUAN LANG LUN(3K-KAMING) ELECTRONIC PRODUCTS CO.,LTD. AND SHOULD NOT BE USED WITHOUT WRITTEN PERMISSION	REV 0 SHEET NO. 1/2

REV	LOCATIONS	DESCRIPTION	DATE	REVISER	APPD



Circuits (n)	Part No.	Dimensions(in/mm)		Circuits (n)	Part No.	Dimensions(in/mm)	
		A	B			A	B
8	FFH12716-D08SXXX4K6XX	.150(3.81)	.218(5.53)	46	FFH12716-D46SXXX4K6XX	1.100(27.94)	1.168(29.66)
10	FFH12716-D10SXXX4K6XX	.200(5.08)	.268(6.80)	48	FFH12716-D48SXXX4K6XX	1.150(29.21)	1.218(30.93)
12	FFH12716-D12SXXX4K6XX	.250(6.35)	.318(8.07)	50	FFH12716-D50SXXX4K6XX	1.200(30.48)	1.268(32.20)
14	FFH12716-D14SXXX4K6XX	.300(7.62)	.368(9.34)	52	FFH12716-D52SXXX4K6XX	1.250(31.75)	1.318(33.47)
16	FFH12716-D16SXXX4K6XX	.350(8.89)	.418(10.61)	54	FFH12716-D54SXXX4K6XX	1.300(33.02)	1.368(34.74)
18	FFH12716-D18SXXX4K6XX	.400(10.16)	.468(11.88)	56	FFH12716-D56SXXX4K6XX	1.350(34.29)	1.418(36.01)
20	FFH12716-D20SXXX4K6XX	.450(11.43)	.518(13.15)	58	FFH12716-D58SXXX4K6XX	1.400(35.56)	1.468(37.28)
22	FFH12716-D22SXXX4K6XX	.500(12.70)	.567(14.42)	60	FFH12716-D60SXXX4K6XX	1.450(36.83)	1.518(38.55)
24	FFH12716-D24SXXX4K6XX	.550(13.97)	.617(15.69)	62	FFH12716-D62SXXX4K6XX	1.500(38.10)	1.568(39.82)
26	FFH12716-D26SXXX4K6XX	.600(15.24)	.668(16.96)	64	FFH12716-D64SXXX4K6XX	1.550(39.37)	1.618(41.09)
28	FFH12716-D28SXXX4K6XX	.650(16.51)	.718(18.23)	66	FFH12716-D66SXXX4K6XX	1.600(40.64)	1.668(42.36)
30	FFH12716-D30SXXX4K6XX	.700(17.78)	.768(19.50)	68	FFH12716-D68SXXX4K6XX	1.650(41.91)	1.718(43.63)
32	FFH12716-D32SXXX4K6XX	.750(19.05)	.818(20.77)	70	FFH12716-D70SXXX4K6XX	1.700(43.18)	1.768(44.90)
34	FFH12716-D34SXXX4K6XX	.800(20.32)	.868(22.04)	72	FFH12716-D72SXXX4K6XX	1.750(44.45)	1.818(46.17)
36	FFH12716-D36SXXX4K6XX	.850(21.59)	.918(23.31)	74	FFH12716-D74SXXX4K6XX	1.800(45.72)	1.868(47.44)
38	FFH12716-D38SXXX4K6XX	.900(22.86)	.968(24.58)	76	FFH12716-D76SXXX4K6XX	1.850(46.99)	1.918(48.71)
40	FFH12716-D40SXXX4K6XX	.950(24.13)	1.018(25.85)	78	FFH12716-D78SXXX4K6XX	1.900(48.26)	1.968(49.98)
42	FFH12716-D42SXXX4K6XX	1.000(25.40)	1.068(27.12)	80	FFH12716-D80SXXX4K6XX	1.950(49.53)	2.033(51.65)
44	FFH12716-D44SXXX4K6XX	1.050(26.67)	1.118(28.39)	100	FFH12716-D100SXXX4K6XX	2.450(62.23)	2.518(63.95)



 THIRD ANGLE PROJECTION	GENERAL TOLERANCES (UNLESS SPECIFIED)		APPROVE BY	DATE	ITEM NO.	 3K-KAMING
	X.±0.12(0.30)	X.±5'	FRANK	10/JUL/13	FFH12716-DXXSXXX4K6XX	
DESIGN UNITS Inch (metric)	X.X±0.08(0.20)	.X'±2'	CHECKED BY	DATE	TITLE	REV 0
SCALE	X.XX±.006(0.15)	.XX'±1'	CHERRY	10/JUL/13	Board to Board (Female Header) Pitch 1.27mm 180° Vertical (SMT)	SHEET NO. 2/2
SIZE	X.XXX±.004(0.10)	.XXX'±0.5'	DRAWN BY	DATE	THIS DRAWING CONTAINS INFORMATION THAT IS PROPRIETARY TO DONG GUAN LANG LUN(3K-KAMING) ELECTRONIC PRODUCTS CO.,LTD. AND SHOULD NOT BE USED WITHOUT WRITTEN PERMISSION	
5:1	A4		JACOB	10/JUL/13		