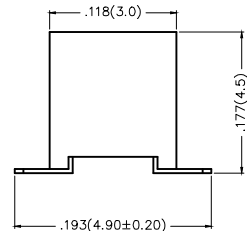
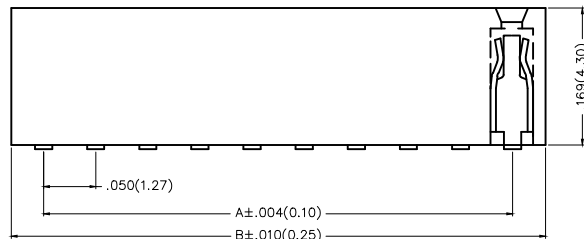
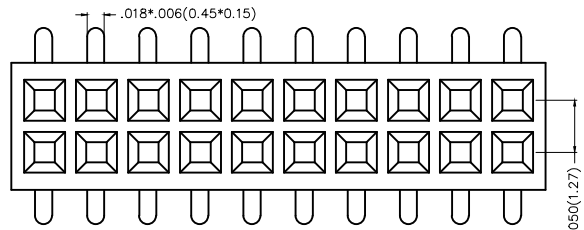


REV	LOCATIONS	DESCRIPTION	DATE	REVISER	APPD

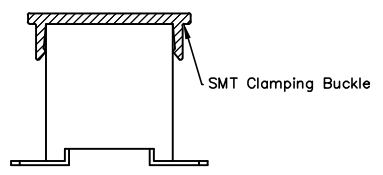


Electrical  
 Current Rating: 1A AC(rms)/DC  
 Voltage Rating: 250V AC(rms)/DC  
 Contact Resistance: 20 mΩ Max  
 Insulation Resistance: 500 MΩ MIN  
 Withstanding Voltage: 100V AC r.m.s  
 Temperature Range—Operating: -25°C~+85°C

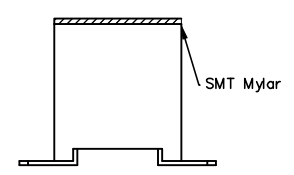
Material and Plating  
 Housing: LCP/PA6T( UL 94V-0)  
 Contact Pin: Brass  
 Plating: Gold Plated/Selective gold in contact area, tin on tail



Packing: M—Reel(With Cap)



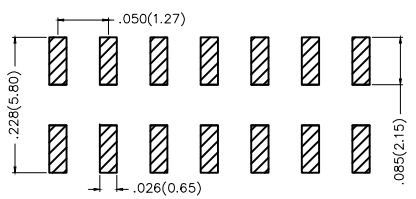
Packing: M1—Reel(With Mylar)



Ordering Information

FFH 127 13 — D XX S X XX X K6 XX  
 1 2 3 4 5 6 7 8 9 10 11

1 Category FFH—Female Header	2 Series Number 127—Pitch1.27mm	3 Distinction No. 13	4 Row Option D—Double Row	5 Circuits XX	6 Entry Angle S=180° Vertical
7 Plating 1—Gold Plated 3—Selective gold in contact area, tin on tail	8 Thickness of Plating 00—Gold Flash 05—5μ" Custom plate available	9 Material—Resin 3—LCP 4—PA6T 5—PA9T	10 Color—Resin K6—Black	11 Packaging M—Reel(With Cap) M1—Reel(With Mylar) L—Tube	



Recommended P.C.Board Layout

THIRD ANGLE PROJECTION	GENERAL TOLERANCES (UNLESS SPECIFIED)		APPROVE BY FRANK	DATE 10/JUL/13	PART NO. FFH12713-DXXSXXXXK6XX	ITEM NO. FFH12713	
	DESIGN UNITS Inch (metric)	X.±.012(0.30) X.X±.010(0.25) X.XX±.008(0.20) X.XXX±.004(0.10)	X'.±5' .X'±2' .XX'±1' .XXX'±0.5'	CHECKED BY CHERRY	DATE 10/JUL/13	TITLE Board to Board (Female Header) Pitch 1.27mm 180° Vertical (SMT)	
SCALE 5:1	SIZE A4	DRAWN BY JACOB		DATE 10/JUL/13	THIS DRAWING CONTAINS INFORMATION THAT IS PROPRIETARY TO DONG GUAN LANG LUN(3K-KAMING) ELECTRONIC PRODUCTS CO., LTD. AND SHOULD NOT BE USED WITHOUT WRITTEN PERMISSION		



REV	LOCATIONS	DESCRIPTION	DATE	REVISER	APPD

Circuits (n)	Part No.	Dimensions(in/mm)	
		A	B
6	FFH12713-D06SXXXXK6XX	.100(2.54)	.164(4.16)
8	FFH12713-D08SXXXXK6XX	.150(3.81)	.214(5.43)
10	FFH12713-D10SXXXXK6XX	.200(5.08)	.264(6.70)
12	FFH12713-D12SXXXXK6XX	.250(6.35)	.314(7.97)
14	FFH12713-D14SXXXXK6XX	.300(7.62)	.364(9.24)
16	FFH12713-D16SXXXXK6XX	.350(8.89)	.414(10.51)
18	FFH12713-D18SXXXXK6XX	.400(10.16)	.464(11.78)
20	FFH12713-D20SXXXXK6XX	.450(11.43)	.514(13.05)
22	FFH12713-D22SXXXXK6XX	.500(12.70)	.564(14.32)
24	FFH12713-D24SXXXXK6XX	.550(13.97)	.614(15.59)
26	FFH12713-D26SXXXXK6XX	.600(15.24)	.664(16.86)
28	FFH12713-D28SXXXXK6XX	.650(16.51)	.714(18.13)
30	FFH12713-D30SXXXXK6XX	.700(17.78)	.764(19.40)
32	FFH12713-D32SXXXXK6XX	.750(19.05)	.814(20.67)
34	FFH12713-D34SXXXXK6XX	.800(20.32)	.864(21.94)
36	FFH12713-D36SXXXXK6XX	.850(21.59)	.914(23.21)
38	FFH12713-D38SXXXXK6XX	.900(22.86)	.964(24.48)
40	FFH12713-D40SXXXXK6XX	.950(24.13)	1.014(25.75)
42	FFH12713-D42SXXXXK6XX	1.000(25.40)	1.064(27.02)
44	FFH12713-D44SXXXXK6XX	1.050(26.67)	1.114(28.29)
46	FFH12713-D46SXXXXK6XX	1.100(27.94)	1.164(29.56)
48	FFH12713-D48SXXXXK6XX	1.150(29.21)	1.214(30.83)
50	FFH12713-D50SXXXXK6XX	1.200(30.48)	1.264(32.10)
52	FFH12713-D52SXXXXK6XX	1.250(31.75)	1.314(33.37)

Circuits (n)	Part No.	Dimensions(in/mm)	
		A	B
54	FFH12713-D54SXXXXK6XX	1.300(33.02)	1.364(34.64)
56	FFH12713-D56SXXXXK6XX	1.350(34.29)	1.414(35.91)
58	FFH12713-D58SXXXXK6XX	1.400(35.56)	1.464(37.18)
60	FFH12713-D60SXXXXK6XX	1.450(36.83)	1.514(38.45)
62	FFH12713-D62SXXXXK6XX	1.500(38.10)	1.564(39.72)
64	FFH12713-D64SXXXXK6XX	1.550(39.37)	1.614(40.99)
66	FFH12713-D66SXXXXK6XX	1.600(40.64)	1.664(42.26)
68	FFH12713-D68SXXXXK6XX	1.650(41.91)	1.714(43.53)
70	FFH12713-D70SXXXXK6XX	1.700(43.18)	1.764(44.80)
72	FFH12713-D72SXXXXK6XX	1.750(44.45)	1.814(46.07)
74	FFH12713-D74SXXXXK6XX	1.800(45.72)	1.864(47.34)
76	FFH12713-D76SXXXXK6XX	1.850(46.99)	1.914(48.61)
78	FFH12713-D78SXXXXK6XX	1.900(48.26)	1.964(49.88)
80	FFH12713-D80SXXXXK6XX	1.950(49.53)	2.014(51.55)
82	FFH12713-D82SXXXXK6XX	2.000(50.80)	2.064(52.42)
84	FFH12713-D84SXXXXK6XX	2.050(52.07)	2.114(53.69)
86	FFH12713-D86SXXXXK6XX	2.100(53.34)	2.164(54.69)
88	FFH12713-D88SXXXXK6XX	2.150(54.61)	2.214(56.23)
90	FFH12713-D90SXXXXK6XX	2.200(55.88)	2.264(57.50)
92	FFH12713-D92SXXXXK6XX	2.250(57.15)	2.314(58.77)
94	FFH12713-D94SXXXXK6XX	2.300(58.42)	2.364(60.04)
96	FFH12713-D96SXXXXK6XX	2.350(59.69)	2.414(61.31)
98	FFH12713-D98SXXXXK6XX	2.400(60.96)	2.464(62.58)
100	FFH12713-D100SXXXXK6XX	2.450(62.23)	2.514(63.85)



 THIRD ANGLE PROJECTION	GENERAL TOLERANCES (UNLESS SPECIFIED)		APPROVE BY FRANK	DATE 10/JUL/13	PART NO. FFH12713-DXXSXXXXK6XX	ITEM NO. FFH12713	 3K-KAMING	
	X.±.012(0.30)	X.±5'	CHECKED BY CHERRY	DATE 10/JUL/13	TITLE Board to Board (Female Header) Pitch 1.27mm 180° Vertical (SMT)			REV 0
	DESIGN UNITS Inch (metric)	X.X±.010(0.25)	.X±2'	DRAWN BY JACOB	DATE 10/JUL/13	THIS DRAWING CONTAINS INFORMATION THAT IS PROPRIETARY TO DONG GUAN LANG LUN(3K-KAMING) ELECTRONIC PRODUCTS CO.,LTD. AND SHOULD NOT BE USED WITHOUT WRITTEN PERMISSON		
	SCALE 5:1	SIZE A4	X.XX±.008(0.20)	.XX±1'	X.XXX±.004(0.10)	.XX±0.5'		

REV	LOCATIONS	DESCRIPTION	DATE	REVISER	APPD
1	△	Change the positioning column	02/June/15	KEVIN	FRANK
2	△	Part No. FFH12714 Change to FFH12713A	02/Sep/15	CHERRY	FRANK
3	△	Size changes	13/MAY/20	KATE	CHERRY

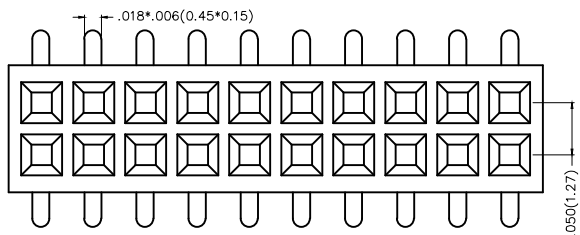


Electrical

Current Rating: 1A AC(rms)/DC  
Voltage Rating: 250V AC(rms)/DC  
Contact Resistance: 20 mΩ Max  
Insulation Resistance: 500 MΩ MIN  
Withstanding Voltage: 100V AC r.m.s  
Temperature Range—Operating: -40°C~+105°C

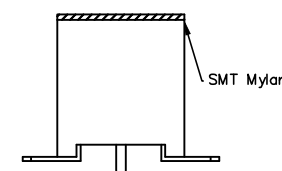
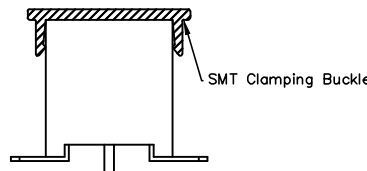
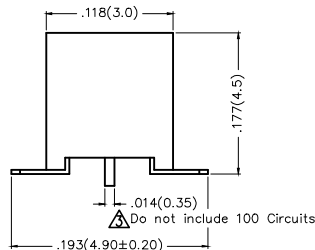
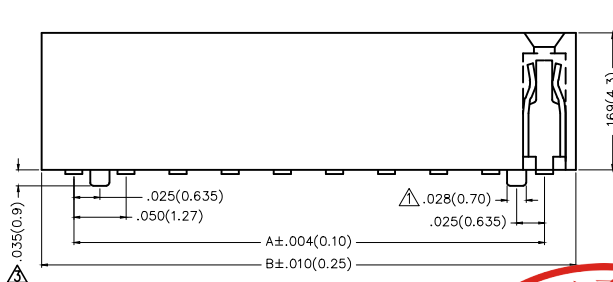
Material and Plating

Housing: LCP/PA6T( UL 94V-0)  
Contact Pin: Brass  
Plating: Gold plated/ Selective gold plated on contact area and 120μ" Min. matte tin plated on tails area



Packing: M—Reel(With Cap)

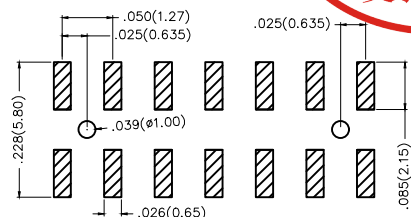
Packing: M1—Reel(With Mylar)



Ordering Information

FFH 127 13 — D XX S X XX 4 K6 XX A  
1 2 3 4 5 6 7 8 9 10 11 12

1 Category FFH—Female Header	2 Series Number 127—Pitch1.27mm	3 Distinction No. 13	4 Row Option D—Double Row	5 Circuits XX	6 Entry Angle S—180° Vertical
7 Plating 1—Gold plated 7—Selective gold plated on contact area and matte tin plated on tails area	8 Thickness of Plating 00—Gold Flash 05—5μ" Custom plate available	9 Material—Resin 3—LCP 4—PA6T 5—PA9T	10 Color—Resin K6—Black	11 Packaging M—Reel(With Cap) M1—Reel(With Mylar) L—Tube	12 Type A—With Position



Recommended P.C.Board Layout

THIRD ANGLE PROJECTION	GENERAL TOLERANCES (UNLESS SPECIFIED)		APPROVE BY FRANK	DATE 10/JUL/13	PART NO. △ FFH12713-DXXSXXX4K6XXA	ITEM NO. FFH12713	
	X.±.012(0.30)	X.±5'	CHECKED BY CHERRY	DATE 10/JUL/13	TITLE Board to Board (Female Header) Pitch 1.27mm 180° Vertical (SMT)	REV 3	
DESIGN UNITS Inch (metric)	X.X±.010(0.25)	.X'±2'	DRAWN BY JACOB	DATE 10/JUL/13	THIS DRAWING CONTAINS INFORMATION THAT IS PROPRIETARY TO DONG GUAN LANG LUN(3K-KAMING) ELECTRONIC PRODUCTS CO., LTD. AND SHOULD NOT BE USED WITHOUT WRITTEN PERMISSION		
SCALE 5:1	SIZE A4	X.XX±.008(0.20)					
		X.XXX±.004(0.10)					

REV	LOCATIONS	DESCRIPTION	DATE	REVISER	APPD



Circuits (n)	Part No. $\Delta$	Dimensions(in/mm)		Circuits (n)	Part No. $\Delta$	Dimensions(in/mm)	
		A	B			A	B
8	FFH12713-D08SXXXXK6XXA	.150(3.81)	.214(5.43)	46	FFH12713-D46SXXXXK6XXA	1.100(27.94)	1.164(29.56)
10	FFH12713-D10SXXXXK6XXA	.200(5.08)	.264(6.70)	48	FFH12713-D48SXXXXK6XXA	1.150(29.21)	1.214(30.83)
12	FFH12713-D12SXXXXK6XXA	.250(6.35)	.314(7.97)	50	FFH12713-D50SXXXXK6XXA	1.200(30.48)	1.264(32.10)
14	FFH12713-D14SXXXXK6XXA	.300(7.62)	.364(9.24)	52	FFH12713-D52SXXXXK6XXA	1.250(31.75)	1.314(33.37)
16	FFH12713-D16SXXXXK6XXA	.350(8.89)	.414(10.51)	54	FFH12713-D54SXXXXK6XXA	1.300(33.02)	1.364(34.64)
18	FFH12713-D18SXXXXK6XXA	.400(10.16)	.464(11.78)	56	FFH12713-D56SXXXXK6XXA	1.350(34.29)	1.414(35.91)
20	FFH12713-D20SXXXXK6XXA	.450(11.43)	.514(13.05)	58	FFH12713-D58SXXXXK6XXA	1.400(35.56)	1.464(37.18)
22	FFH12713-D22SXXXXK6XXA	.500(12.70)	.564(14.32)	60	FFH12713-D60SXXXXK6XXA	1.450(36.83)	1.514(38.45)
24	FFH12713-D24SXXXXK6XXA	.550(13.97)	.614(15.59)	62	FFH12713-D62SXXXXK6XXA	1.500(38.10)	1.564(39.72)
26	FFH12713-D26SXXXXK6XXA	.600(15.24)	.664(16.86)	64	FFH12713-D64SXXXXK6XXA	1.550(39.37)	1.614(40.99)
28	FFH12713-D28SXXXXK6XXA	.650(16.51)	.714(18.13)	66	FFH12713-D66SXXXXK6XXA	1.600(40.64)	1.664(42.26)
30	FFH12713-D30SXXXXK6XXA	.700(17.78)	.764(19.40)	68	FFH12713-D68SXXXXK6XXA	1.650(41.91)	1.714(43.53)
32	FFH12713-D32SXXXXK6XXA	.750(19.05)	.814(20.67)	70	FFH12713-D70SXXXXK6XXA	1.700(43.18)	1.764(44.80)
34	FFH12713-D34SXXXXK6XXA	.800(20.32)	.864(21.94)	72	FFH12713-D72SXXXXK6XXA	1.750(44.45)	1.814(46.07)
36	FFH12713-D36SXXXXK6XXA	.850(21.59)	.914(23.21)	74	FFH12713-D74SXXXXK6XXA	1.800(45.72)	1.864(47.34)
38	FFH12713-D38SXXXXK6XXA	.900(22.86)	.964(24.48)	76	FFH12713-D76SXXXXK6XXA	1.850(46.99)	1.914(48.61)
40	FFH12713-D40SXXXXK6XXA	.950(24.13)	1.014(25.75)	78	FFH12713-D78SXXXXK6XXA	1.900(48.26)	1.964(49.88)
42	FFH12713-D42SXXXXK6XXA	1.000(25.40)	1.064(27.02)	80	FFH12713-D80SXXXXK6XXA	1.950(49.53)	2.014(51.55)
44	FFH12713-D44SXXXXK6XXA	1.050(26.67)	1.114(28.29)	100	FFH12713-D100SXXXXK6XXA	2.450(62.23)	2.514(63.85)



 THIRD ANGLE PROJECTION	GENERAL TOLERANCES (UNLESS SPECIFIED)		APPROVE BY	DATE	PART NO. $\Delta$ FFH12713-DXXSXXX4K6XXA	ITEM NO. FFH12713	 3K-KAMING		
	X.±.012(0.30)	X.±5'	FRANK	10/JUL/13					
	DESIGN UNITS Inch (metric)	X.X±.010(0.25)	X.±2'	CHECKED BY	DATE	TITLE		REV 3	SHEET NO. 2/2
	SCALE	SIZE	X.XX±.008(0.20)	CHERRY	10/JUL/13	Board to Board (Female Header) Pitch 1.27mm 180° Vertical (SMT)			
5:1	A4	X.XXX±.004(0.10)	DRAWN BY	DATE	THIS DRAWING CONTAINS INFORMATION THAT IS PROPRIETARY TO DONG GUAN LANG LUN(3K-KAMING) ELECTRONIC PRODUCTS CO.,LTD. AND SHOULD NOT BE USED WITHOUT WRITTEN PERMISSION				
		X.XX±1'	JACOB	10/JUL/13					