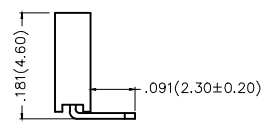
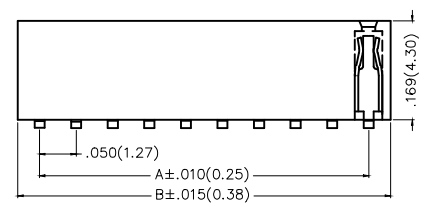
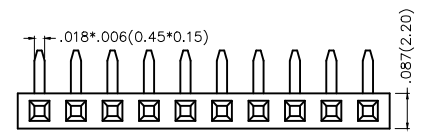


| REV | LOCATIONS | DESCRIPTION | DATE | REVISER | APPD |
|-----|-----------|-------------|------|---------|------|
| | | | | | |



Electrical
 Current Rating: 1A AC(rms)/DC
 Voltage Rating: 250V AC(rms)/DC
 Contact Resistance: 20 mΩ Max
 Insulation Resistance: 500 MΩ MIN
 Withstanding Voltage: 100V AC r.m.s
 Temperature Range—Operating: -25°C~+85°C

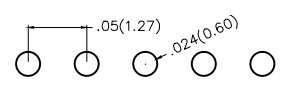
Material and Plating
 Housing: PA6T(UL 94V-0)
 Contact Pin: Phosphor Bronze
 Plating: Gold Plated



Ordering Information

FFH 127 12 — S XX B X XX 4 K6 K
 1 2 3 4 5 6 7 8 9 10 11

| | | | | | |
|---|---|----------------------------|------------------------------|------------------------|------------------------------|
| 1 Category FFH—Female Header | 2 Series Number 127—Pitch1.27mm | 3 Distinction No. 12 | 4 Row Option S—Single row | 5 Circuits XX | 6 Entry Angle B—90° Angle |
| 7 Plating 1—Gold Plated 3—Selective gold in contact area, matte(bright) tin on tail | 8 Thickness of Plating 00—Gold Flash 05—5μ" Custom plate available | 9 Material—Resin 4—PA6T | 10 Color—Resin K6—Black | 11 Packaging K—Tray | |



Recommended P.C.Board Layout

| | | | | | | | |
|----------------------------|---------------------------------------|-------------------------------------|-----------------------|----------------------|----------------------------------|---|----------------|
| THIRD ANGLE PROJECTION | GENERAL TOLERANCES (UNLESS SPECIFIED) | | APPROVE BY FRANK | DATE 10/JUL/13 | PART NO. FFH12712-SXXBXXX4K6K | ITEM NO. FFH12712 | 3K-KAMING® |
| | DESIGN UNITS Inch (metric) | X.±.012(0.30) X.X±.008(0.20) | X.±5° .X'±2° | CHECKED BY CHERRY | DATE 10/JUL/13 | TITLE Board to Board (Female Header) Pitch 1.27mm 90° Angle (DIP) | |
| SCALE 5:1 | SIZE A4 | X.XX±.006(0.15) X.XXX±.004(0.10) | .XX'±1° .XXX'±0.5° | DRAWN BY JACOB | DATE 10/JUL/13 | THIS DRAWING CONTAINS INFORMATION THAT IS PROPRIETARY TO DONG GUAN LANG LUN(3K-KAMING) ELECTRONIC PRODUCTS CO.,LTD. AND SHOULD NOT BE USED WITHOUT WRITTEN PERMISSION | |

REV 0 SHEET NO. 1/1

| | | | | | |
|-----|-----------|-------------|------|---------|------|
| REV | LOCATIONS | DESCRIPTION | DATE | REVISER | APPD |
| | | | | | |



| Circuits (n) | Part No. | Dimensions(in/mm) | | Circuits (n) | Part No. | Dimensions(in/mm) | |
|-----------------|----------------------|-------------------|--------------|-----------------|----------------------|-------------------|--------------|
| | | A | B | | | A | B |
| 2 | FFH12712-S02BXXX4K6K | .050(1.27) | .114(2.89) | 22 | FFH12712-S22BXXX4K6K | 1.050(26.67) | 1.114(28.29) |
| 3 | FFH12712-S03BXXX4K6K | .100(2.54) | .164(4.16) | 23 | FFH12712-S23BXXX4K6K | 1.100(27.94) | 1.164(29.56) |
| 4 | FFH12712-S04BXXX4K6K | .150(3.81) | .214(5.43) | 24 | FFH12712-S24BXXX4K6K | 1.150(29.21) | 1.214(30.83) |
| 5 | FFH12712-S05BXXX4K6K | .200(5.08) | .264(6.70) | 25 | FFH12712-S25BXXX4K6K | 1.200(30.48) | 1.264(32.10) |
| 6 | FFH12712-S06BXXX4K6K | .250(6.35) | .314(7.97) | 26 | FFH12712-S26BXXX4K6K | 1.250(31.75) | 1.314(33.37) |
| 7 | FFH12712-S07BXXX4K6K | .300(7.62) | .364(9.24) | 27 | FFH12712-S27BXXX4K6K | 1.300(33.02) | 1.364(34.64) |
| 8 | FFH12712-S08BXXX4K6K | .350(8.89) | .414(10.51) | 28 | FFH12712-S28BXXX4K6K | 1.350(34.29) | 1.414(35.91) |
| 9 | FFH12712-S09BXXX4K6K | .400(10.16) | .464(11.78) | 29 | FFH12712-S29BXXX4K6K | 1.400(35.56) | 1.464(37.18) |
| 10 | FFH12712-S10BXXX4K6K | .450(11.43) | .514(13.05) | 30 | FFH12712-S30BXXX4K6K | 1.450(36.83) | 1.514(38.45) |
| 11 | FFH12712-S11BXXX4K6K | .500(12.70) | .564(14.32) | 31 | FFH12712-S31BXXX4K6K | 1.500(38.10) | 1.564(39.72) |
| 12 | FFH12712-S12BXXX4K6K | .550(13.97) | .614(15.59) | 32 | FFH12712-S32BXXX4K6K | 1.550(39.37) | 1.614(40.99) |
| 13 | FFH12712-S13BXXX4K6K | .600(15.24) | .664(16.86) | 33 | FFH12712-S33BXXX4K6K | 1.600(40.64) | 1.664(42.26) |
| 14 | FFH12712-S14BXXX4K6K | .650(16.51) | .714(18.13) | 34 | FFH12712-S34BXXX4K6K | 1.650(41.91) | 1.714(43.53) |
| 15 | FFH12712-S15BXXX4K6K | .700(17.78) | .764(19.40) | 35 | FFH12712-S35BXXX4K6K | 1.700(43.18) | 1.764(44.80) |
| 16 | FFH12712-S16BXXX4K6K | .750(19.05) | .814(20.67) | 36 | FFH12712-S36BXXX4K6K | 1.750(44.45) | 1.814(46.07) |
| 17 | FFH12712-S17BXXX4K6K | .800(20.32) | .864(21.94) | 37 | FFH12712-S37BXXX4K6K | 1.800(45.72) | 1.864(47.34) |
| 18 | FFH12712-S18BXXX4K6K | .850(21.59) | .914(23.21) | 38 | FFH12712-S38BXXX4K6K | 1.850(46.99) | 1.914(48.61) |
| 19 | FFH12712-S19BXXX4K6K | .900(22.86) | .964(24.48) | 39 | FFH12712-S39BXXX4K6K | 1.900(48.26) | 1.964(49.88) |
| 20 | FFH12712-S20BXXX4K6K | .950(24.13) | 1.014(25.75) | 40 | FFH12712-S40BXXX4K6K | 1.950(49.53) | 2.014(51.55) |
| 21 | FFH12712-S21BXXX4K6K | 1.000(25.40) | 1.064(27.02) | | | | |



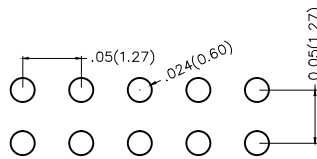
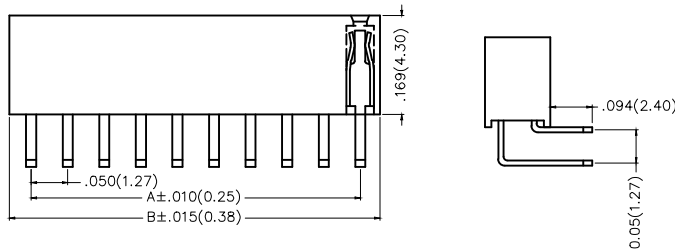
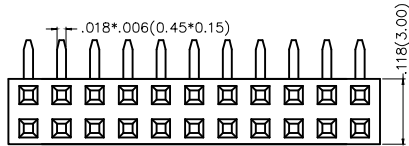
| | | | | | | | | |
|---|--|---------------|---------------------|----------------------|----------------------------------|---|----------------|-------------------|
| THIRD ANGLE PROJECTION | GENERAL TOLERANCES (UNLESS SPECIFIED) | | APPROVE BY FRANK | DATE 10/JUL/13 | PART NO. FFH12712-SXXBXXX4K6K | ITEM NO. FFH12712 | 3K-KAMING® | |
| | DESIGN UNITS Inch (metric) | X.±.012(0.30) | X.±5' | CHECKED BY CHERRY | DATE 10/JUL/13 | TITLE Board to Board (Female Header) Pitch 1.27mm 90° Angle (DIP) | | |
| | | SCALE 5:1 | SIZE A4 | X.XX±.006(0.15) | .XX±1' | DRAWN BY JACOB | | DATE 10/JUL/13 |
| THIS DRAWING CONTAINS INFORMATION THAT IS PROPRIETARY TO DONG GUAN LANG LUN(3K-KAMING) ELECTRONIC PRODUCTS CO.,LTD. AND SHOULD NOT BE USED WITHOUT WRITTEN PERMISSION | | | | | | | | |

| REV | LOCATIONS | DESCRIPTION | DATE | REVISER | APPD |
|-----|-----------|-------------|------|---------|------|
| | | | | | |



Electrical
 Current Rating: 1A AC(rms)/DC
 Voltage Rating: 250V AC(rms)/DC
 Contact Resistance: 20 mΩ Max
 Insulation Resistance: 500 MΩ MIN
 Withstanding Voltage: 100V AC r.m.s
 Temperature Range—Operating: -25°C~+85°C

Material and Plating
 Housing: PA6T(UL 94V-0)
 Contact Pin: Phosphor Bronze
 Plating: Gold Plated



Recommended P.C.Board Layout



Ordering Information

FFH 127 12 - D XX B X XX 4 K6 K
 1 2 3 4 5 6 7 8 9 10 11

| | | | | | |
|---|---|----------------------------|------------------------------|------------------------|------------------------------|
| 1 Category FFH—Female Header | 2 Series Number 127—Pitch1.27mm | 3 Distinction No. 12 | 4 Row Option D—Double Row | 5 Circuits XX | 6 Entry Angle B—90° Angle |
| 7 Plating 1—Gold Plated 3—Selective gold in contact area, matte(bright) tin on tail | 8 Thickness of Plating 00—Gold Flash 05—5μ" Custom plate available | 9 Material—Resin 4—PA6T | 10 Color—Resin K6—Black | 11 Packaging K—Tray | |

| | | | | | | | | |
|----------------------------|---------------------------------------|-------------------------------------|---------------------|----------------------|----------------------------------|---|----------------|-------|
| THIRD ANGLE PROJECTION | GENERAL TOLERANCES (UNLESS SPECIFIED) | | APPROVE BY FRANK | DATE 10/JUL/13 | PART NO. FFH12712-DXXBXXX4K6K | ITEM NO. FFH12712 | 3K-KAMING® | |
| | DESIGN UNITS Inch (metric) | X.±.012(0.30) X.X±.008(0.20) | X.±5° .X±2° | CHECKED BY CHERRY | DATE 10/JUL/13 | TITLE Board to Board (Female Header) Pitch 1.27mm 90° Angle (DIP) | | REV 0 |
| SCALE 5:1 | SIZE A4 | X.XX±.006(0.15) X.XXX±.004(0.10) | .XX±1° .XXX±0.5° | DRAWN BY JACOB | DATE 10/JUL/13 | THIS DRAWING CONTAINS INFORMATION THAT IS PROPRIETARY TO DONG GUAN LANG LUN(3K-KAMING) ELECTRONIC PRODUCTS CO.,LTD. AND SHOULD NOT BE USED WITHOUT WRITTEN PERMISSION | | |

| | | | | | |
|-----|-----------|-------------|------|---------|------|
| REV | LOCATIONS | DESCRIPTION | DATE | REVISER | APPD |
| | | | | | |



| Circuits (n) | Part No. | Dimensions(in/mm) | | Circuits (n) | Part No. | Dimensions(in/mm) | |
|--------------|----------------------|-------------------|--------------|--------------|----------------------|-------------------|--------------|
| | | A | B | | | A | B |
| 4 | FFH12712-D04BXXX4K6K | .050(1.27) | .114(2.89) | 44 | FFH12712-D44BXXX4K6K | 1.050(26.67) | 1.114(28.29) |
| 6 | FFH12712-D06BXXX4K6K | .100(2.54) | .164(4.16) | 46 | FFH12712-D46BXXX4K6K | 1.100(27.94) | 1.164(29.56) |
| 8 | FFH12712-D08BXXX4K6K | .150(3.81) | .214(5.43) | 48 | FFH12712-D48BXXX4K6K | 1.150(29.21) | 1.214(30.83) |
| 10 | FFH12712-D10BXXX4K6K | .200(5.08) | .264(6.70) | 50 | FFH12712-D50BXXX4K6K | 1.200(30.48) | 1.264(32.10) |
| 12 | FFH12712-D12BXXX4K6K | .250(6.35) | .314(7.97) | 52 | FFH12712-D52BXXX4K6K | 1.250(31.75) | 1.314(33.37) |
| 14 | FFH12712-D14BXXX4K6K | .300(7.62) | .364(9.24) | 54 | FFH12712-D54BXXX4K6K | 1.300(33.02) | 1.364(34.64) |
| 16 | FFH12712-D16BXXX4K6K | .350(8.89) | .414(10.51) | 56 | FFH12712-D56BXXX4K6K | 1.350(34.29) | 1.414(35.91) |
| 18 | FFH12712-D18BXXX4K6K | .400(10.16) | .464(11.78) | 58 | FFH12712-D58BXXX4K6K | 1.400(35.56) | 1.464(37.18) |
| 20 | FFH12712-D20BXXX4K6K | .450(11.43) | .514(13.05) | 60 | FFH12712-D60BXXX4K6K | 1.450(36.83) | 1.514(38.45) |
| 22 | FFH12712-D22BXXX4K6K | .500(12.70) | .564(14.32) | 62 | FFH12712-D62BXXX4K6K | 1.500(38.10) | 1.564(39.72) |
| 24 | FFH12712-D24BXXX4K6K | .550(13.97) | .614(15.59) | 64 | FFH12712-D64BXXX4K6K | 1.550(39.37) | 1.614(40.99) |
| 26 | FFH12712-D26BXXX4K6K | .600(15.24) | .664(16.86) | 66 | FFH12712-D66BXXX4K6K | 1.600(40.64) | 1.664(42.26) |
| 28 | FFH12712-D28BXXX4K6K | .650(16.51) | .714(18.13) | 68 | FFH12712-D68BXXX4K6K | 1.650(41.91) | 1.714(43.53) |
| 30 | FFH12712-D30BXXX4K6K | .700(17.78) | .764(19.40) | 70 | FFH12712-D70BXXX4K6K | 1.700(43.18) | 1.764(44.80) |
| 32 | FFH12712-D32BXXX4K6K | .750(19.05) | .814(20.67) | 72 | FFH12712-D72BXXX4K6K | 1.750(44.45) | 1.814(46.07) |
| 34 | FFH12712-D34BXXX4K6K | .800(20.32) | .864(21.94) | 74 | FFH12712-D74BXXX4K6K | 1.800(45.72) | 1.864(47.34) |
| 36 | FFH12712-D36BXXX4K6K | .850(21.59) | .914(23.21) | 76 | FFH12712-D76BXXX4K6K | 1.850(46.99) | 1.914(48.61) |
| 38 | FFH12712-D38BXXX4K6K | .900(22.86) | .964(24.48) | 78 | FFH12712-D78BXXX4K6K | 1.900(48.26) | 1.964(49.88) |
| 40 | FFH12712-D40BXXX4K6K | .950(24.13) | 1.014(25.75) | 80 | FFH12712-D80BXXX4K6K | 1.950(49.53) | 2.014(51.55) |
| 42 | FFH12712-D42BXXX4K6K | 1.000(25.40) | 1.064(27.02) | | | | |



| | | | | | | | |
|-------------------------------|---------------------------------------|------------|------------|-----------|--|----------------------|---------------------|
| THIRD ANGLE PROJECTION | GENERAL TOLERANCES (UNLESS SPECIFIED) | | APPROVE BY | DATE | PART NO. FFH12712-DXXBXXX4K6K | ITEM NO. FFH12712 | 3K-KAMING |
| | X.±0.12(0.30) | X.±5' | FRANK | 10/JUL/13 | | | |
| DESIGN UNITS Inch (metric) | X.X±.008(0.20) | .X'±2' | CHECKED BY | DATE | TITLE Board to Board (Female Header) Pitch 1.27mm 90° Angle (DIP) | | REV 0 SHEET NO. 1/1 |
| SCALE | X.XX±.006(0.15) | .XX'±1' | CHERRY | 10/JUL/13 | THIS DRAWING CONTAINS INFORMATION THAT IS PROPRIETARY TO DONG GUAN LANG LUN(3K-KAMING) ELECTRONIC PRODUCTS CO., LTD. AND SHOULD NOT BE USED WITHOUT WRITTEN PERMISSION | | |
| 5:1 | X.XXX±.004(0.10) | .XXX'±0.5' | DRAWN BY | DATE | | | |
| A4 | | | JACOB | 10/JUL/13 | | | |