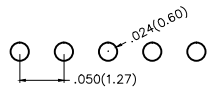
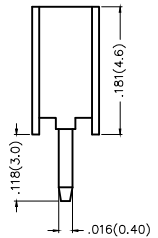
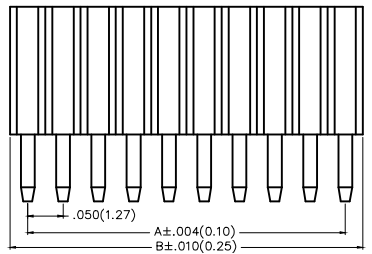
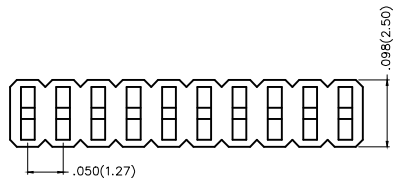


REV	LOCATIONS	DESCRIPTION	DATE	REVISER	APPD



Electrical
 Current Rating: 1A AC(rms)/DC
 Voltage Rating: 250V AC(rms)/DC
 Contact Resistance: 20 mΩ Max
 Insulation Resistance: 500 MΩ MIN
 Withstanding Voltage: 100V AC r.m.s
 Temperature Range—Operating: -25°C~+85°C

Material and Plating
 Housing: PA6T(UL 94V-0)
 Contact Pin: Brass
 Plating: Gold Plated/Selective gold in contact area, matte(bright) tin on tail



Recommended P.C.Board Layout

Ordering Information

FFH 127 06 — S XX S X XX 4 K6 X
 1 2 3 4 5 6 7 8 9 10 11

1 Category FFH—Female Header	2 Series Number 127—Pitch1.27mm	3 Distinction No. 06	4 Row Option S—Single row	5 Circuits XX	6 Entry Angle S—180° Vertical
7 Plating 1—Gold Plated 3—Selective gold in contact area, matte(bright) tin on tail	8 Thickness of Plating 00—Gold Flash 05—5μ Custom plate available	9 Material—Resin 4—PA6T	10 Color—Resin K6—Black	11 Packaging K—Tray L—Tube	



THIRD ANGLE PROJECTION	GENERAL TOLERANCES (UNLESS SPECIFIED)		APPROVE BY FRANK	DATE 10/JUL/13	PART NO. FFH12706-SXXSXXX4K6X	ITEM NO. FFH12706	
	DESIGN UNITS Inch (metric)	X.X±.012(0.30) X.X±.010(0.25)	X.±5° X.±2°	CHECKED BY CHERRY	DATE 10/JUL/13	TITLE Board to Board (Female Header) Pitch 1.27mm 180° Vertical (DIP)	
SCALE 5:1	SIZE A4	X.XX±.008(0.20) X.XXX±.004(0.10)	DRAWN BY JACOB	DATE 10/JUL/13	THIS DRAWING CONTAINS INFORMATION THAT IS PROPRIETARY TO DONG GUAN LANG LUN(3K-KAMLING) ELECTRONIC PRODUCTS CO., LTD. AND SHOULD NOT BE USED WITHOUT WRITTEN PERMISSION		

REV	LOCATIONS	DESCRIPTION	DATE	REVISER	APPD



Circuits (n)	Part No.	Dimensions(in/mm)		Circuits (n)	Part No.	Dimensions(in/mm)	
		A	B			A	B
2	FFH12706-S02SXXX4K6X	.050(1.27)	.094(2.39)	22	FFH12706-S22SXXX4K6X	1.050(26.67)	1.094(27.79)
3	FFH12706-S03SXXX4K6X	.100(2.54)	.144(3.66)	23	FFH12706-S23SXXX4K6X	1.100(27.94)	1.144(29.06)
4	FFH12706-S04SXXX4K6X	.150(3.81)	.194(4.93)	24	FFH12706-S24SXXX4K6X	1.150(29.21)	1.194(30.33)
5	FFH12706-S05SXXX4K6X	.200(5.08)	.244(6.20)	25	FFH12706-S25SXXX4K6X	1.200(30.48)	1.244(31.60)
6	FFH12706-S06SXXX4K6X	.250(6.35)	.294(7.47)	26	FFH12706-S26SXXX4K6X	1.250(31.75)	1.294(32.87)
7	FFH12706-S07SXXX4K6X	.300(7.62)	.344(8.74)	27	FFH12706-S27SXXX4K6X	1.300(33.02)	1.344(34.14)
8	FFH12706-S08SXXX4K6X	.350(8.89)	.394(10.01)	28	FFH12706-S28SXXX4K6X	1.350(34.29)	1.394(35.41)
9	FFH12706-S09SXXX4K6X	.400(10.16)	.444(11.28)	29	FFH12706-S29SXXX4K6X	1.400(35.56)	1.444(36.68)
10	FFH12706-S10SXXX4K6X	.450(11.43)	.494(12.55)	30	FFH12706-S30SXXX4K6X	1.450(36.83)	1.494(37.95)
11	FFH12706-S11SXXX4K6X	.500(12.70)	.544(13.82)	31	FFH12706-S31SXXX4K6X	1.500(38.10)	1.544(39.22)
12	FFH12706-S12SXXX4K6X	.550(13.97)	.594(15.09)	32	FFH12706-S32SXXX4K6X	1.550(39.37)	1.594(40.49)
13	FFH12706-S13SXXX4K6X	.600(15.24)	.644(16.36)	33	FFH12706-S33SXXX4K6X	1.600(40.64)	1.644(41.76)
14	FFH12706-S14SXXX4K6X	.650(16.51)	.694(17.63)	34	FFH12706-S34SXXX4K6X	1.650(41.91)	1.694(43.03)
15	FFH12706-S15SXXX4K6X	.700(17.78)	.744(18.90)	35	FFH12706-S35SXXX4K6X	1.700(43.18)	1.744(44.30)
16	FFH12706-S16SXXX4K6X	.750(19.05)	.794(20.17)	36	FFH12706-S36SXXX4K6X	1.750(44.45)	1.794(45.57)
17	FFH12706-S17SXXX4K6X	.800(20.32)	.844(21.44)	37	FFH12706-S37SXXX4K6X	1.800(45.72)	1.844(46.84)
18	FFH12706-S18SXXX4K6X	.850(21.59)	.894(22.71)	38	FFH12706-S38SXXX4K6X	1.850(46.99)	1.894(48.11)
19	FFH12706-S19SXXX4K6X	.900(22.86)	.944(23.98)	39	FFH12706-S39SXXX4K6X	1.900(48.26)	1.944(49.38)
20	FFH12706-S20SXXX4K6X	.950(24.13)	.994(25.25)	40	FFH12706-S40SXXX4K6X	1.950(49.53)	2.010(51.05)
21	FFH12706-S21SXXX4K6X	1.000(25.40)	1.044(26.52)				



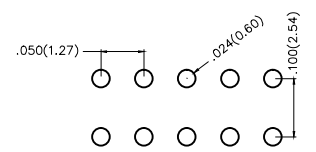
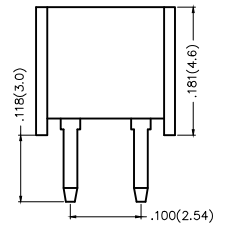
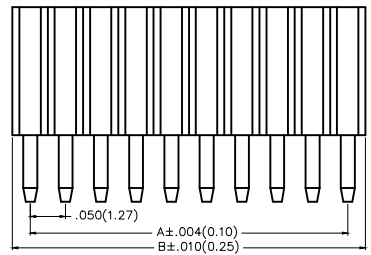
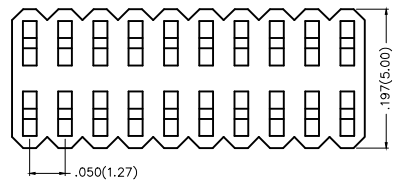
 THIRD ANGLE PROJECTION	GENERAL TOLERANCES (UNLESS SPECIFIED)		APPROVE BY FRANK	DATE 10/JUL/13	PART NO. FFH12706-SXXXSXXX4K6X	ITEM NO. FFH12706	 3K-KAMING®
	X.±.012(0.30)	X.±5'	CHECKED BY CHERRY	DATE 10/JUL/13	TITLE Board to Board (Female Header) Pitch 1.27mm 180° Vertical (DIP)	REV 0	
DESIGN UNITS Inch (metric)	X.X±.010(0.25)	.X'±2'	DRAWN BY JACOB	DATE 10/JUL/13	THIS DRAWING CONTAINS INFORMATION THAT IS PROPRIETARY TO DONG GUAN LANG LUN(3K-KAMING) ELECTRONIC PRODUCTS CO.,LTD. AND SHOULD NOT BE USED WITHOUT WRITTEN PERMISSION		
SCALE 5:1	SIZE A4	X.XX±.008(0.20)					
		X.XXX±.004(0.10)					

REV	LOCATIONS	DESCRIPTION	DATE	REVISER	APPD



Electrical
 Current Rating: 1A AC(rms)/DC
 Voltage Rating: 250V AC(rms)/DC
 Contact Resistance: 20 mΩ Max
 Insulation Resistance: 500 MΩ MIN
 Withstanding Voltage: 100V AC r.m.s
 Temperature Range—Operating: -25°C~+85°C

Material and Plating
 Housing: PA6T(UL 94V-0)
 Contact Pin: Brass
 Plating: Gold Plated/Selective gold in contact area, matte(bright) tin on tail



Recommended P.C.Board Layout



Ordering Information

FFH 127 06 — D XX S X XX 4 K6 X
 1 2 3 4 5 6 7 8 9 10 11

1 <u>Category</u> FFH—Female Header	2 <u>Series Number</u> 127—Pitch1.27mm	3 <u>Distinction No.</u> 06	4 <u>Row Option</u> D—Double Row	5 <u>Circuits</u> XX	6 <u>Entry Angle</u> S—180° Vertical
7 <u>Plating</u> 1—Gold Plated 3—Selective gold in contact area, matte(bright) tin on tail	8 <u>Thickness of Plating</u> 00—Gold Flash 05—5μ" Custom plate available	9 <u>Material—Resin</u> 4—PA6T	10 <u>Color—Resin</u> K6—Black	11 <u>Packaging</u> K—Tray L—Tube	

 THIRD ANGLE PROJECTION	GENERAL TOLERANCES (UNLESS SPECIFIED)		APPROVE BY FRANK	DATE 10/JUL/13	PART NO. FFH12706-DXXSXXX4K6X	ITEM NO. FFH12706	 3K-KAMLING®	
	DESIGN UNITS Inch (metric)	X.±.012(0.30) X.X±.010(0.25)	X.±5° .X±2°	CHECKED BY CHERRY	DATE 10/JUL/13	TITLE Board to Board (Female Header) Pitch 1.27mm 180° Vertical (DIP)		REV 0
SCALE 5:1	SIZE A4	X.XX±.008(0.20) X.XXX±.004(0.10)	.XX±1° .XXX±0.5°	DRAWN BY JACOB	DATE 10/JUL/13	THIS DRAWING CONTAINS INFORMATION THAT IS PROPRIETARY TO DONG GUAN LANG LUN(3K-KAMLING) ELECTRONIC PRODUCTS CO.,LTD. AND SHOULD NOT BE USED WITHOUT WRITTEN PERMISSION		

REV	LOCATIONS	DESCRIPTION	DATE	REVISER	APPD



Circuits (n)	Part No.	Dimensions(in/mm)		Circuits (n)	Part No.	Dimensions(in/mm)	
		A	B			A	B
4	FFH12706-D04SXXX4K6X	.050(1.27)	.094(2.39)	44	FFH12706-D44SXXX4K6X	1.050(26.67)	1.094(27.79)
6	FFH12706-D06SXXX4K6X	.100(2.54)	.144(3.66)	46	FFH12706-D46SXXX4K6X	1.100(27.94)	1.144(29.06)
8	FFH12706-D08SXXX4K6X	.150(3.81)	.194(4.93)	48	FFH12706-D48SXXX4K6X	1.150(29.21)	1.194(30.33)
10	FFH12706-D10SXXX4K6X	.200(5.08)	.244(6.20)	50	FFH12706-D50SXXX4K6X	1.200(30.48)	1.244(31.60)
12	FFH12706-D12SXXX4K6X	.250(6.35)	.294(7.47)	52	FFH12706-D52SXXX4K6X	1.250(31.75)	1.294(32.87)
14	FFH12706-D14SXXX4K6X	.300(7.62)	.344(8.74)	54	FFH12706-D54SXXX4K6X	1.300(33.02)	1.344(34.14)
16	FFH12706-D16SXXX4K6X	.350(8.89)	.394(10.01)	56	FFH12706-D56SXXX4K6X	1.350(34.29)	1.394(35.41)
18	FFH12706-D18SXXX4K6X	.400(10.16)	.444(11.28)	58	FFH12706-D58SXXX4K6X	1.400(35.56)	1.444(36.68)
20	FFH12706-D20SXXX4K6X	.450(11.43)	.494(12.55)	60	FFH12706-D60SXXX4K6X	1.450(36.83)	1.494(37.95)
22	FFH12706-D22SXXX4K6X	.500(12.70)	.544(13.82)	62	FFH12706-D62SXXX4K6X	1.500(38.10)	1.544(39.22)
24	FFH12706-D24SXXX4K6X	.550(13.97)	.594(15.09)	64	FFH12706-D64SXXX4K6X	1.550(39.37)	1.594(40.49)
26	FFH12706-D26SXXX4K6X	.600(15.24)	.644(16.36)	66	FFH12706-D66SXXX4K6X	1.600(40.64)	1.644(41.76)
28	FFH12706-D28SXXX4K6X	.650(16.51)	.694(17.63)	68	FFH12706-D68SXXX4K6X	1.650(41.91)	1.694(43.03)
30	FFH12706-D30SXXX4K6X	.700(17.78)	.744(18.90)	70	FFH12706-D70SXXX4K6X	1.700(43.18)	1.744(44.30)
32	FFH12706-D32SXXX4K6X	.750(19.05)	.794(20.17)	72	FFH12706-D72SXXX4K6X	1.750(44.45)	1.794(45.57)
34	FFH12706-D34SXXX4K6X	.800(20.32)	.844(21.44)	74	FFH12706-D74SXXX4K6X	1.800(45.72)	1.844(46.84)
36	FFH12706-D36SXXX4K6X	.850(21.59)	.894(22.71)	76	FFH12706-D76SXXX4K6X	1.850(46.99)	1.894(48.11)
38	FFH12706-D38SXXX4K6X	.900(22.86)	.944(23.98)	78	FFH12706-D78SXXX4K6X	1.900(48.26)	1.944(49.38)
40	FFH12706-D40SXXX4K6X	.950(24.13)	.994(25.25)	80	FFH12706-D80SXXX4K6X	1.950(49.53)	2.010(51.05)
42	FFH12706-D42SXXX4K6X	1.000(25.40)	1.044(26.52)				



 THIRD ANGLE PROJECTION	GENERAL TOLERANCES (UNLESS SPECIFIED)		APPROVE BY	DATE	PART NO.	ITEM NO.	 3K-KAMLING	
	X.±0.12(0.30)	X.±5'	FRANK	10/JUL/13	FFH12706-DXXSXXX4K6X	FFH12706		
	DESIGN UNITS Inch (metric)		CHECKED BY	DATE	TITLE			
SCALE 5:1	SIZE A4	X.XX±.008(0.20)	CHERRY	10/JUL/13	Board to Board (Female Header) Pitch 1.27mm 180° Vertical (DIP)		REV 0	SHEET NO. 2/2
		X.XXX±.004(0.10)	JACOB	10/JUL/13	THIS DRAWING CONTAINS INFORMATION THAT IS PROPRIETARY TO DONG GUAN LANG LUN(3K-KAMING) ELECTRONIC PRODUCTS CO.,LTD. AND SHOULD NOT BE USED WITHOUT WRITTEN PERMISSION			