

1 2 3 4 5 6 7 8

Dimensions(in/mm)	
H	H1+H2
.118(3.00)	.059(1.50)+.059(1.50)
.138(3.50)	.059(1.50)+.079(2.00)
.157(4.00)	.079(2.00)+.079(2.00)
.177(4.50)	.079(2.00)+.098(2.50)
≥.197(5.00)	.098(2.50)+.098(2.50)

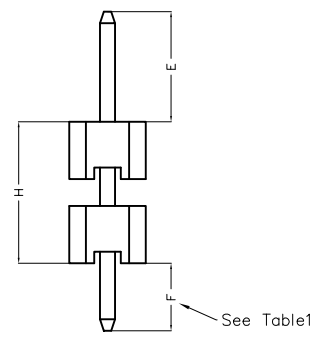
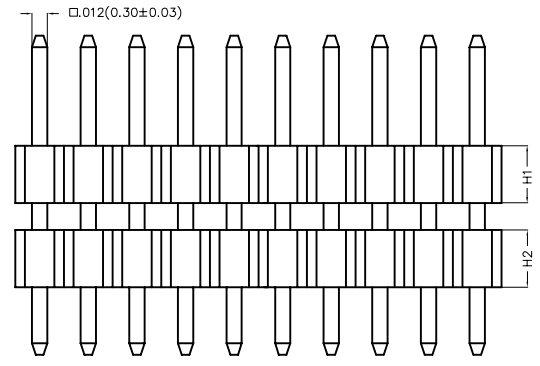
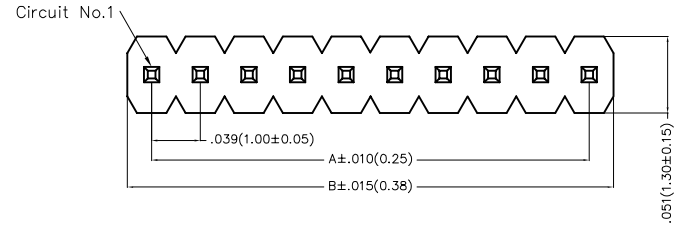
REV	LOCATIONS	DESCRIPTION	DATE	REVISER	APPD



SPECIFICATIONS

Electrical
 Current Rating:1.0A AC(rms)/DC
 Voltage Rating:250V AC(rms)/DC
 Contact Resistance:20 m Max
 Insulation Resistance:1000 M MIN
 Withstanding Voltage:300V AC r.m.s
 Temperature Range-Operating:-40°C~+105°C

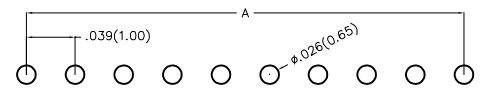
Material and Plating
 Housing: Glass Filled Polyester (UL 94V-0), Color: Black
 Pin: Brass
 Pin Plating:Gold plated/ Selective gold plated on contact area and 120μ" Min. matte tin plated on tails area



Ordering Information

FPH 100 25 - S XX S X XX X XX XX XX B
 1 2 3 4 5 6 7 8 9 10 11 12 13

1 Category FPH-Pin Header	2 Series Number 100-Pitch1.00mm	3 Distinction No. 25	4 Row Option S-Single Row	5 Circuits XX	6 Entry Angle S-180° Vertical	7 Plating 1-Gold plated 7-Selective gold plated on contact area and matte tin plated on tails area
8 Thickness of Plating 01-1μ" 15-15μ" Custom plate available	9 Material-Resin 3-LCP 4-PA6T 5-PA9T	10 E Size 01,02...-Serial number (See Table1)	11 F Size 01,02...-Serial number (See Table1)	12 H Size 01,02...-Serial number (See Table1)	13 Packaging B-PE Bag	



Recommended P.C.Board Layout



 THIRD ANGLE PROJECTION DESIGN UNITS Inch (metric) SCALE 5:1 SIZE A<	GENERAL TOLERANCES (UNLESS SPECIFIED) X.±.012(0.30) X.±5' X.X±.008(0.20) .X'±2' X.XX±.006(0.15) .XX'±1' X.XXX±.004(0.10) .XXX'±0.5'		APPROVE BY FRANK CHECKED BY CHERRY DRAWN BY ZOEY	DATE 26/DEC/19 DATE 26/DEC/19 DATE 26/DEC/19	PART NO. FPH10025-SXXSXXXXXXXXXXB TITLE Board to Board(Pin Header) Pitch 1.00mm 180° Vertical(DIP)	ITEM NO. FPH10025 REV 0 SHEET NO. 1/3	 3K-KAMING THIS DRAWING CONTAINS INFORMATION THAT IS PROPRIETARY TO DONG GUAN LANG LUN(3K-KAMING) ELECTRONIC PRODUCTS CO.,LTD. AND SHOULD NOT BE USED WITHOUT WRITTEN PERMISSION
--	--	--	--	--	--	---	---

1 2 3 4 5 6 7 8

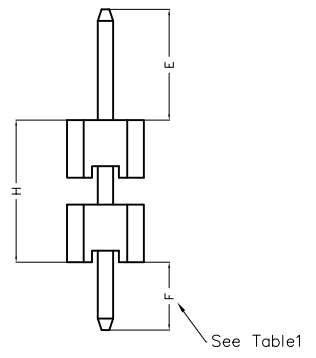
REV	LOCATIONS	DESCRIPTION	DATE	REVISER	APPD

Table1

Serial number	Dimensions (in/mm) E	Serial number	Dimensions (in/mm) E
01	.059(1.50)	19	.236(6.00)
02	.069(1.75)	20	.246(6.25)
03	.079(2.00)	21	.256(6.50)
04	.089(2.25)	22	.266(6.75)
05	.098(2.50)	23	.276(7.00)
06	.108(2.75)	24	.285(7.25)
07	.118(3.00)	25	.295(7.50)
08	.128(3.25)	26	.305(7.75)
09	.138(3.50)	27	.315(8.00)
10	.148(3.75)	28	.325(8.25)
11	.157(4.00)	29	.335(8.50)
12	.167(4.25)	30	.344(8.75)
13	.177(4.50)	31	.354(9.00)
14	.187(4.75)	32	.364(9.25)
15	.197(5.00)	33	.374(9.50)
16	.207(5.25)	34	.384(9.75)
17	.217(5.50)	35	.394(10.00)
18	.226(5.75)		

Serial number	Dimensions (in/mm) F	Serial number	Dimensions (in/mm) F
01	.059(1.50)	19	.236(6.00)
02	.069(1.75)	20	.246(6.25)
03	.079(2.00)	21	.256(6.50)
04	.089(2.25)	22	.266(6.75)
05	.098(2.50)	23	.276(7.00)
06	.108(2.75)	24	.285(7.25)
07	.118(3.00)	25	.295(7.50)
08	.128(3.25)	26	.305(7.75)
09	.138(3.50)	27	.315(8.00)
10	.148(3.75)	28	.325(8.25)
11	.157(4.00)	29	.335(8.50)
12	.167(4.25)	30	.344(8.75)
13	.177(4.50)	31	.354(9.00)
14	.187(4.75)	32	.364(9.25)
15	.197(5.00)	33	.374(9.50)
16	.207(5.25)	34	.384(9.75)
17	.217(5.50)	35	.394(10.00)
18	.226(5.75)		

Serial number	Dimensions (in/mm) H	Serial number	Dimensions (in/mm) H
01	.118(3.00)	19	.472(12.00)
02	.138(3.50)	20	.492(12.50)
03	.157(4.00)	21	.512(13.00)
04	.177(4.50)	22	.531(13.50)
05	.197(5.00)	23	.551(14.00)
06	.217(5.50)	24	.571(14.50)
07	.236(6.00)	25	.591(15.00)
08	.256(6.50)	26	.610(15.50)
09	.276(7.00)	27	.630(16.00)
10	.295(7.50)	28	.650(16.50)
11	.315(8.00)	29	.669(17.00)
12	.335(8.50)	30	.689(17.50)
13	.354(9.00)	31	.709(18.00)
14	.374(9.50)	32	.728(18.50)
15	.394(10.00)	33	.748(19.00)
16	.413(10.50)	34	.768(19.50)
17	.433(11.00)	35	.787(20.00)
18	.453(11.50)		



<p>THIRD ANGLE PROJECTION</p>	GENERAL TOLERANCES (UNLESS SPECIFIED)		APPROVE BY	DATE	PART NO.	ITEM NO.	<p>3K-KAMING</p>		
	X.±.012(0.30)	X'.±5'	FRANK	26/DEC/19	FPH10025-SXXSXXXXXXXXXB	FPH10025			
	DESIGN UNITS Inch (metric)	X.X±.008(0.20)	X'.±2'	CHECKED BY	DATE	TITLE		REV 0	SHEET NO. 2/3
	SCALE	X.XX±.006(0.15)	.XX'±1'	CHERRY	26/DEC/19	Board to Board(Pin Header) Pitch 1.00mm 180° Vertical(DIP)			
SIZE	X.XXX±.004(0.10)	.XXX'±0.5'	DRAWN BY	DATE	THIS DRAWING CONTAINS INFORMATION THAT IS PROPRIETARY TO DONG GUAN LANG LUN(3K-KAMING) ELECTRONIC PRODUCTS CO., LTD. AND SHOULD NOT BE USED WITHOUT WRITTEN PERMISSION				
5:1			ZOEY	26/DEC/19					

REV	LOCATIONS	DESCRIPTION	DATE	REVISER	APPD



Circuits (n)	Part No.	Dimensions(in/mm)		Circuits (n)	Part No.	Dimensions(in/mm)	
		A	B			A	B
1	FPH10025-S01SXXXXXXXXXB	—	.039(1.00)	21	FPH10025-S21SXXXXXXXXXB	.787(20.00)	.827(21.00)
2	FPH10025-S02SXXXXXXXXXB	.039(1.00)	.079(2.00)	22	FPH10025-S22SXXXXXXXXXB	.827(21.00)	.866(22.00)
3	FPH10025-S03SXXXXXXXXXB	.079(2.00)	.118(3.00)	23	FPH10025-S23SXXXXXXXXXB	.866(22.00)	.906(23.00)
4	FPH10025-S04SXXXXXXXXXB	.118(3.00)	.157(4.00)	24	FPH10025-S24SXXXXXXXXXB	.906(23.00)	.945(24.00)
5	FPH10025-S05SXXXXXXXXXB	.157(4.00)	.197(5.00)	25	FPH10025-S25SXXXXXXXXXB	.945(24.00)	.984(25.00)
6	FPH10025-S06SXXXXXXXXXB	.197(5.00)	.236(6.00)	26	FPH10025-S26SXXXXXXXXXB	.984(25.00)	1.024(26.00)
7	FPH10025-S07SXXXXXXXXXB	.236(6.00)	.276(7.00)	27	FPH10025-S27SXXXXXXXXXB	1.024(26.00)	1.063(27.00)
8	FPH10025-S08SXXXXXXXXXB	.276(7.00)	.315(8.00)	28	FPH10025-S28SXXXXXXXXXB	1.063(27.00)	1.102(28.00)
9	FPH10025-S09SXXXXXXXXXB	.315(8.00)	.354(9.00)	29	FPH10025-S29SXXXXXXXXXB	1.102(28.00)	1.142(29.00)
10	FPH10025-S10SXXXXXXXXXB	.354(9.00)	.394(10.00)	30	FPH10025-S30SXXXXXXXXXB	1.142(29.00)	1.181(30.00)
11	FPH10025-S11SXXXXXXXXXB	.394(10.00)	.443(11.00)	31	FPH10025-S31SXXXXXXXXXB	1.181(30.00)	1.220(31.00)
12	FPH10025-S12SXXXXXXXXXB	.443(11.00)	.472(12.00)	32	FPH10025-S32SXXXXXXXXXB	1.220(31.00)	1.260(32.00)
13	FPH10025-S13SXXXXXXXXXB	.472(12.00)	.512(13.00)	33	FPH10025-S33SXXXXXXXXXB	1.260(32.00)	1.130(33.00)
14	FPH10025-S14SXXXXXXXXXB	.512(13.00)	.551(14.00)	34	FPH10025-S34SXXXXXXXXXB	1.130(33.00)	1.339(34.00)
15	FPH10025-S15SXXXXXXXXXB	.551(14.00)	.591(15.00)	35	FPH10025-S35SXXXXXXXXXB	1.339(34.00)	1.379(35.00)
16	FPH10025-S16SXXXXXXXXXB	.591(15.00)	.630(16.00)	36	FPH10025-S36SXXXXXXXXXB	1.379(35.00)	1.417(36.00)
17	FPH10025-S17SXXXXXXXXXB	.630(16.00)	.669(17.00)	37	FPH10025-S37SXXXXXXXXXB	1.417(36.00)	1.457(37.00)
18	FPH10025-S18SXXXXXXXXXB	.669(17.00)	.709(18.00)	38	FPH10025-S38SXXXXXXXXXB	1.457(37.00)	1.497(38.00)
19	FPH10025-S19SXXXXXXXXXB	.709(18.00)	.748(19.00)	39	FPH10025-S39SXXXXXXXXXB	1.497(38.00)	1.535(39.00)
20	FPH10025-S20SXXXXXXXXXB	.748(19.00)	.787(20.00)	40	FPH10025-S40SXXXXXXXXXB	1.535(39.00)	1.575(40.00)



 THIRD ANGLE PROJECTION	GENERAL TOLERANCES (UNLESS SPECIFIED)		APPROVE BY	DATE	PART NO.	ITEM NO.	 3K-KAMING
	X.±.012(0.30)	X'.±5'	FRANK	26/JUN/13	FPH10025-SXXSXXXXXXXXXB	FPH10025	
	X.X±.008(0.20)	.X'±2'	CHECKED BY	DATE	TITLE		
	X.XX±.006(0.15)	.XX'±1'	CHERRY	26/JUN/13	Board to Board(Pin Header) Pitch 1.00mm 180° Vertical(DIP)		
SCALE	SIZE	X.XXX±.004(0.10)	.XXX'±0.5'	DRAWN BY	DATE	THIS DRAWING CONTAINS INFORMATION THAT IS PROPRIETARY TO DONG GUAN LANG LUN(3K-KAMING) ELECTRONIC PRODUCTS CO.,LTD. AND SHOULD NOT BE USED WITHOUT WRITTEN PERMISSION	
5:1	A<			ZOEY	26/JUN/13	REV 0	SHEET NO. 3/3