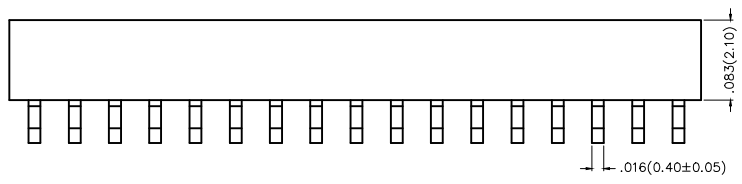
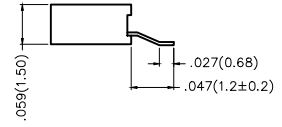
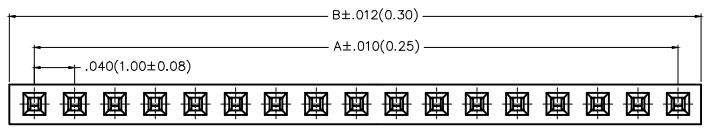


REV	LOCATIONS	DESCRIPTION	DATE	REVISER	APPD



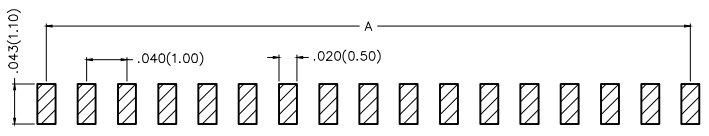
Electrical
 Current Rating: 1A AC(rms)/DC
 Voltage Rating: 300V AC(rms)/DC
 Contact Resistance: 20 mΩ Max
 Insulation Resistance: 1000 MΩ MIN
 Withstanding Voltage: 500V AC r.m.s
 Temperature Range—Operating: -40°C~+105°C
 Material and Plating
 Housing: LCP/PA6T(UL 94V-0)
 Contact Pin: Phosphor Bronze
 Plating: Gold Plated



Ordering Information

FFH 100 09 — S XX B X XX X K6 M
 1 2 3 4 5 6 7 8 9 10 11

1 Category FFH—Female Header	2 Series Number 100—Pitch1.0mm	3 Distinction No. 09	4 Row Option S—Single Row	5 Circuits XX	6 Entry Angle B—90° Angle
7 Plating 1—Gold Plated	8 Thickness of Plating 00—Gold Flash 05—5μ Custom plate available	9 Material—Resin 3—LCP 4—PA6T	10 Color—Resin K6—Black	11 Packaging M—Reel	



Recommended P.C.Board Layout
 Tolerance: ±.002(0.05)



THIRD ANGLE PROJECTION	GENERAL TOLERANCES (UNLESS SPECIFIED)		APPROVE BY FRANK	DATE 06/AUG/16	PART NO. FFH10009—SXXBXXXXK6M	ITEM NO. FFH10009	 3K-KAMING®	
	DESIGN UNITS Inch (metric)	X.±.012(0.30) X.X±.008(0.20) X.XX±.006(0.15) X.XXX±.004(0.10)	X.'±5' .X'±2' .XX'±1' .XXX'±0.5'	CHECKED BY CHERRY	DATE 06/AUG/16	TITLE Board to Board (Female Header) Pitch 1.0mm 90° Angle (SMT)		REV 0
SCALE 5:1	SIZE A4	DRAWN BY VERNON		DATE 06/AUG/16	THIS DRAWING CONTAINS INFORMATION THAT IS PROPRIETARY TO DONG GUAN LANG LUN(3K-KAMING) ELECTRONIC PRODUCTS CO.,LTD. AND SHOULD NOT BE USED WITHOUT WRITTEN PERMISSION			



REV	LOCATIONS	DESCRIPTION	DATE	REVISER	APPD

Circuits (n)	Part No.	Dimensions(in/mm)		Circuits (n)	Part No.	Dimensions(in/mm)	
		A	B			A	B
2	FFH10009-S02BXXXXK6M	.157(1.00)	.094(2.40)	19	FFH10009-S19BXXXXK6M	.709(18.00)	.764(19.40)
3	FFH10009-S03BXXXXK6M	.197(2.00)	.134(3.40)	20	FFH10009-S20BXXXXK6M	.748(19.00)	.803(20.40)
4	FFH10009-S04BXXXXK6M	.236(3.00)	.173(4.40)	21	FFH10009-S21BXXXXK6M	.787(20.00)	.843(21.40)
5	FFH10009-S05BXXXXK6M	.157(4.00)	.213(5.40)	22	FFH10009-S22BXXXXK6M	.827(21.00)	.882(22.40)
6	FFH10009-S06BXXXXK6M	.197(5.00)	.252(6.40)	23	FFH10009-S23BXXXXK6M	.866(22.00)	.921(23.40)
7	FFH10009-S07BXXXXK6M	.236(6.00)	.291(7.40)	24	FFH10009-S24BXXXXK6M	.906(23.00)	.961(24.40)
8	FFH10009-S08BXXXXK6M	.276(7.00)	.331(8.40)	25	FFH10009-S25BXXXXK6M	.945(24.00)	1.000(25.40)
9	FFH10009-S09BXXXXK6M	.315(8.00)	.370(9.40)	26	FFH10009-S26BXXXXK6M	.984(25.00)	1.039(26.40)
10	FFH10009-S10BXXXXK6M	.354(9.00)	.409(10.40)	27	FFH10009-S27BXXXXK6M	1.024(26.00)	1.079(27.40)
11	FFH10009-S11BXXXXK6M	.394(10.00)	.449(11.40)	28	FFH10009-S28BXXXXK6M	1.063(27.00)	1.118(28.40)
12	FFH10009-S12BXXXXK6M	.433(11.00)	.488(12.40)	29	FFH10009-S29BXXXXK6M	1.102(28.00)	1.157(29.40)
13	FFH10009-S13BXXXXK6M	.472(12.00)	.528(13.40)	30	FFH10009-S30BXXXXK6M	1.142(29.00)	1.197(30.40)
14	FFH10009-S14BXXXXK6M	.512(13.00)	.567(14.40)	31	FFH10009-S31BXXXXK6M	1.181(30.00)	1.236(31.40)
15	FFH10009-S15BXXXXK6M	.551(14.00)	.606(15.40)	32	FFH10009-S32BXXXXK6M	1.221(31.00)	1.276(32.40)
16	FFH10009-S16BXXXXK6M	.591(15.00)	.646(16.40)	33	FFH10009-S33BXXXXK6M	1.260(32.00)	1.315(33.40)
17	FFH10009-S17BXXXXK6M	.630(16.00)	.685(17.40)	34	FFH10009-S34BXXXXK6M	1.299(33.00)	1.354(34.40)
18	FFH10009-S18BXXXXK6M	.670(17.00)	.724(18.40)	35	FFH10009-S35BXXXXK6M	1.339(34.00)	1.394(35.40)



 THIRD ANGLE PROJECTION	GENERAL TOLERANCES (UNLESS SPECIFIED)		APPROVE BY	DATE	PART NO.	ITEM NO.	 3K-KAMING	
	X.±.012(0.30)	X.±5'	FRANK	06/AUG/16	FFH10009-SXXBXXXXK6M	FFH10009		
	X.X±.008(0.20)	.X'±2"	CHECKED BY	DATE	TITLE			
	X.XX±.006(0.15)	.XX'±1"	CHERRY	06/AUG/16	Board to Board (Female Header) Pitch 1.00mm 90° Angle (SMT)			
SCALE 5:1	SIZE A4	X.XXX±.004(0.10)	.XXX'±0.5'	DRAWN BY	DATE	THIS DRAWING CONTAINS INFORMATION THAT IS PROPRIETARY TO DONG GUAN LANG LUN(3K-KAMING) ELECTRONIC PRODUCTS CO., LTD. AND SHOULD NOT BE USED WITHOUT WRITTEN PERMISSION	REV 0	SHEET NO. 2/2
				VERNON	06/AUG/16			