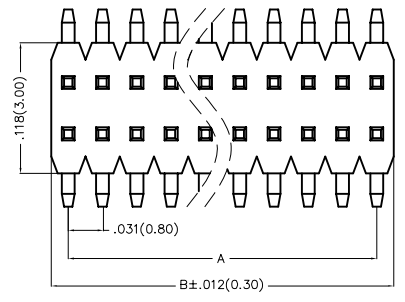


REV	LOCATIONS	DESCRIPTION	DATE	REVISER	APPD

A
B
C
D
E
F

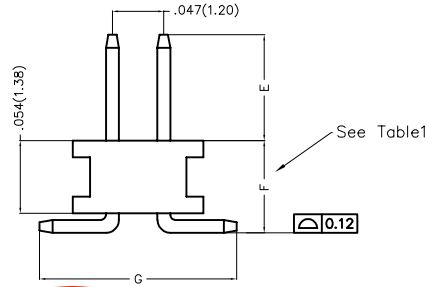
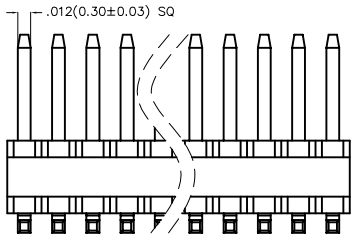
A
B
C
D
E
F



SPECIFICATIONS

Electrical
 Current Rating: 1.0A AC(rms)/DC
 Voltage Rating: 250V AC(rms)/DC
 Contact Resistance: 20 mΩ Max
 Insulation Resistance: 1000 MΩ Min
 Withstanding Voltage: 300V AC r.m.s
 Temperature Range-Operating: -40°C~+125°C

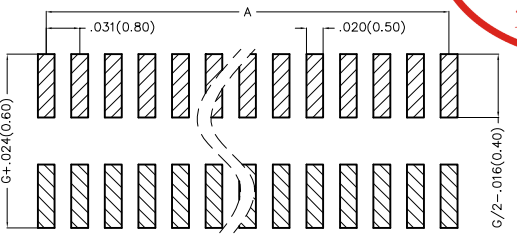
Material and Plating
 Housing: PA6T (UL 94V-0)
 Pin: Phosphor Bronze/
 Pin Plating: Gold plated/ Selective gold plated on contact area and 120μ" Min. matte tin plated on tails area



Ordering Information

FPH 080 02 - D XX S X XX 4 XX XX XX M
 1 2 3 4 5 6 7 8 9 10 11 12 13

1 Category FPH-Pin Header	2 Series Number 080-Pitch0.80mm	3 Distinction No. 02	4 Row Option D-Double Row	5 Circuits XX	6 Entry Angle S-180° Vertical	7 Plating 1-Gold plated 7-Selective gold plated on contact area and matte tin plated on tails area
8 Thickness of Plating 01-1μ" 15-15μ" Custom plate available	9 Material-Resin 4-PA6T	10 E Size 01,02...-Serial number (See Table1)	11 F Size 01,02...-Serial number (See Table1)	12 G Size 01,02...-Serial number (See Table1)	13 Packaging M-Reel	



Recommended P.C.Board Layout

 THIRD ANGLE PROJECTION DESIGN UNITS Inch (metric) SCALE 5:1 SIZE A/L	GENERAL TOLERANCES (UNLESS SPECIFIED)		APPROVE BY FRANK	DATE 26/DEC/19	PART NO. FPH08002-DXXSXXX4XXXXXXM	ITEM NO. FPH08002	 3K-KAMING REV 0 SHEET NO. 1/3
	X.±.012(0.30)	X'.±5'	CHECKED BY CHERRY	DATE 26/DEC/19	TITLE Board to Board(Pin Header) Pitch 0.8mm 180° Vertical(SMT)		
	X.XX±.008(0.20)	.X'±2'	DRAWN BY ZOEY	DATE 26/DEC/19	THIS DRAWING CONTAINS INFORMATION THAT IS PROPRIETARY TO DONG GUAN LANG LUN(3K-KAMING) ELECTRONIC PRODUCTS CO.,LTD. AND SHOULD NOT BE USED WITHOUT WRITTEN PERMISSION		
	X.XX±.006(0.15)	.XX'±1'					
	X.XXX±.004(0.10)	.XXX'±0.5'					

1 2 3 4 5 6 7 8

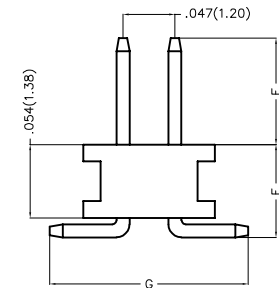
REV	LOCATIONS	DESCRIPTION	DATE	REVISER	APPD

Table1

Serial number	Dimensions (in/mm) E	Serial number	Dimensions (in/mm) E
01	.059(1.50)	19	.236(6.00)
02	.069(1.75)	20	.246(6.25)
03	.079(2.00)	21	.256(6.50)
04	.089(2.25)	22	.266(6.75)
05	.098(2.50)	23	.276(7.00)
06	.108(2.75)	24	.285(7.25)
07	.118(3.00)	25	.295(7.50)
08	.128(3.25)	26	.305(7.75)
09	.138(3.50)	27	.315(8.00)
10	.148(3.75)	28	.325(8.25)
11	.157(4.00)	29	.335(8.50)
12	.167(4.25)	30	.344(8.75)
13	.177(4.50)	31	.354(9.00)
14	.187(4.75)	32	.364(9.25)
15	.197(5.00)	33	.374(9.50)
16	.207(5.25)	34	.384(9.75)
17	.217(5.50)	35	.394(10.00)
18	.226(5.75)		

Serial number	Dimensions (in/mm) F	Serial number	Dimensions (in/mm) F
01	.079(2.00)	19	.256(6.50)
02	.089(2.25)	20	.266(6.75)
03	.098(2.50)	21	.276(7.00)
04	.108(2.75)	22	.285(7.25)
05	.118(3.00)	23	.295(7.50)
06	.128(3.25)	24	.305(7.75)
07	.138(3.50)	25	.315(8.00)
08	.148(3.75)	26	.325(8.25)
09	.157(4.00)	27	.335(8.50)
10	.167(4.25)	28	.344(8.75)
11	.177(4.50)	29	.354(9.00)
12	.187(4.75)	30	.364(9.25)
13	.197(5.00)	31	.374(9.50)
14	.207(5.25)	32	.384(9.75)
15	.217(5.50)	33	.394(10.00)
16	.226(5.75)		
17	.236(6.00)		
18	.246(6.25)		

Serial number	Dimensions (in/mm) G	Serial number	Dimensions (in/mm) G
01	.138(3.50)	19	.315(8.00)
02	.148(3.75)	20	.325(8.25)
03	.157(4.00)	21	.335(8.50)
04	.167(4.25)	22	.344(8.75)
05	.177(4.50)	23	.354(9.00)
06	.187(4.75)	24	.364(9.25)
07	.197(5.00)	25	.374(9.50)
08	.207(5.25)	26	.384(9.75)
09	.217(5.50)	27	.394(10.00)
10	.226(5.75)		
11	.236(6.00)		
12	.246(6.25)		
13	.256(6.50)		
14	.266(6.75)		
15	.276(7.00)		
16	.285(7.25)		
17	.295(7.50)		
18	.305(7.75)		



 THIRD ANGLE PROJECTION	GENERAL TOLERANCES (UNLESS SPECIFIED)		APPROVE BY	DATE	PART NO.	ITEM NO.	 3K-KAMING		
	X±.012(0.30)	X:±5'	FRANK	26/DEC/19	FPH08002-DXXSXXX4XXXXXXM	FPH08002			
	DESIGN UNITS Inch (metric)	X.X±.008(0.20)	.X'±2'	CHECKED BY	DATE	TITLE		REV 0	SHEET NO. 2/3
	SCALE	X.XX±.006(0.15)	.XX'±1'	CHERRY	26/DEC/19	Board to Board (Pin Header) Pitch 0.8mm 180° Vertical (SMT)			
SIZE A4	X.XXX±.004(0.10)	.XXX'±0.5'	DRAWN BY	DATE	THIS DRAWING CONTAINS INFORMATION THAT IS PROPRIETARY TO DONG GUAN LANG LUN (3K-KAMING) ELECTRONIC PRODUCTS CO., LTD. AND SHOULD NOT BE USED WITHOUT WRITTEN PERMISSION				
			ZOEY	26/DEC/19					



REV	LOCATIONS	DESCRIPTION	DATE	REVISER	APPD

Circuits (n)	Part No.	Dimensions(in/mm)		Circuits (n)	Part No.	Dimensions(in/mm)	
		A	B			A	B
4	FPH08002-D04SXXX4XXXXXXM	.031(0.80)	.063(1.60)	54	FPH08002-D54SXXX4XXXXXXM	.819(20.80)	.850(21.60)
6	FPH08002-D06SXXX4XXXXXXM	.063(1.60)	.094(2.40)	56	FPH08002-D56SXXX4XXXXXXM	.850(21.60)	.882(22.40)
8	FPH08002-D08SXXX4XXXXXXM	.094(2.40)	.126(3.20)	58	FPH08002-D58SXXX4XXXXXXM	.882(22.40)	.913(23.20)
10	FPH08002-D10SXXX4XXXXXXM	.126(3.20)	.157(4.00)	60	FPH08002-D60SXXX4XXXXXXM	.913(23.20)	.945(24.00)
12	FPH08002-D12SXXX4XXXXXXM	.157(4.00)	.189(4.80)	62	FPH08002-D62SXXX4XXXXXXM	.945(24.00)	.976(24.80)
14	FPH08002-D14SXXX4XXXXXXM	.189(4.80)	.220(5.60)	64	FPH08002-D64SXXX4XXXXXXM	.976(24.80)	1.008(25.60)
16	FPH08002-D16SXXX4XXXXXXM	.220(5.60)	.252(6.40)	66	FPH08002-D66SXXX4XXXXXXM	1.008(25.60)	1.039(26.40)
18	FPH08002-D18SXXX4XXXXXXM	.252(6.40)	.283(7.20)	68	FPH08002-D68SXXX4XXXXXXM	1.039(26.40)	1.071(27.20)
20	FPH08002-D20SXXX4XXXXXXM	.283(7.20)	.315(8.00)	70	FPH08002-D70SXXX4XXXXXXM	1.071(27.20)	1.102(28.00)
22	FPH08002-D22SXXX4XXXXXXM	.315(8.00)	.346(8.80)	72	FPH08002-D72SXXX4XXXXXXM	1.102(28.00)	1.134(28.80)
24	FPH08002-D24SXXX4XXXXXXM	.346(8.80)	.378(9.60)	74	FPH08002-D74SXXX4XXXXXXM	1.134(28.80)	1.165(29.60)
26	FPH08002-D26SXXX4XXXXXXM	.378(9.60)	.409(10.40)	76	FPH08002-D76SXXX4XXXXXXM	1.165(29.60)	1.197(30.40)
28	FPH08002-D28SXXX4XXXXXXM	.409(10.40)	.441(11.20)	78	FPH08002-D78SXXX4XXXXXXM	1.197(30.40)	1.228(31.20)
30	FPH08002-D30SXXX4XXXXXXM	.441(11.20)	.472(12.00)	80	FPH08002-D80SXXX4XXXXXXM	1.228(31.20)	1.260(32.00)
32	FPH08002-D32SXXX4XXXXXXM	.472(12.00)	.504(12.80)	82	FPH08002-D82SXXX4XXXXXXM	1.260(32.00)	1.291(32.80)
34	FPH08002-D34SXXX4XXXXXXM	.504(12.80)	.535(13.60)	84	FPH08002-D84SXXX4XXXXXXM	1.291(32.80)	1.323(33.60)
36	FPH08002-D36SXXX4XXXXXXM	.535(13.60)	.567(14.40)	86	FPH08002-D86SXXX4XXXXXXM	1.323(33.60)	1.354(34.40)
38	FPH08002-D38SXXX4XXXXXXM	.567(14.40)	.598(15.20)	88	FPH08002-D88SXXX4XXXXXXM	1.354(34.40)	1.386(35.20)
40	FPH08002-D40SXXX4XXXXXXM	.598(15.20)	.630(16.00)	90	FPH08002-D90SXXX4XXXXXXM	1.386(35.20)	1.417(36.00)
42	FPH08002-D42SXXX4XXXXXXM	.630(16.00)	.661(16.80)	92	FPH08002-D92SXXX4XXXXXXM	1.417(36.00)	1.449(36.80)
44	FPH08002-D44SXXX4XXXXXXM	.661(16.80)	.693(17.60)	94	FPH08002-D94SXXX4XXXXXXM	1.449(36.80)	1.480(37.60)
46	FPH08002-D46SXXX4XXXXXXM	.693(17.60)	.724(18.40)	96	FPH08002-D96SXXX4XXXXXXM	1.480(37.60)	1.512(38.40)
48	FPH08002-D48SXXX4XXXXXXM	.724(18.40)	.756(19.20)	98	FPH08002-D98SXXX4XXXXXXM	1.512(38.40)	1.543(39.20)
50	FPH08002-D50SXXX4XXXXXXM	.756(19.20)	.787(20.00)	100	FPH08002-D100SXXX4XXXXXXM	1.543(39.20)	1.575(40.00)
52	FPH08002-D52SXXX4XXXXXXM	.787(20.00)	.819(20.80)				



 THIRD ANGLE PROJECTION	GENERAL TOLERANCES (UNLESS SPECIFIED)		APPROVE BY FRANK	DATE 26/DEC/19	PART NO. FPH08002-DXXSXXX4XXXXXXM	ITEM NO. FPH08002	 3K-KAMING	
	X.±.012(0.30)	X.±5'	CHECKED BY CHERRY	DATE 26/DEC/19	TITLE Board to Board(Pin Header) Pitch 0.8mm 180° Vertical(SMT)			REV 0
	DESIGN UNITS Inch (metric)	X.X±.008(0.20)	.X'±2'	DRAWN BY ZOEY	DATE 26/DEC/19	THIS DRAWING CONTAINS INFORMATION THAT IS PROPRIETARY TO DONG GUAN LANG JUN(3K-KAMING) ELECTRONIC PRODUCTS CO.,LTD. AND SHOULD NOT BE USED WITHOUT WRITTEN PERMISSION		SHEET NO. 3/3
	SCALE 5:1	SIZE A<	X.XXX±.004(0.10)	.XXX'±0.5'				