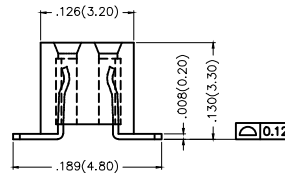
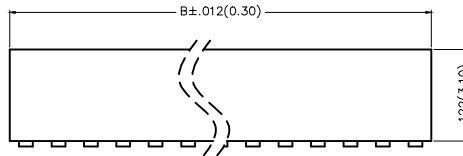
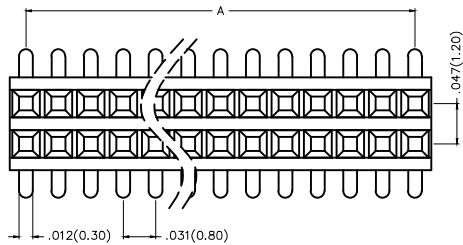


REV	LOCATIONS	DESCRIPTION	DATE	REVISER	APPD
1	△	Add the size table	26/MAY/15	KATE	FRANK



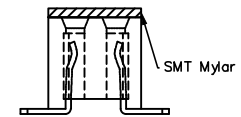
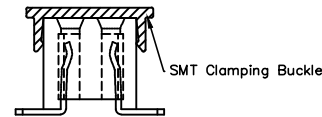
Electrical
 Current Rating: 1A AC(rms)/DC
 Voltage Rating: 250V AC(rms)/DC
 Contact Resistance: 20 mΩ Max
 Insulation Resistance: 1000 MΩ MIN
 Withstanding Voltage: 300V AC r.m.s
 Temperature Range—Operating: -40°C ~ +105°C

Material and Plating
 Housing: LCP/PA6T(UL 94V-0)
 Contact Pin: Phosphor Bronze
 Plating: Gold Plated



Packing: M—Reel(With Cap)

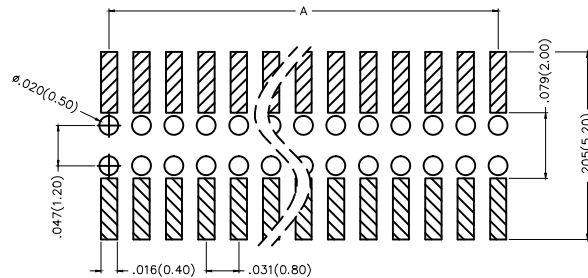
Packing: M1—Reel(With Mylar)



Ordering Information

FFH 080 01 — D XX S X XX X K6 XX
 1 2 3 4 5 6 7 8 9 10 11

1 Category FFH—Female Header	2 Series Number 080—Pitch0.8mm	3 Distinction No. 01	4 Row Option D—Double Row	5 Circuits XX	6 Entry Angle S—180° Vertical
7 Plating 1—Gold Plated	8 Thickness of Plating 00—Gold Flash 05—5μ" Custom plate available	9 Material—Resin 3—LCP 4—PA6T	10 Color—Resin K6—Black	11 Packaging M—Reel(With Cap) M1—Reel(With Mylar)	



Recommended P.C.Board Layout

THIRD ANGLE PROJECTION		GENERAL TOLERANCES (UNLESS SPECIFIED)		APPROVE BY	DATE	PART NO.	ITEM NO.	3K-KAMING®	
DESIGN UNITS Inch (metric)	X.±.012(0.30)	X.±5°	CHECKED BY	FRANK	5/AUG/13	FFH08001—DXXSXXXXK6XX	FFH08001	REV 1 SHEET NO. 1/2	
	X.XX±.008(0.20)	.X±2°	CHERRY		5/AUG/13			TITLE Board to Board (Female Header) Pitch 0.8mm 180° Vertical (SMT)	
SCALE	SIZE	X.XX±.006(0.15)	.XX±1°	DRAWN BY	DATE	THIS DRAWING CONTAINS INFORMATION THAT IS PROPRIETARY TO DONG GUAN LANG LUN(3K-KAMING) ELECTRONIC PRODUCTS CO.,LTD. AND SHOULD NOT BE USED WITHOUT WRITTEN PERMISSION			
5:1	A4	X.XXX±.004(0.10)	.XXX±0.5°	JACOB	5/AUG/13				



Circuits (n)	Part No.	Dimensions(in/mm)		Circuits (n)	Part No.	Dimensions(in/mm)	
		A	B			A	B
4	FFH08001-D04SXXXXK6M	.031(0.80)	.063(1.60)	54	FFH08001-D54SXXXXK6M	.819(20.80)	.850(21.60)
6	FFH08001-D06SXXXXK6M	.063(1.60)	.094(2.40)	56	FFH08001-D56SXXXXK6M	.850(21.60)	.882(22.40)
8	FFH08001-D08SXXXXK6M	.094(2.40)	.126(3.20)	58	FFH08001-D58SXXXXK6M	.882(22.40)	.913(23.20)
10	FFH08001-D10SXXXXK6M	.126(3.20)	.157(4.00)	60	FFH08001-D60SXXXXK6M	.913(23.20)	.945(24.00)
12	FFH08001-D12SXXXXK6M	.157(4.00)	.189(4.80)	62	FFH08001-D62SXXXXK6M	.945(24.00)	.976(24.80)
14	FFH08001-D14SXXXXK6M	.189(4.80)	.220(5.60)	64	FFH08001-D64SXXXXK6M	.976(24.80)	1.008(25.60)
16	FFH08001-D16SXXXXK6M	.220(5.60)	.252(6.40)	66	FFH08001-D66SXXXXK6M	1.008(25.60)	1.039(26.40)
18	FFH08001-D18SXXXXK6M	.252(6.40)	.283(7.20)	68	FFH08001-D68SXXXXK6M	1.039(26.40)	1.071(27.20)
20	FFH08001-D20SXXXXK6M	.283(7.20)	.315(8.00)	70	FFH08001-D70SXXXXK6M	1.071(27.20)	1.102(28.00)
22	FFH08001-D22SXXXXK6M	.315(8.00)	.346(8.80)	72	FFH08001-D72SXXXXK6M	1.102(28.00)	1.134(28.80)
24	FFH08001-D24SXXXXK6M	.346(8.80)	.378(9.60)	74	FFH08001-D74SXXXXK6M	1.134(28.80)	1.165(29.60)
26	FFH08001-D26SXXXXK6M	.378(9.60)	.409(10.40)	76	FFH08001-D76SXXXXK6M	1.165(29.60)	1.197(30.40)
28	FFH08001-D28SXXXXK6M	.409(10.40)	.441(11.20)	78	FFH08001-D78SXXXXK6M	1.197(30.40)	1.228(31.20)
30	FFH08001-D30SXXXXK6M	.441(11.20)	.472(12.00)	80	FFH08001-D80SXXXXK6M	1.228(31.20)	1.260(32.00)
32	FFH08001-D32SXXXXK6M	.472(12.00)	.504(12.80)	82	FFH08001-D82SXXXXK6M	1.260(32.00)	1.291(32.80)
34	FFH08001-D34SXXXXK6M	.504(12.80)	.535(13.60)	84	FFH08001-D84SXXXXK6M	1.291(32.80)	1.323(33.60)
36	FFH08001-D36SXXXXK6M	.535(13.60)	.567(14.40)	86	FFH08001-D86SXXXXK6M	1.323(33.60)	1.354(34.40)
38	FFH08001-D38SXXXXK6M	.567(14.40)	.598(15.20)	88	FFH08001-D88SXXXXK6M	1.354(34.40)	1.386(35.20)
40	FFH08001-D40SXXXXK6M	.598(15.20)	.630(16.00)	90	FFH08001-D90SXXXXK6M	1.386(35.20)	1.417(36.00)
42	FFH08001-D42SXXXXK6M	.630(16.00)	.661(16.80)	92	FFH08001-D92SXXXXK6M	1.417(36.00)	1.449(36.80)
44	FFH08001-D44SXXXXK6M	.661(16.80)	.693(17.60)	94	FFH08001-D94SXXXXK6M	1.449(36.80)	1.480(37.60)
46	FFH08001-D46SXXXXK6M	.693(17.60)	.724(18.40)	96	FFH08001-D96SXXXXK6M	1.480(37.60)	1.512(38.40)
48	FFH08001-D48SXXXXK6M	.724(18.40)	.756(19.20)	98	FFH08001-D98SXXXXK6M	1.512(38.40)	1.543(39.20)
50	FFH08001-D50SXXXXK6M	.756(19.20)	.787(20.00)	100	FFH08001-D100SXXXXK6M	1.543(39.20)	1.575(40.00)
52	FFH08001-D52SXXXXK6M	.787(20.00)	.819(20.80)				



 THIRD ANGLE PROJECTION	GENERAL TOLERANCES (UNLESS SPECIFIED)		APPROVE BY FRANK	DATE 5/AUG/13	PART NO. FFH08001-DXXSXXXXK6XX	ITEM NO. FFH08001	 3K-KAMING®
	X.±0.12(0.30)	X.±5'	CHECKED BY CHERRY	DATE 5/AUG/13	TITLE Board to Board (Female Header) Pitch 0.80mm 180° Vertical (SMT)		
DESIGN UNITS Inch (metric)	X.X±0.08(0.20)	.X±2'	DRAWN BY JACOB	DATE 5/AUG/13	THIS DRAWING CONTAINS INFORMATION THAT IS PROPRIETARY TO DONG GUAN LANG LUN(3K-KAMING) ELECTRONIC PRODUCTS CO., LTD. AND SHOULD NOT BE USED WITHOUT WRITTEN PERMISSION		
SCALE 5:1	X.XX±.006(0.15)	.XX±1'					
SIZE A4	X.XXX±.004(0.10)	.XXX±0.5'					