

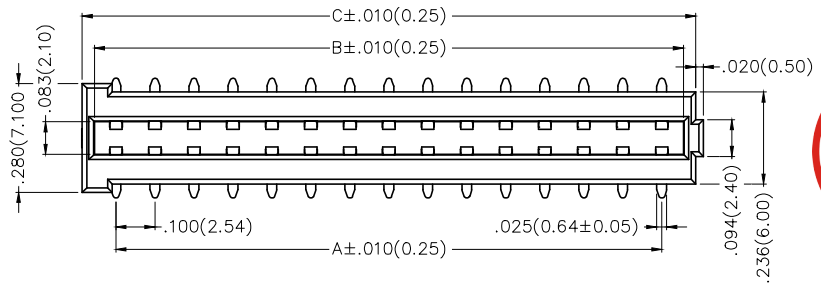
1 2 3 4 5 6 7 8

REV	LOCATIONS	DESCRIPTION	DATE	REVISER	APPD

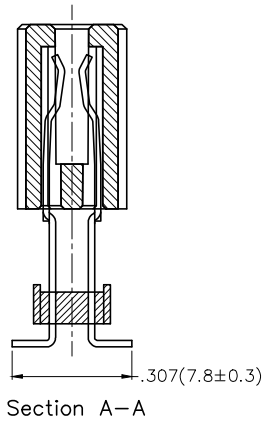
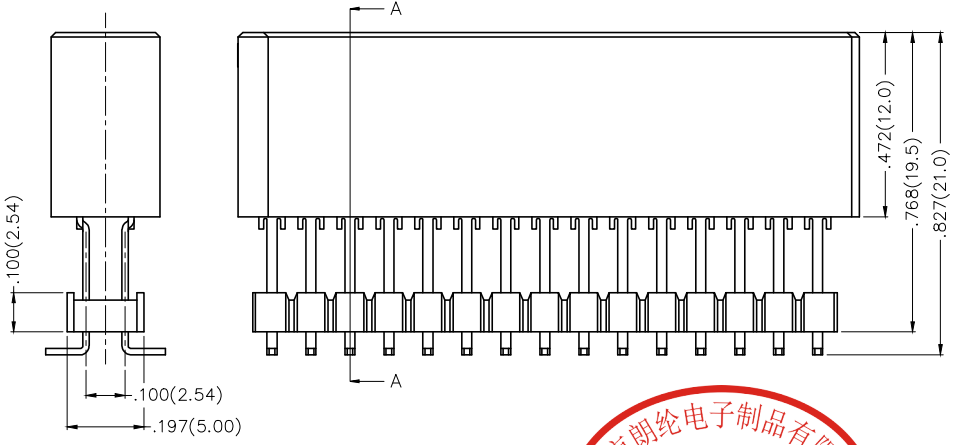
SPECIFICATIONS

Electrical
 Current Rating: 3A AC(rms)/DC
 Voltage Rating: 250V AC(rms)/DC
 Contact Resistance: 30 mΩ Max.
 Insulation Resistance: 1000 MΩ Min.
 Withstanding Voltage: 500V AC r.m.s
 Temperature Range—Operating: -25°C~+85°C

Material and Plating
 Housing: PA9T (UL 94V-0)
 Contacts: Brass/ Gold plated
 Pin header: PA6T (UL 94V-0)



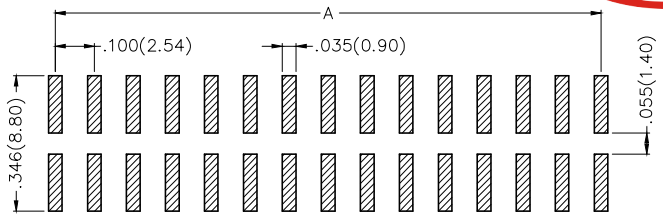
Circuits (n)	Part No.	Dimensions(in/mm)		
		A	B	C
20	FBB25401-F20S1XX5K6K	.900(22.86)	1.011(25.68)	1.074(27.28)
26	FBB25401-F26S1XX5K6K	1.200(30.48)	1.311(33.30)	1.374(34.90)
30	FBB25401-F30S1XX5K6K	1.400(35.56)	1.511(38.38)	1.574(39.98)
32	FBB25401-F32S1XX5K6K	1.500(38.10)	1.611(40.92)	1.674(42.52)
36	FBB25401-F36S1XX5K6K	1.700(43.18)	1.811(46.00)	1.874(47.60)



Ordering Information

FBB 254 01 - F XX S 1 XX 5 K6 K
 1 2 3 4 5 6 7 8 9 10 11

1 Category FBB-Board to Board	2 Series Number 254-Pitch 2.54mm	3 Distinction No. 01	4 Type F-Female	5 Circuits XX	6 Entry Angle S-180° Vertical
7 Plating 1-Gold plated	8 Thickness of Plating 00-Gold flash 01-1μ" Custom plate available	9 Material-Resin 5-PA9T	10 Color-Resin K6-Black	11 Packaging K-Tray	



Recommended P.C.Board Layout
 General Tolerances: ±0.05mm

THIRD ANGLE PROJECTION	GENERAL TOLERANCES (UNLESS SPECIFIED)		APPROVE BY FRANK	DATE 21/DEC/18	PART NO. FBB25401-FXXS1XX5K6K	ITEM NO. FBB25401	
	DESIGN UNITS Inch (metric)	X.±.012(0.30) X.X±.008(0.20) X.XX±.006(0.15) X.XXX±.004(0.10)	X.±5° .X'±2° .XX'±1° .XXX'±0.5°	CHECKED BY CHERRY	DATE 21/DEC/18	TITLE Board to Board Pitch 2mm 180° Vertical (SMT)	
SCALE 5:1	SIZE A4	DRAWN BY KATE		DATE 21/DEC/18	THIS DRAWING CONTAINS INFORMATION THAT IS PROPRIETARY TO DONG GUAN LANG LUN(3K-KAMING) ELECTRONIC PRODUCTS CO.,LTD. AND SHOULD NOT BE USED WITHOUT WRITTEN PERMISSION		

1 2 3 4 5 6 7 8