

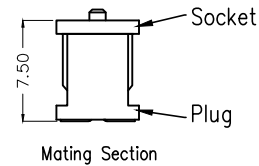
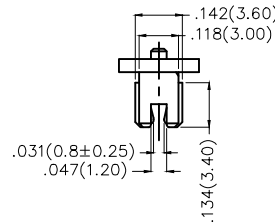
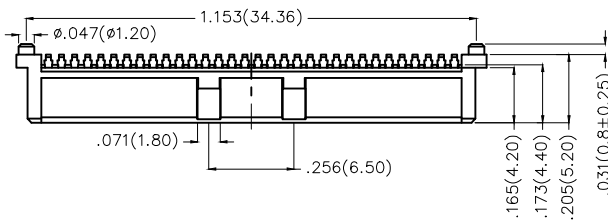
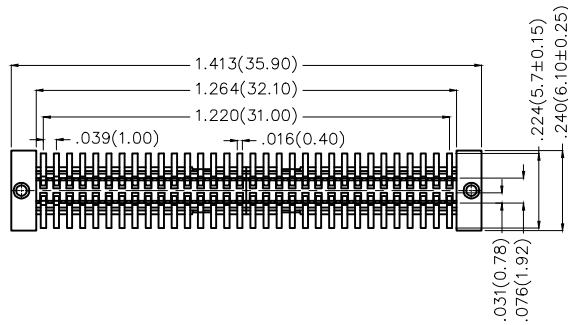
REV	LOCATIONS	DESCRIPTION	DATE	REVISER	APPD

Electrical

Current Rating: 0.5A AC(rms)/DC
Voltage Rating: 50V AC(rms)/DC
Contact Resistance: 50 m Ω Max
Insulation Resistance: 500 M Ω MIN
Withstanding Voltage: 250V AC r.m.s
Temperature Range—Operating: -40°C~+105°C

Material and Plating

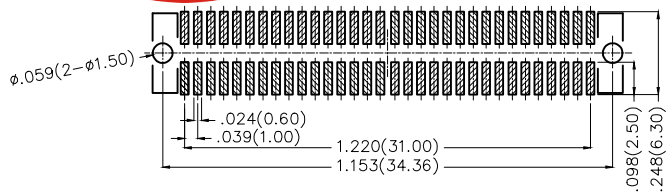
Housing: LCP(UL 94V-0)
Contact Pin: Phosphor Bronze
Plating: Gold Plated



Ordering Information

FBB 100 01 — F 64 S 1 XX 3 W5 M
1 2 3 4 5 6 7 8 9 10 11

- | | | | | | |
|---|--|------------------------------------|---------------------------------------|---------------------------------|---|
| 1 <u>Category</u>
FBB—Board To Board | 2 <u>Series Number</u>
100—Pitch1.0mm | 3 <u>Distinction No.</u>
01 | 4 <u>Type</u>
F—Female | 5 <u>Circuits</u>
64 | 6 <u>Entry Angle</u>
S—180° Vertical |
| 7 <u>Plating</u>
1—Gold Plated | 8 <u>Thickness of Plating</u>
00—Gold Flash
02—2μ"
Custom plate available | 9 <u>Material—Resin</u>
3—LCP | 10 <u>Color—Resin</u>
W5—Natural | 11 <u>Packaging</u>
M—Reel | |



Recommended P.C.Board Layout

 THIRD ANGLE PROJECTION	GENERAL TOLERANCES (UNLESS SPECIFIED)		APPROVE BY FRANK	DATE 26/SEPT/13	PART NO. FBB10001-F64S1XX3W5M	TEM NO. FBB10001-F	 3K-KAMING®	
	DESIGN UNITS Inch (metric)	X.X±.012(0.30) X.X±.008(0.20) X.XX±.006(0.15) X.XXX±.004(0.10)	X'±5" X'±2" .XX'±1" .XXX'±0.5"	CHECKED BY CHERRY	DATE 26/SEPT/13	TITLE Board to Board Pitch 1.0mm 180° Vertical (SMT)		REV 0
SCALE 5:1	SIZE A4	DRAWN BY JACOB	DATE 26/SEPT/13	THIS DRAWING CONTAINS INFORMATION THAT IS PROPRIETARY TO DONG GUAN LANG LUN(3K-KAMING) ELECTRONIC PRODUCTS CO.,LTD. AND SHOULD NOT BE USED WITHOUT WRITTEN PERMISSION				