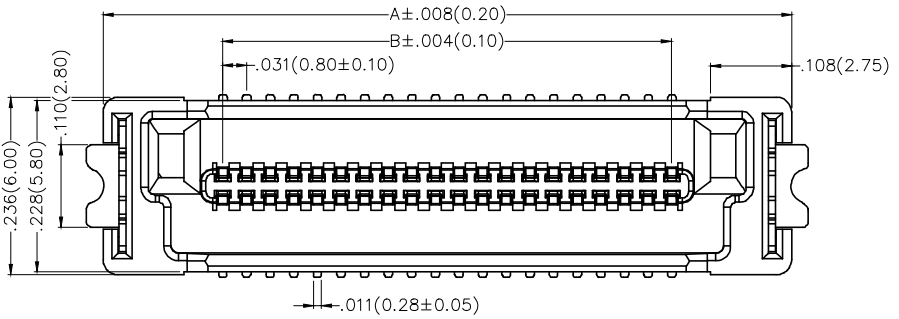


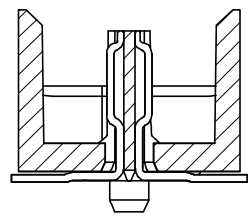
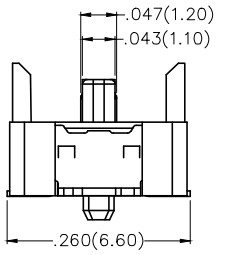
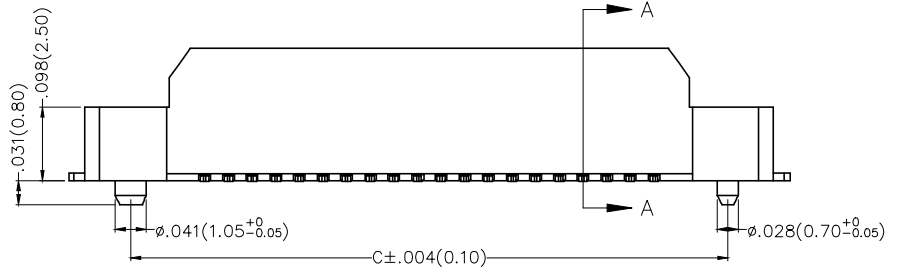
REV	LOCATIONS	DESCRIPTION	DATE	REVISER	APPD



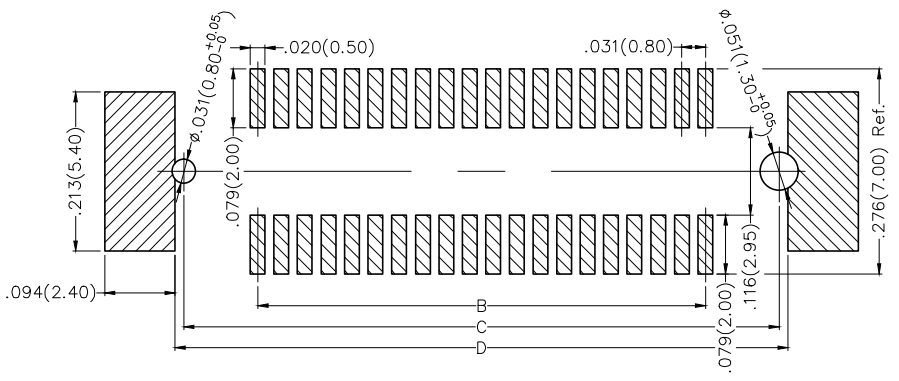
SPECIFICATIONS

Electrical
 Current Rating: 0.5A AC(rms)/DC
 Voltage Rating: 50V AC(rms)/DC
 Contact Resistance: 50 mΩ Max.
 Insulation Resistance: 100 MΩ Min.
 Withstanding Voltage: 200V AC r.m.s
 Temperature Range-Operating: -35°C~+85°C

Material and Plating
 Housing: LCP (UL 94V-0)
 Contacts: Phosphor Bronze/ Selective gold in contact area, tin on tail



Section A-A
 Scale 1.25:1



Recommended P.C.Board Layout
 General Tolerances: ±0.05mm

Ordering Information

FBB 080 08 — M XX S 3 XX 3 K6 M
 1 2 3 4 5 6 7 8 9 10 11

1 Category FBB-Board to Board	2 Series Number 080-Pitch0.80mm	3 Distinction No. 08	4 Type M-Male	5 Circuits XX	6 Entry Angle S-180° Vertical
7 Plating 3-Selective gold in contact area, tin on tail	8 Thickness of Plating 00-Gold flash 03-3μ" Custom plate available	9 Material-Resin 3-LCP	10 Color-Resin K6-Black	11 Packaging M-Reel	



THIRD ANGLE PROJECTION	GENERAL TOLERANCES (UNLESS SPECIFIED)		APPROVE BY FRANK	DATE 21/AUG/19	PART NO. FBB08008-MXXS3XX3K6M	ITEM NO. FBB08008	 3K-KAMING
	DESIGN UNITS Inch (metric)	X.±.012(0.30) X.X±.008(0.20) X.XX±.006(0.15) X.XXX±.004(0.10)	X.±5° .X'±2° .XX'±1° .XXX'±0.5°	CHECKED BY CHERRY	DATE 21/AUG/19	TITLE Board to Board Pitch 0.8mm 180° Vertical (SMT)	
SCALE 5:1	SIZE A4	DRAWN BY KATE		DATE 21/AUG/19	THIS DRAWING CONTAINS INFORMATION THAT IS PROPRIETARY TO DONG GUAN LANG LUN(3K-KAMING) ELECTRONIC PRODUCTS CO., LTD. AND SHOULD NOT BE USED WITHOUT WRITTEN PERMISSION		

1 2 3 4 5 6 7 8

REV	LOCATIONS	DESCRIPTION	DATE	REVISER	APPD

A

A

B

B

C

C

D

D

E

E

F

F



Circuits (n)	Part No.	Dimensions(in./mm)			
		A	B	C	D
40	FBB08008-M40S3XX3K6M	.917(23.30)	.598(15.20)	.795(20.20)	.819(20.80)
50	FBB08008-M50S3XX3K6M	1.075(27.30)	.756(19.20)	.953(24.20)	.976(24.80)
60	FBB08008-M60S3XX3K6M	1.232(31.30)	.913(23.20)	1.110(28.20)	1.134(28.80)
70	FBB08008-M70S3XX3K6M	1.390(35.30)	1.071(27.20)	1.268(32.20)	1.291(32.80)
80	FBB08008-M80S3XX3K6M	1.547(39.30)	1.228(31.20)	1.425(36.20)	1.449(36.80)
100	FBB08008-M100S3XX3K6M	1.862(47.30)	1.543(39.20)	1.740(44.20)	1.764(44.80)



<p>THIRD ANGLE PROJECTION</p>	<p>GENERAL TOLERANCES (UNLESS SPECIFIED)</p>		<p>APPROVE BY FRANK</p>	<p>DATE 21/AUG/19</p>	<p>PART NO. FBB08008-MXXS3XX3K6M</p>	<p>ITEM NO. FBB08008</p>	<p>3K-KAMING®</p>	
	<p>X.±.012(0.30)</p>	<p>X'±5'</p>	<p>CHECKED BY CHERRY</p>	<p>DATE 21/AUG/19</p>	<p>TITLE Board to Board Pitch 0.8mm 180° Vertical (SMT)</p>			<p>REV 0</p>
	<p>DESIGN UNITS Inch (metric)</p>	<p>X.X±.008(0.20)</p>	<p>X'±2'</p>	<p>DRAWN BY KATE</p>	<p>DATE 21/AUG/19</p>	<p>THIS DRAWING CONTAINS INFORMATION THAT IS PROPRIETARY TO DONG GUAN LANG LUN(3K-KAMING) ELECTRONIC PRODUCTS CO., LTD. AND SHOULD NOT BE USED WITHOUT WRITTEN PERMISSION</p>		

1 2 3 4 5 6 7 8