



# 东莞市朗纶电子制品有限公司 Dongguan langlun electronic products Co., Ltd

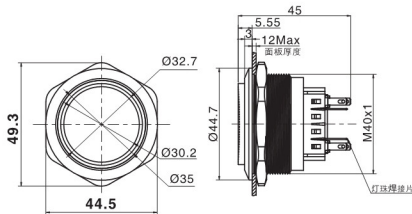
## Ø40带灯金属防水按钮开关 Metal Waterproof Push Button Switch with LED

名称/外观 Product appearance	带灯形式 Illuminated type	操作类别 Operation	触点 Contact	产品型号 Model	外壳材料 Crust Material	带灯颜色 Color	额定电压 Rated Voltage			
高面环形圆形 / High ring round 	带灯 With LED	自复 Momentary	1NO+1NC	<b>J40-261</b> □●	Ni:不锈钢 T:铜镀镍 G:铜镀铬 Ni:Stainless steel T: Copper Plated Ni G: Copper plated Cr	请用下列颜色编码 替换型号中的"□"  R 红色/Red G 绿色/Green Y 黄色/Yellow W 白色/White B 蓝色/Blue	请用下列颜色编码 替换型号中的"●"  D:24VDC E:12VDC F:6.3VDC A1:110VAC A2:220VAC			
			2NO+2NC	<b>J40-262</b> □●						
			3NO+3NC	<b>J40-263</b> □●						
			4NO+4NC	<b>J40-264</b> □●						
		自锁 Maintained	1NO+1NC	<b>J40-361</b> □●						
			2NO+2NC	<b>J40-362</b> □●						
			3NO+3NC	<b>J40-363</b> □●						
			4NO+4NC	<b>J40-364</b> □●						
			实面环形圆形 / Flat ring round 	带灯 With LED				自复 Momentary	1NO+1NC	<b>J40-271</b> □●
									2NO+2NC	<b>J40-272</b> □●
3NO+3NC	<b>J40-273</b> □●									
4NO+4NC	<b>J40-274</b> □●									
自锁 Maintained	1NO+1NC	<b>J40-371</b> □●								
	2NO+2NC	<b>J40-372</b> □●								
	3NO+3NC	<b>J40-373</b> □●								
	4NO+4NC	<b>J40-374</b> □●								
	实面点头圆形 / High point round 	带灯 With LED			自复 Momentary	1NO+1NC	<b>J40-281</b> □●			
						2NO+2NC	<b>J40-282</b> □●			
3NO+3NC			<b>J40-283</b> □●							
4NO+4NC			<b>J40-284</b> □●							
自锁 Maintained			1NO+1NC	<b>J40-381</b> □●						
			2NO+2NC	<b>J40-382</b> □●						
			3NO+3NC	<b>J40-383</b> □●						
			4NO+4NC	<b>J40-384</b> □●						
			弧面环形圆形 / Domed ring round 	带灯 With LED	自复 Momentary	1NO+1NC	<b>J40-2A1</b> □●			
						2NO+2NC	<b>J40-2A2</b> □●			
3NO+3NC	<b>J40-2A3</b> □●									
4NO+4NC	<b>J40-2A4</b> □●									
自锁 Maintained	1NO+1NC	<b>J40-3A1</b> □●								
	2NO+2NC	<b>J40-3A2</b> □●								
	3NO+3NC	<b>J40-3A3</b> □●								
	4NO+4NC	<b>J40-3A4</b> □●								

### 高位钮带灯



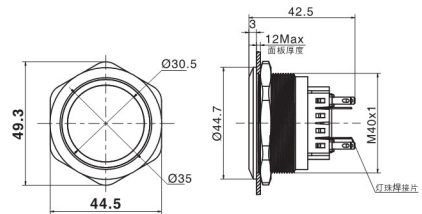
单刀/1Pole  
双刀/2Pole



### 平钮带灯



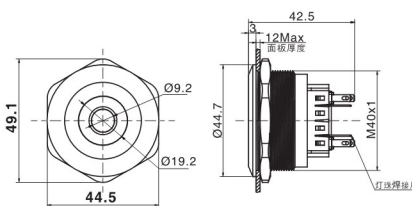
单刀/1Pole  
双刀/2Pole



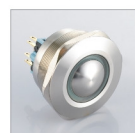
### 平钮带点头灯



单刀/1Pole  
双刀/2Pole



### 弧钮带灯



单刀/1Pole  
双刀/2Pole

