

REV	LOCATIONS	DESCRIPTION	DATE	REVISER	APPD

SPECIFICATIONS

Electrical
 Current Rating: 2.0A(Circuits), 16A(Ground)
 (One pin power per row)
 Voltage Rating: 225V AC(rms)/DC
 Contact Resistance: 15 mΩ Max.
 Insulation Resistance: 5000 MΩ Min.
 Withstanding Voltage: 675V AC r.m.s
 Temperature Range-Operating: -55°C~+85°C

Material and Plating
 Housing: LCP (UL 94V-0)
 Contacts: Phosphor Bronze/ Selective gold in contact area, matte tin on tail

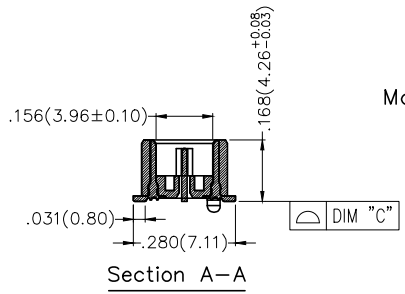
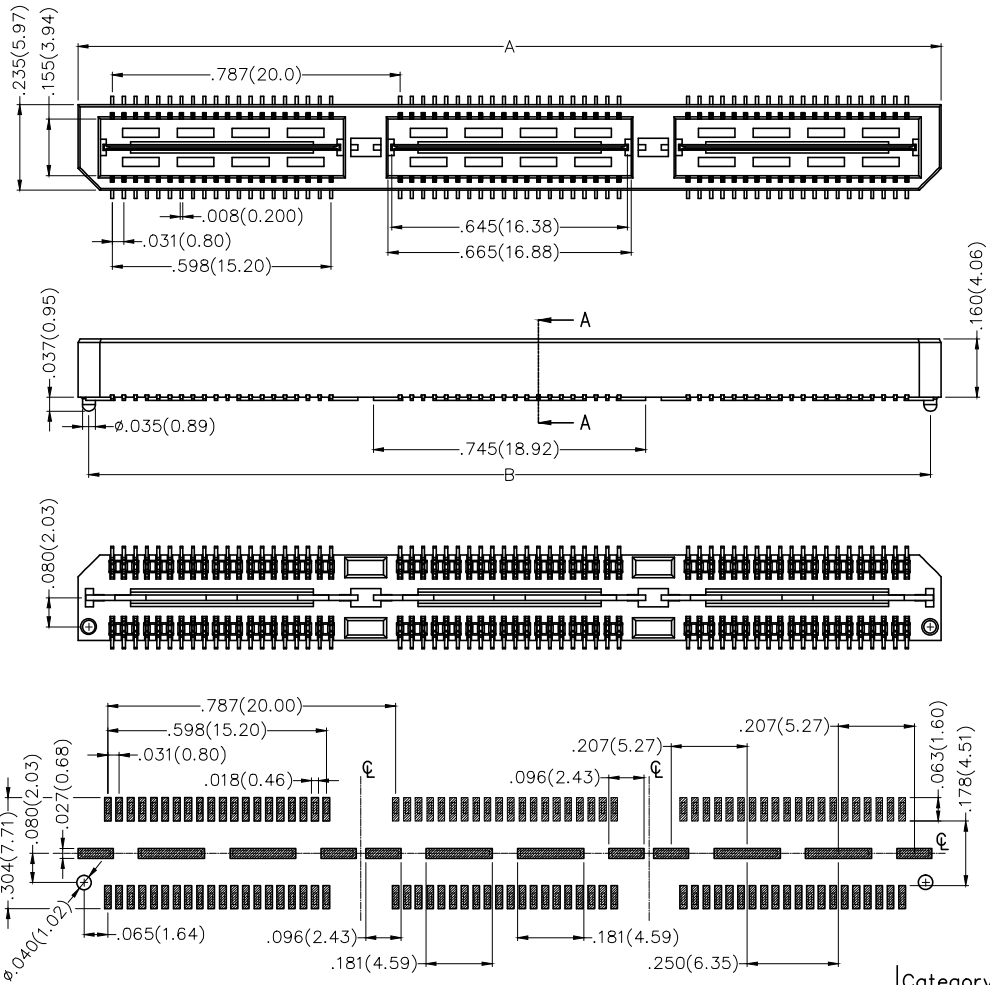


Circuits (n)	Part No.	Dimensions(in./mm)		
		A	B	C
40	FBB08004-M40S3XX3K6M	.787(20.00)	.728(18.48)	.004(0.10)
80	FBB08004-M80S3XX3K6M	1.575(40.00)	1.515(38.48)	.004(0.10)
120	FBB08004-M120S3XX3K6M	2.362(60.00)	2.302(58.48)	.006(0.15)

Ordering Information

FBB 080 04 — M XX S 3 XX 3 K6 M
 1 2 3 4 5 6 7 8 9 10 11

1	Category	2	Series Number	3	Distinction No.	4	Type	5	Circuits	6	Entry Angle
	FBB-Board to Board		080-Pitch0.80mm		04		M-Male		XX		S-180° Vertical
7	Plating	8	Thickness of Plating	9	Material-Resin	10	Color-Resin	11	Packaging		
	3-Selective gold in contact area, tin on tail		03-3μ" 05-5μ" Custom plate available		3-LCP		K6-Black		M-Reel		



Recommended P.C.Board Layout
 General Tolerances: ±0.05mm



THIRD ANGLE PROJECTION	GENERAL TOLERANCES (UNLESS SPECIFIED)		APPROVE BY	DATE	PART NO.	ITEM NO.	3K-KAMI NG
	X.±.012(0.30)	X.±5°	FRANK	21/DEC/18	FBB08004-MXXS3XX3K6M	FBB08004	
DESIGN UNITS Inch (metric)	X.X±.008(0.20)	X.±2°	CHECKED BY	DATE	TITLE		REV 0
SCALE	X.XX±.006(0.15)	.XX±1°	CHERRY	21/DEC/18	Board to Board Pitch 0.8mm 180° Vertical (SMT)		SHEET NO. 1/1
SIZE	X.XXX±.004(0.10)	.XXX±0.5°	DRAWN BY	DATE	THIS DRAWING CONTAINS INFORMATION THAT IS PROPRIETARY TO DONG GUAN LANG LUN(3K-KAMI NG) ELECTRONIC PRODUCTS CO.,LTD. AND SHOULD NOT BE USED WITHOUT WRITTEN PERMISSION		
5:1			KATE	21/DEC/18			