



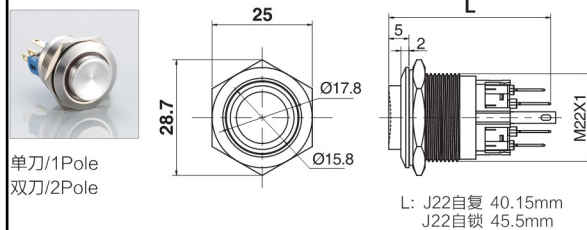
Ø22带灯金属防水按钮开关 Metal Waterproof Push Button Switch with LED

名称/外观 Product appearance	带灯形式 Illuminated type	操作类别 Operation	触点 Contact	产品型号 Model	外壳材料 Crust Material	带灯颜色 Color	额定电压 Rated Voltage
高面环形圆形 / High ring round 	带灯 With LED	自复 Momentary	1NO+1NC	<b>J22-261□●</b>	Nil:不锈钢 T:铜镀镍 G:铜镀铬 Nil:Stainless steel T: Copper Plated Ni G: Copper plated Cr	请用下列颜色编码 替换型号中的"□" R 红色/Red G 绿色/Green Y 黄色/Yellow W 白色/White B 蓝色/Blue	请用下列颜色编码 替换型号中的"●" D:24VDC E:12VDC F:6.3VDC A1:110VAC A2:220VAC
			2NO+2NC	<b>J22-262□●</b>			
		自锁 Maintained	1NO+1NC	<b>J22-361□●</b>			
			2NO+2NC	<b>J22-362□●</b>			
实面环形圆形 / Flat ring round 	带灯 With LED	自复 Momentary	1NO+1NC	<b>J22-271□●</b>			
			2NO+2NC	<b>J22-272□●</b>			
		自锁 Maintained	1NO+1NC	<b>J22-371□●</b>			
			2NO+2NC	<b>J22-372□●</b>			
实面点头圆形 / High point round 	带灯 With LED	自复 Momentary	1NO+1NC	<b>J22-281□●</b>			
			2NO+2NC	<b>J22-282□●</b>			
		自锁 Maintained	1NO+1NC	<b>J22-381□●</b>			
			2NO+2NC	<b>J22-382□●</b>			

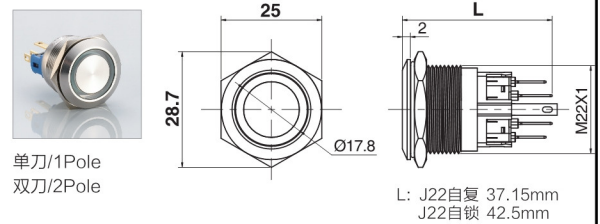
Ø22急停按钮 Emergency Stop Button

名称/外观 Product appearance	操作类型 Operation type	安装方法 Method	开关组合 Contact Configuration	触点 Contact	产品型号 Model	外壳材料 Crust Material
急停按钮 Emergency Stop Button 	推锁旋放式 Push-lock Turn-reset	拆装式 Combined Structure	1NO 1NC/2NO 2NC/3NO 3NC	单刀/1Pole	<b>J22-811</b>	不锈钢 Stainless steel
				双刀/2Pole	<b>J22-812</b>	

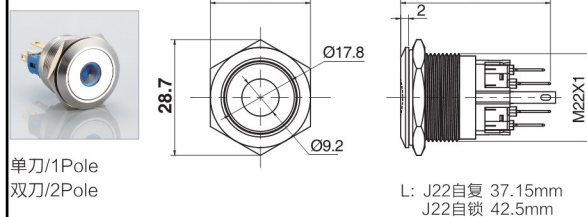
高位钮带灯



平钮带灯



平钮带点头灯



急停按钮

