

J16/19/22/25-C

大电源金属按钮

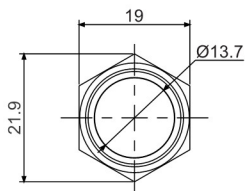
平面按钮 Flat button

外观

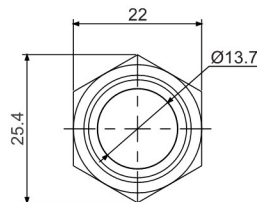
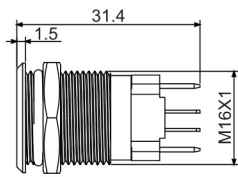


操作类别 Operation	触点 Contact	产品型号 Model	外壳材料 Crust material
自复 Monentary	1NO+1NC	J16-C-211	空: 不锈钢 T: 铜镀铬 Blank: Stainless steel T: Copper plated Cr
自锁 Maintained	1NO+1NC	J16-C-311	
自复 Monentary	1NO+1NC	J19-C-211	
自锁 Maintained	1NO+1NC	J19-C-311	
自复 Monentary	1NO+1NC	J22-C-211	
	2NO+2NC	J22-C-212	
自锁 Maintained	1NO+1NC	J22-C-311	
	2NO+2NC	J22-C-312	
自复 Monentary	1NO+1NC	J25-C-211	
	2NO+2NC	J25-C-212	
自锁 Maintained	1NO+1NC	J25-C-311	
	2NO+2NC	J25-C-312	

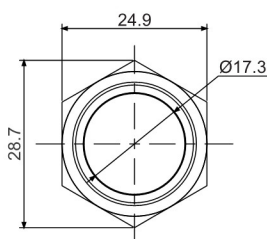
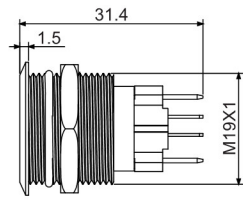
尺寸图 Dimensions



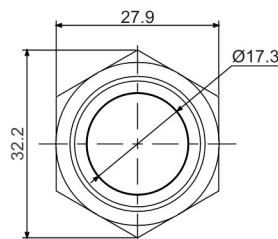
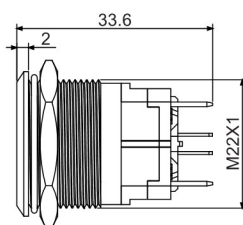
J16-C-211



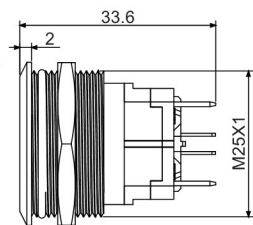
J19-C-211



J22-C-211



J25-C-211

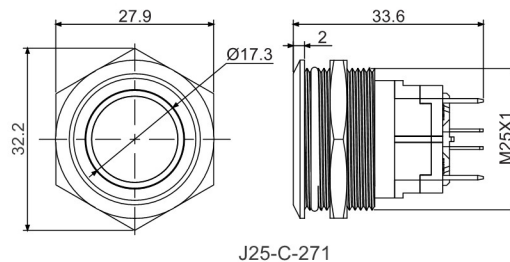
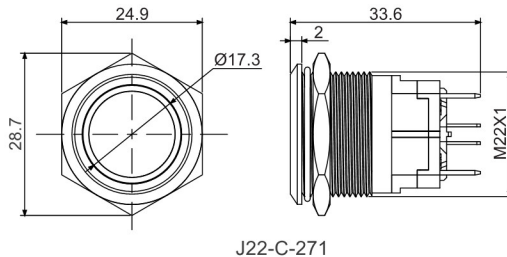
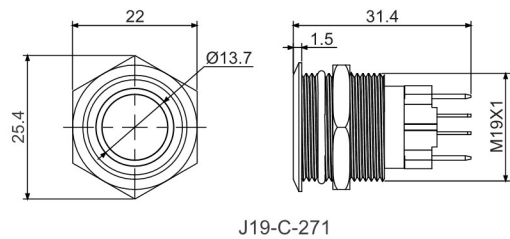
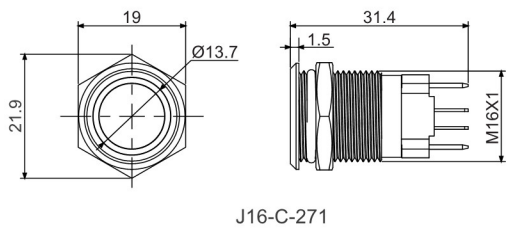


环面带灯按钮 Ring illuminated button

外观 Appearance	操作类别 Operation	触点 Contact	产品型号 Model	灯珠颜色 Color	灯珠电压 Voltage	外壳材料 Crust material
	自复 Monentary	1NO+1NC	J16-C-271 ■■■■▲	请用下列编码替换型号中的“■” ■ 红色/Red ■ 绿色/Green ■ 蓝色/Blue ■ 白色/White ■ 黄色/Yellow ■ 橘色/Orange	请用下列编码替换型号中的“▲” ▲ D: 24VDC ▲ E: 12VDC ▲ F: 6.3VDC ▲ A1: 110VAC ▲ A2: 220VAC	空: 不锈钢 T: 铜镀铬 Blank: Stainless steel T: Copper plated Cr
	自锁 Maintained	1NO+1NC	J16-C-371 ■■■■▲			
	自复 Monentary	1NO+1NC	J19-C-271 ■■■■▲			
	自锁 Maintained	1NO+1NC	J19-C-371 ■■■■▲			
	自复 Monentary	1NO+1NC	J22-C-271 ■■■■▲			
		2NO+2NC	J22-C-272 ■■■■▲			
	自锁 Maintained	1NO+1NC	J22-C-371 ■■■■▲			
		2NO+2NC	J22-C-372 ■■■■▲			
	自复 Monentary	1NO+1NC	J25-C-271 ■■■■▲			
		2NO+2NC	J25-C-272 ■■■■▲			
	自锁 Maintained	1NO+1NC	J25-C-371 ■■■■▲			
		2NO+2NC	J25-C-372 ■■■■▲			

注：默认单色，双色三色可选，颜色自由搭配。The default monochrome, two-color three-color optional, color free to match.

尺寸图 Dimensions



电源符号带灯按钮 Power symbol with light button

外观 Appearance	操作类别 Operation	触点 Contact	产品型号 Model	灯珠颜色 Color	灯珠电压 Voltage	外壳材料 Crust material
	自复 Monentary	1NO+1NC	J16-C-271-P ■■■▲	请用下列编码替换型号中的“■” R 红色/Red G 绿色/Green B 蓝色/Blue W 白色/White Y 黄色/Yellow O 橘色/Orange	请用下列编码替换型号中的“▲” D: 24VDC E: 12VDC F: 6.3VDC A1: 110VAC A2: 220VAC	空: 不锈钢 T: 铜镀铬 Blank: Stainless steel T: Copper plated Cr
	自锁 Maintained	1NO+1NC	J16-C-371-P ■■■▲			
	自复 Monentary	1NO+1NC	J19-C-271-P ■■■▲			
	自锁 Maintained	1NO+1NC	J19-C-371-P ■■■▲			
	自复 Monentary	1NO+1NC	J22-C-271-P ■■■▲			
		2NO+2NC	J22-C-272-P ■■■▲			
	自锁 Maintained	1NO+1NC	J22-C-371-P ■■■▲			
		2NO+2NC	J22-C-372-P ■■■▲			
	自复 Monentary	1NO+1NC	J25-C-271-P ■■■▲			
		2NO+2NC	J25-C-272-P ■■■▲			
	自锁 Maintained	1NO+1NC	J25-C-371-P ■■■▲			
		2NO+2NC	J25-C-372-P ■■■▲			

注：默认单色，双色三色可选，颜色自由搭配。The default monochrome, two-color three-color optional, color free to match.

尺寸图 Dimensions

