

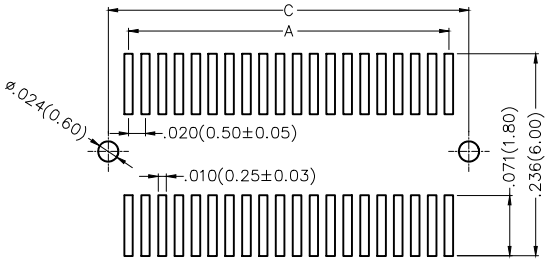
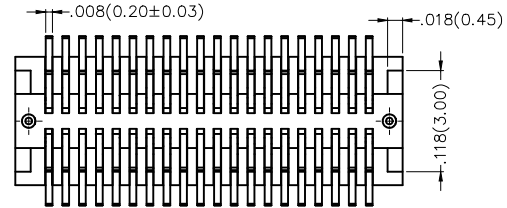
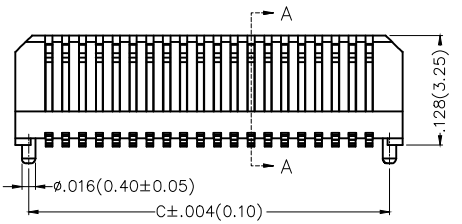
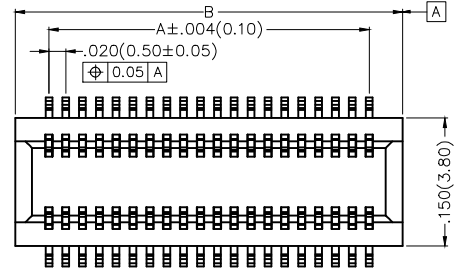
REV	LOCATIONS	DESCRIPTION	DATE	REVISER	APPD



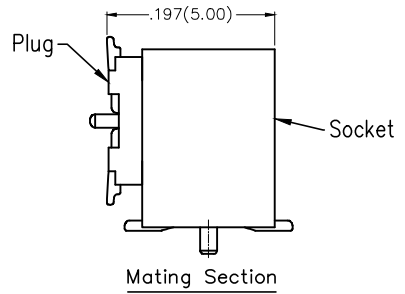
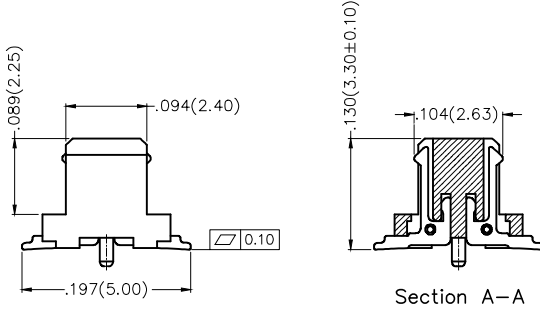
SPECIFICATIONS

Electrical
 Current Rating: 0.5A AC(rms)/DC
 Voltage Rating: 60V AC(rms)/DC
 Contact Resistance: 60 mΩ Max.
 Insulation Resistance: 800 MΩ Min.
 Withstanding Voltage: 500V AC r.m.s
 Temperature Range—Operating: -25°C~+85°C

Material and Plating
 Housing: PA9T (UL 94V-0)
 Contacts: Phosphor Bronze/ Gold Plated



Recommended P.C.Board Layout
 General Tolerances: ±0.05mm



Ordering Information

FBB 050 06 — M XX S 1 XX 5 XX M
 1 2 3 4 5 6 7 8 9 10 11

1 Category FBB—Board to Board	2 Series Number 050—Pitch0.50mm	3 Distinction No. 06	4 Type M—Male	5 Circuits XX	6 Entry Angle S—180° Vertical
7 Plating 1—Gold Plated	8 Thickness of Plating 00—Gold Flash	9 Material—Resin 5—PA9T	10 Color—Resin W5—Natural	11 Packaging M—Reel	

THIRD ANGLE PROJECTION	GENERAL TOLERANCES (UNLESS SPECIFIED)		APPROVE BY FRANK	DATE 22/FEB/17	PART NO. FBB05006—MXXS1005W5M	ITEM NO. FBB05006	 3K-KAMING REV 0 SHEET NO. 1/2
	DESIGN UNITS Inch (metric)	X.±.012(0.30) .X'±5'	CHECKED BY CHERRY	DATE 22/FEB/17	TITLE Board to Board Pitch 0.5mm 180° Vertical (SMT)		
SCALE 5:1	SIZE A4	X.XX±.006(0.15) .XX'±1"	DRAWN BY KATE	DATE 22/FEB/17	THIS DRAWING CONTAINS INFORMATION THAT IS PROPRIETARY TO DONG GUAN LANG LUN(3K-KAMING) ELECTRONIC PRODUCTS CO.,LTD. AND SHOULD NOT BE USED WITHOUT WRITTEN PERMISSION		

REV	LOCATIONS	DESCRIPTION	DATE	REVISER	APPD



Circuits (n)	Part No.	Dimensions(in/mm)		
		A	B	C
10	FBB05006-M10S1005W5M	.079(2.00)	.157(3.98)	.126(3.20)
12	FBB05006-M12S1005W5M	.098(2.50)	.176(4.48)	.146(3.70)
14	FBB05006-M14S1005W5M	.118(3.00)	.196(4.98)	.165(4.20)
16	FBB05006-M16S1005W5M	.138(3.50)	.216(5.48)	.185(4.70)
18	FBB05006-M18S1005W5M	.157(4.00)	.235(5.98)	.205(5.20)
20	FBB05006-M20S1005W5M	.177(4.50)	.255(6.48)	.224(5.70)
22	FBB05006-M22S1005W5M	.197(5.00)	.275(6.98)	.244(6.20)
24	FBB05006-M24S1005W5M	.217(5.50)	.294(7.48)	.264(6.70)
26	FBB05006-M26S1005W5M	.236(6.00)	.314(7.98)	.283(7.20)
28	FBB05006-M28S1005W5M	.256(6.50)	.334(8.48)	.303(7.70)
30	FBB05006-M30S1005W5M	.276(7.00)	.354(8.98)	.323(8.20)
32	FBB05006-M32S1005W5M	.295(7.50)	.373(9.48)	.343(8.70)
34	FBB05006-M34S1005W5M	.315(8.00)	.393(9.98)	.362(9.20)
36	FBB05006-M36S1005W5M	.335(8.50)	.413(10.48)	.382(9.70)
38	FBB05006-M38S1005W5M	.354(9.00)	.432(10.98)	.402(10.20)
40	FBB05006-M40S1005W5M	.374(9.50)	.452(11.48)	.421(10.70)



 THIRD ANGLE PROJECTION	GENERAL TOLERANCES (UNLESS SPECIFIED)		APPROVE BY	DATE	PART NO.	ITEM NO.	 3K-KAMING®
	X.±.012(0.30)	X'.±5'	FRANK	22/FEB/17	FBB05006-MXXS1005W5M	FBB05006	
DESIGN UNITS Inch (metric)	X.X±.008(0.20)	X'±2'	CHECKED BY	DATE	TITLE		REV 0
SCALE	X.XX±.006(0.15)	.XX±1"	CHERRY	22/FEB/17	Board to Board Pitch 0.5mm 180° Vertical (SMT)		
5:1	X.XXX±.004(0.10)	.XXX±0.5'	DRAWN BY	DATE	THIS DRAWING CONTAINS INFORMATION THAT IS PROPRIETARY TO DONG GUAN LANG LUN(3K-KAMING) ELECTRONIC PRODUCTS CO.,LTD. AND SHOULD NOT BE USED WITHOUT WRITTEN PERMISSION		
A4			KATE	22/FEB/17			