

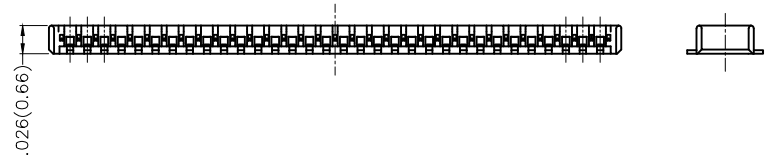
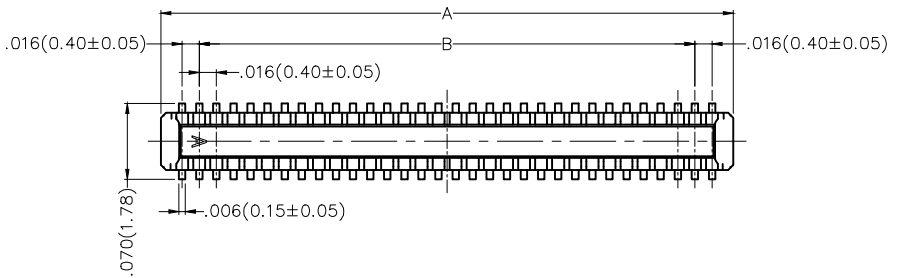
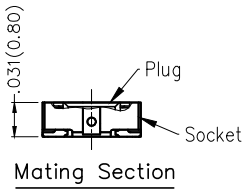
REV	LOCATIONS	DESCRIPTION	DATE	REVISER	APPD

Electrical

Current Rating: 0.3A AC(rms)/DC
Voltage Rating: 60V AC(rms)/DC
Contact Resistance: 100 mΩ Max
Insulation Resistance: 50 MΩ MIN
Withstanding Voltage: 150V AC r.m.s
Temperature Range—Operating: -35°C~+85°C

Material and Plating

Housing: LCP(UL 94V-0)
Contact Pin: Phosphor Bronze
Plating: Tin Plated/Gold Plated Over Nickel

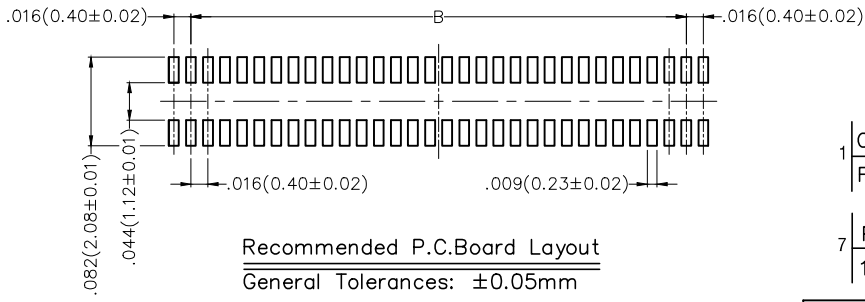


Circuits (n)	Part No.	Dimensions(in/mm)	
		A	B
16	FBB04005-M16S1033K6M	.181(4.60)	.110(2.80)
20	FBB04005-M20S1033K6M	.213(5.40)	.142(3.60)
24	FBB04005-M24S1033K6M	.244(6.20)	.173(4.40)
30	FBB04005-M30S1033K6M	.291(7.40)	.220(5.60)
40	FBB04005-M40S1033K6M	.370(9.40)	.299(7.60)
50	FBB04005-M50S1033K6M	.449(11.40)	.378(9.60)

Ordering Information

FBB 040 05 — M XX S 1 03 3 K6 M
1 2 3 4 5 6 7 8 9 10 11

1 Category FBB—Board to Board	2 Series Number 040—Pitch 0.40mm	3 Distinction No. 05	4 Type M—Male	5 Circuits XX	6 Entry Angle S—Vertical
7 Plating 1—Gold Plated	8 Thickness of Plating 00—Gold Flash 03—3μ"	9 Material—Resin 3—LCP	10 Color—Resin K6—Black	11 Packaging M—Reel	



 THIRD ANGLE PROJECTION	GENERAL TOLERANCES (UNLESS SPECIFIED)		APPROVE BY FRANK	DATE 04/JUL/16	PART NO. FBB04005-MXXS1033K6M	ITEM NO. FBB04005	 3K-KAMING®
	X.±.012(0.30)	X.±5'	CHECKED BY CHERRY	DATE 04/JUL/16	TITLE Board to Board Pitch 0.4mm 180° Vertical (SMT)		
DESIGN UNITS Inch (metric)	X.X±.008(0.20)	.X'±2'	DRAWN BY KATE	DATE 04/JUL/16	THIS DRAWING CONTAINS INFORMATION THAT IS PROPRIETARY TO DONG GUAN LANG LUN(3K-KAMING) ELECTRONIC PRODUCTS CO., LTD. AND SHOULD NOT BE USED WITHOUT WRITTEN PERMISSION		
SCALE 5:1	SIZE A4	X.XX±.006(0.15)					
		X.XXX±.004(0.10)					