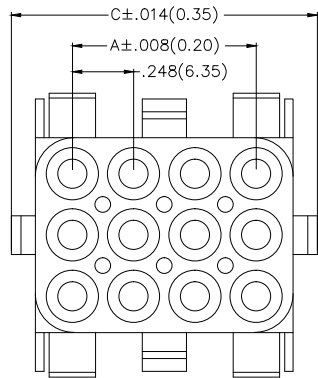
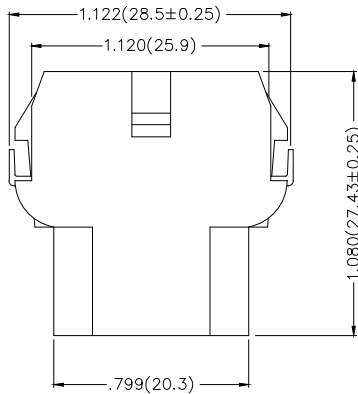
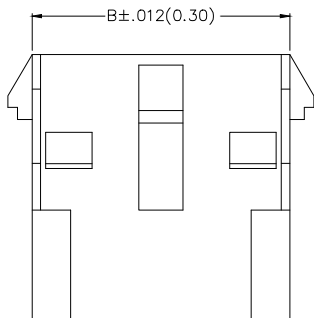


REV	LOCATIONS	DESCRIPTION	DATE	REVISER	APPD



Electrical
 Temperature Range—Operating: -25°C~+85°C
 Material
 Housing: PA66 (UL 94V-2)
 Applicable Terminal: FT63501
 Mates With: FHG63503Series.



Circuits (n)	Part No.	Dimensions(in/mm)		
		A	B	C
9	FHG63506-T09F2TB	.500(12.70)	.799(20.30)	.996(25.30)
12	FHG63506-T12F2TB	.744(19.05)	1.051(26.70)	1.248(31.70)
15	FHG63506-T15F2TB	1.000(25.40)	1.301(33.05)	1.498(38.05)

Ordering Information

FHG 635 06 — T XX F 2 T B
 1 2 3 4 5 6 7 8 9

1	Category FHG-Housing	2	Series Number 635-Pitch6.35mm	3	Distinction No. 06	4	Row Option T-Three row	5	Circuits XX
6	Entry Type F-Female	7	Material-Resin 2-PA66	8	Color-Resin T-Transparent	9	Packaging B-PE Bag		



THIRD ANGLE PROJECTION	GENERAL TOLERANCES (UNLESS SPECIFIED)		APPROVE BY FRANK	DATE 18/JUN/13	PART NO. FHG63506-TXXF2TB	ITEM NO. FHG63506		
	DESIGN UNITS Inch (metric)	X.±.012(0.30) X.X±.008(0.20)	X.±5' .X'±2'	CHECKED BY JACOB	DATE 18/JUN/13	TITLE Wire to Board Pitch 6.35mm(Housing)		REV 0
SCALE 5:1	SIZE A4	X.XX±.006(0.15) X.XXX±.004(0.10)	.XX'±1' .XXX'±0.5'	DRAWN BY CHERRY	DATE 18/JUN/13	THIS DRAWING CONTAINS INFORMATION THAT IS PROPRIETARY TO DONG GUAN LANG LUN(3K-KAMING) ELECTRONIC PRODUCTS CO.,LTD. AND SHOULD NOT BE USED WITHOUT WRITTEN PERMISSION		