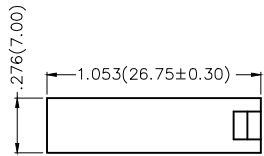


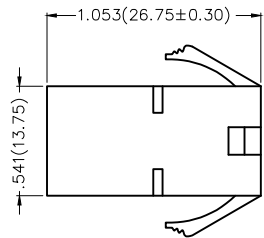
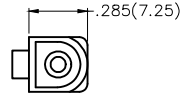
REV	LOCATIONS	DESCRIPTION	DATE	REVISER	APPD



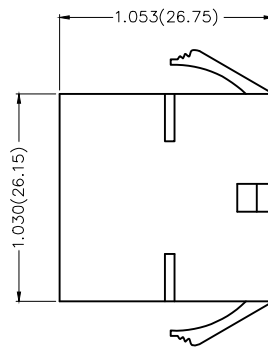
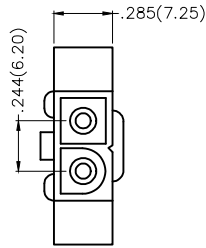
Electrical  
 Temperature Range—Operating: -25°C~+85°C  
 Material  
 Housing: PA66 (UL 94V-0)  
 Applicable Terminal: FT62001-F2H, FT62005-M2H  
 Mates With: FHG62001 Series



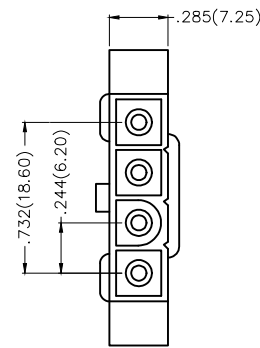
1 Pin



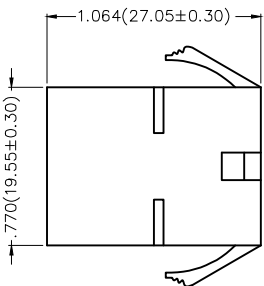
2 Pin



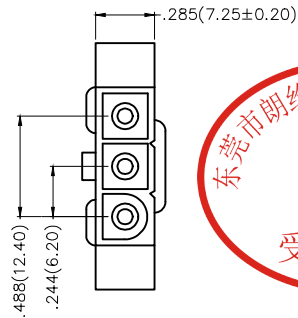
4 Pin



Circuits (n)	Part No.
1	FHG62005-S01F2TB
2	FHG62005-S02F2TB
3	FHG62005-S03F2TB
4	FHG62005-S04F2TB



3 Pin



Ordering Information

FHG 620 05 — S XX F 2 T B  
 1 2 3 4 5 6 7 8 9

1	Category FHG-Housing	2	Series Number 620-Pitch6.20mm	3	Distinction No. 05	4	Row Option S-Single Row		
5	Circuits XX	6	Type F-Female	7	Material-Resin 2-PA66	8	Color-Resin T-Transparent	9	Packaging B-PE Bag

THIRD ANGLE PROJECTION		GENERAL TOLERANCES (UNLESS SPECIFIED)		APPROVE BY	DATE	PART NO.	ITEM NO.		
DESIGN UNITS Inch (metric)	SCALE 5:1	SIZE A4	X.±0.12(0.30)	X.±5'	FRANK	18/JUN/13	FHG62005-SXXF2TB		REV 0
			X.X±.008(0.20)	.X'±2'	CHECKED BY	DATE	TITLE		
			X.XX±.006(0.15)	.XX±1'	CHEERY	18/JUN/13	Wire to Wire Pitch 6.2mm(Housing)		
			X.XXX±.004(0.10)	.XXX'±0.5'	DRAWN BY	DATE	THIS DRAWING CONTAINS INFORMATION THAT IS PROPRIETARY TO DONG GUAN LANG LUN(3K-KAMING) ELECTRONIC PRODUCTS CO.,LTD. AND SHOULD NOT BE USED WITHOUT WRITTEN PERMISSION		
					KATE	18/JUN/13			