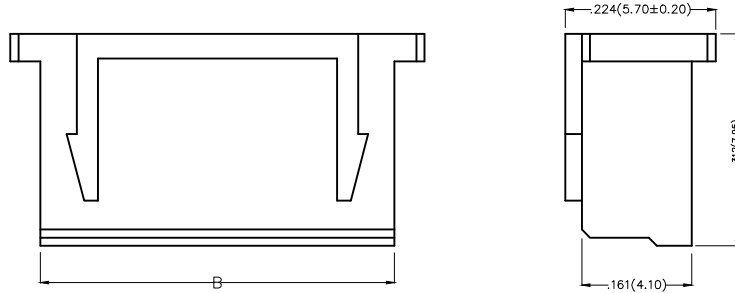
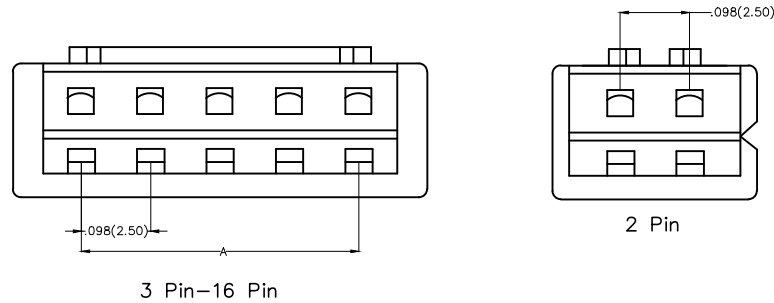


REV	LOCATIONS	DESCRIPTION	DATE	REVISER	APPD

Electrical
 Temperature Range—Operating: -25°C ~ +85°C
 Material
 Housing: PA66(UL 94V-0)
 Applicable Terminal: FT25001
 Mates With(Wafer): FWF25001,FWF25002, FWF25016, FWF25018,
 FWF25019,FWF25020,FWF25021Series.



Circuits (n)	Part No.	Dimensions(In/mm)	
		A	B
2	FHG25001-S02M2W1B	.098(2.50)	.224(5.70)
3	FHG25001-S03M2W1B	.197(5.00)	.332(8.20)
4	FHG25001-S04M2W1B	.295(7.50)	.421(10.70)
5	FHG25001-S05M2W1B	.394(10.00)	.520(13.20)
6	FHG25001-S06M2W1B	.492(12.50)	.618(15.70)
7	FHG25001-S07M2W1B	.591(15.00)	.717(18.20)
8	FHG25001-S08M2W1B	.689(17.50)	.815(20.70)
9	FHG25001-S09M2W1B	.787(20.00)	.913(23.20)
10	FHG25001-S10M2W1B	.886(22.50)	1.012(25.70)
11	FHG25001-S11M2W1B	.984(25.00)	1.110(28.20)
12	FHG25001-S12M2W1B	1.083(27.50)	1.209(30.70)
13	FHG25001-S13M2W1B	1.181(30.00)	1.307(33.20)
14	FHG25001-S14M2W1B	1.024(32.50)	1.406(35.70)
15	FHG25001-S15M2W1B	1.378(35.00)	1.504(38.20)
16	FHG25001-S16M2W1B	1.476(37.50)	1.504(40.70)



Ordering Information

FHG 250 01 - S XX M 2 W1 B
 1 2 3 4 5 6 7 8 9

1 Category FHG-Housing	2 Series Number 250-Pitch2.50mm	3 Distinction No. 01	4 Row Option Single Row	5 Circuits XX
6 Entry Type M-Male	7 Material-Resin 2-PA66	8 Color-Resin W1-White	9 Packaging B-PE Bag	



 THIRD ANGLE PROJECTION	GENERAL TOLERANCES (UNLESS SPECIFIED)		APPROVE BY FRANK	DATE 25/JUN/13	PART NO. FHG25001-SXXM2W1B	ITEM NO. FHG25001	 3K-KAMING	
	DESIGN UNITS Inch (metric)	X.X±.012(0.30)	.X'±5'	CHECKED BY JACOB	DATE 25/JUN/13	TITLE Wire to Board Pitch 2.50mm(Housing)		REV 0
SCALE 5:1	SIZE A4	X.XX±.006(0.15)	.XX'±1'	DRAWN BY CHERRY	DATE 25/JUN/13	THIS DRAWING CONTAINS INFORMATION THAT IS PROPRIETARY TO DONG GUAN LANG LUN(3K-KAMING) ELECTRONIC PRODUCTS CO.,LTD. AND SHOULD NOT BE USED WITHOUT WRITTEN PERMISSION		
		X.XXX±.004(0.10)	.XXX'±0.5'					