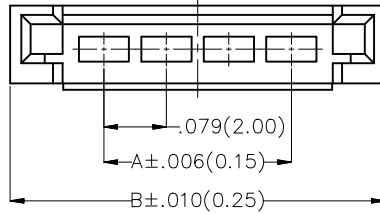
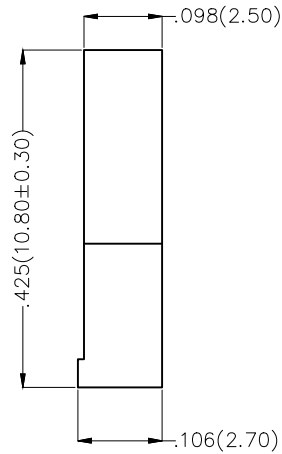
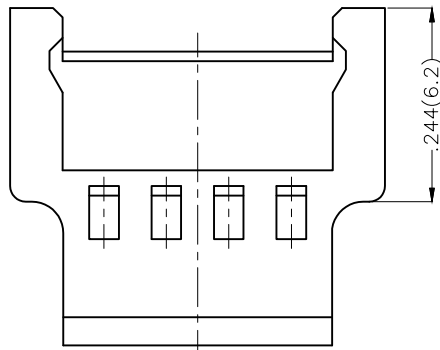


| REV | LOCATIONS | DESCRIPTION | DATE | REVISER | APPD |
|-----|-----------|-------------|------|---------|------|
|     |           |             |      |         |      |

Electrical  
 Temperature Range—Operating: -25°C~+85°C  
 Material  
 Housing: PA66( UL 94V-0)  
 Applicable Terminal: FT20010  
 Mates With(Housing): FHG20011 Series



| Circuits (n) | Part No.          | Dimensions(in/mm) |             |
|--------------|-------------------|-------------------|-------------|
|              |                   | A                 | B           |
| 2            | FHG20012-S02F2W1B | .079(2.00)        | .315(8.00)  |
| 3            | FHG20012-S03F2W1B | .157(4.00)        | .394(10.00) |
| 4            | FHG20012-S04F2W1B | .236(6.00)        | .472(12.00) |
| 5            | FHG20012-S05F2W1B | .315(8.00)        | .551(14.00) |
| 6            | FHG20012-S06F2W1B | .394(10.00)       | .630(16.00) |
| 7            | FHG20012-S07F2W1B | .472(12.00)       | .709(18.00) |
| 8            | FHG20012-S08F2W1B | .551(14.00)       | .787(20.00) |



### Ordering Information

FHG 200 12 — S XX F 2 W1 B  
 1 2 3 4 5 6 7 8 9

|             |                 |                   |               |
|-------------|-----------------|-------------------|---------------|
| 1 Category  | 2 Series Number | 3 Distinction No. | 4 Row Option  |
| FHG—Housing | 200—Pitch2.00mm | 12                | S—Single Row  |
| 5 Circuits  | 6 Type          | 7 Material—Resin  | 8 Color—Resin |
| XX          | F—Female        | 2—PA66            | K6—Black      |
|             |                 | 9 Packaging       |               |
|             |                 | B—PE Bag          |               |



|                        |                                       |           |            |           |  |          |                                       |
|------------------------|---------------------------------------|-----------|------------|-----------|--|----------|---------------------------------------|
| THIRD ANGLE PROJECTION | GENERAL TOLERANCES (UNLESS SPECIFIED) |           | APPROVE BY | DATE      | PART NO.   | ITEM NO. | <br>3K-KAMING®<br>REV 0 SHEET NO. 1/1 |
|                        | X.±.012(0.30)                         | X.±5'     | FRANK      | 25/JUN/13 | FHG20012-SXXF2W1B  | FHG20012 |                                       |
| DESIGN UNITS           | X.X±.008(0.20)                        | .X±2'     | CHECKED BY | DATE      | TITLE  |          |                                       |
| Inch (metric)          | X.XX±.006(0.15)                       | .XX±1'    | JACOB      | 25/JUN/13 | Wire to Board  |          |                                       |
| SCALE                  | X.XXX±.004(0.10)                      | .XXX±0.5' | DRAWN BY   | DATE      | Pitch 2.0mm(Housing)   |          |                                       |
| 5:1                    |                                       |           | CHERRY     | 25/JUN/13 | THIS DRAWING CONTAINS INFORMATION THAT IS PROPRIETARY TO DONG GUAN LANG LUN(3K-KAMING) ELECTRONIC PRODUCTS CO., LTD. AND SHOULD NOT BE USED WITHOUT WRITTEN PERMISSION |          |                                       |