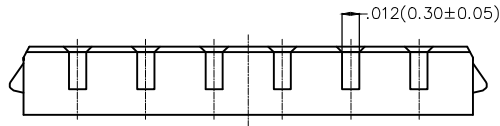
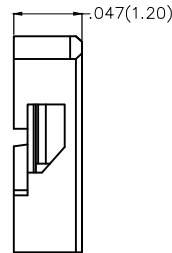
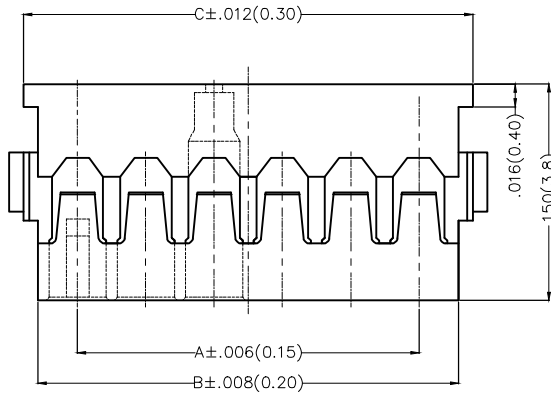


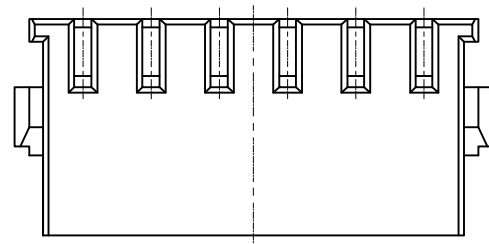
REV	LOCATIONS	DESCRIPTION	DATE	REVISER	APPD
1	△	Material-Resin changes	21/JUN/19	KATE	CHERRY



Electrical
 Temperature Range-Operating: -25°C~+85°C
 Material
 △ Housing: PA46 (UL 94V-0) Black
 Applicable Terminal: FT12002
 Mates With (Wafer): FWF12002 Series.



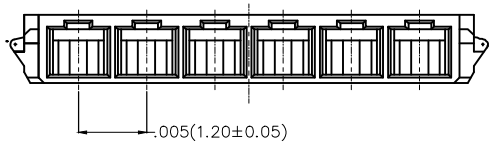
Circuits (n)	Part No.	Dimensions(in/mm)		
		A	B	C
2	FHG12002-S02M6K6B	.047(1.20)	.102(2.60)	.122(3.10)
3	FHG12002-S03M6K6B	.094(2.40)	.150(3.80)	.169(4.30)
4	FHG12002-S04M6K6B	.141(3.60)	.197(5.00)	.217(5.50)
5	FHG12002-S05M6K6B	.189(4.80)	.244(6.20)	.264(6.70)
6	FHG12002-S06M6K6B	.236(6.00)	.291(7.40)	.311(7.90)



Ordering Information

FHG 120 02 - S XX M 6 K6 B
 1 2 3 4 5 6 7 8 9

1 Category FHG-Housing	2 Series Number 120-Pitch1.20mm	3 Distinction No. 02	4 Row Option S-Single row
5 Circuits XX	6 Type M-Male	7 Material-Resin 6-PA46 △	8 Color-Resin K6-Black
		9 Packaging B-PE Bag	



THIRD ANGLE PROJECTION	GENERAL TOLERANCES (UNLESS SPECIFIED)		APPROVE BY	DATE	PART NO.	ITEM NO.	3K-KAMING®
	DESIGN UNITS Inch (metric)	X.±.012(0.30)	X'±5'	FRANK	20/JUN/17	FHG12002-SXXM6K6B	
SCALE	X.X±.008(0.20)	.X'±2'	CHECKED BY	DATE	TITLE	REV 1	SHEET NO. 1/1
5:1	X.XX±.006(0.15)	.XX'±1'	CHERRY	20/JUN/17	Wire to Board Pitch 1.2mm(Housing)		
SIZE A4	X.XXX±.004(0.10)	.XXX'±0.5'	DRAWN BY	DATE	THIS DRAWING CONTAINS INFORMATION THAT IS PROPRIETARY TO DONG GUAN LANG LUN(3K-KAMING) ELECTRONIC PRODUCTS CO., LTD. AND SHOULD NOT BE USED WITHOUT WRITTEN PERMISSION		
			LXF	20/JUN/17			