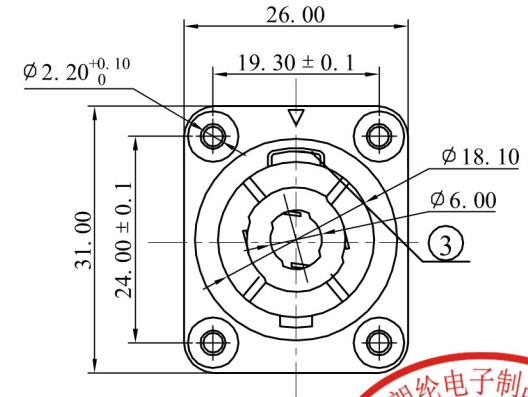
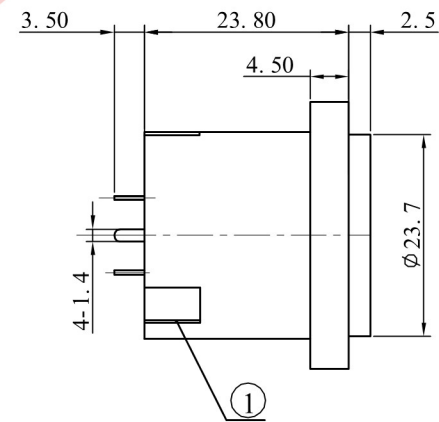
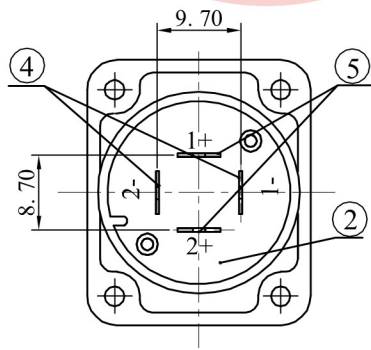
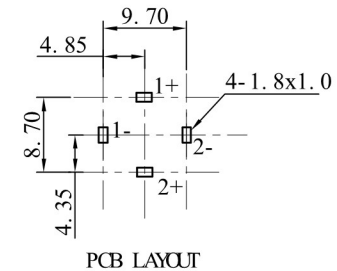
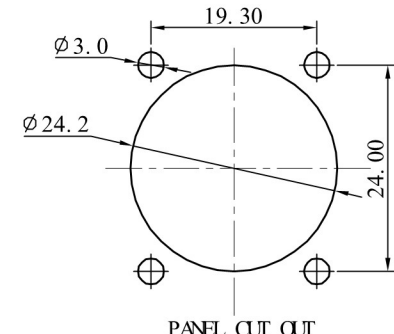
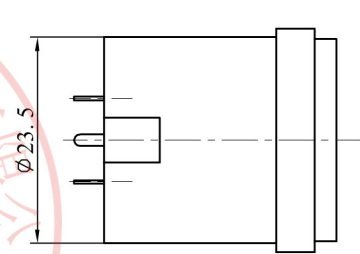



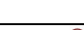


ALLOWANCE	
UNDER 3	± 0.1
3 TO 6	± 0.15
6 TO 15	± 0.2
15 TO 50	± 0.25
50 OVER	± 0.3



Specifications:
Rating :DC 250V,20A.
Force:5~40N.
Contact resistance:
Less than30m Ω .
Insulation resistance:
Over 100M Ω on DC 500V
measured.
Voltage withstand :
AC 500V,For 1 minute.



5	TERMINAL- B	BRONZE t=0.4	2	Ag PLATED	<div>PROJECTION</div> <div></div> <div>3K-KAMING</div>		<div></div> <div>东莞市朗纶电子制品有限公司</div> <div>Dongguan langlun electronic products Co., Ltd</div>				
4	TERMINAL- A	BRONZE t=0.4	2	Ag PLATED					MODEL NO :SPE-01C	ALLOWANCE:	DRAWN BY:
3	TERMINAL- E	STEEL	1						TYPE: XLR CABLE CONNECTORS	UNIT: mm	CHECKED BY:
2	COVER	PA66	1	BLACK					MATERIAL NO :	SCALE:	APPROVED BY:
1	HOUSE	PA66	1	BLACK							
NO	PART NAME	MATERIAL	QTY	FINISHING							