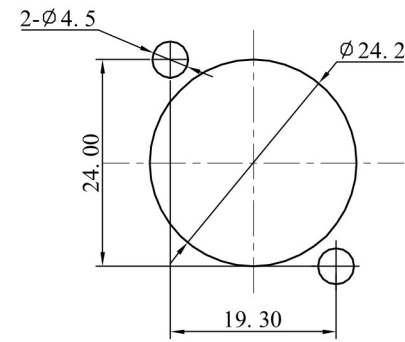
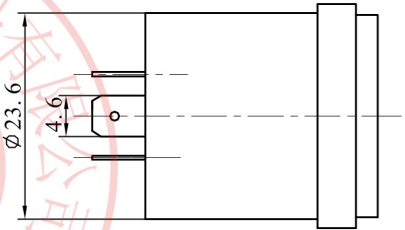
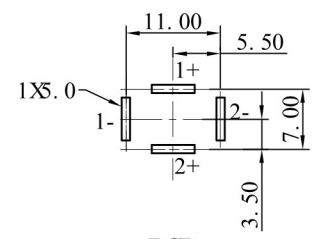


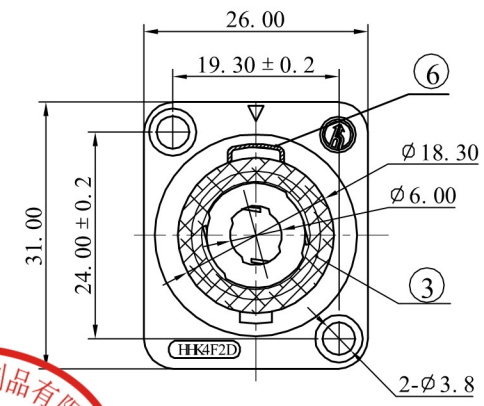
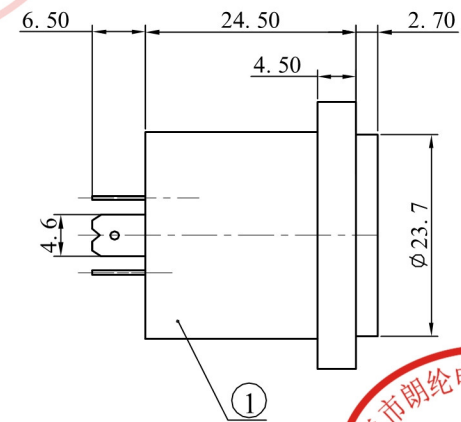
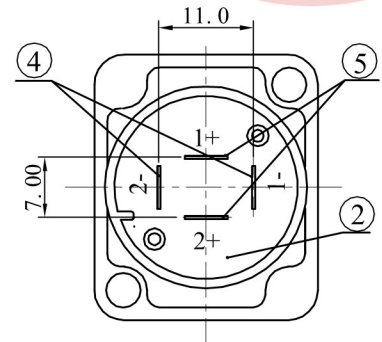
| ALLOWANCE | |
|-----------|--------|
| UNDER 3 | ± 0.1 |
| 3 TO 6 | ± 0.15 |
| 6 TO 15 | ± 0.2 |
| 15 TO 50 | ± 0.25 |
| 50 OVER | ± 0.3 |



PANEL CUT OUT



PCB



Specifications:
 Rating :DC 250V,20A.
 Force:5~40N.
 Contact resistance:
 Less than30m Ω.
 Insulation resistance:
 Over 100M Ω on DC 500V
 measured.
 Voltage withstand :
 AC 500V,For 1 minute.



| NQ | PART NAME | MATERIAL | QTY | FINISHING | MODEL NO :SPE-01J | ALLOWANCE: | DRAWN BY: |
|----|------------|-----------------|-----|-----------|-------------------|------------|--------------|
| 6 | TERMINAL-D | STAINLESS STEEL | 1 | | TYPE: SP SOCKET | UNIT: mm | CHECKED BY: |
| 5 | TERMINAL-B | BRONZE t=0.4 | 2 | Ag PLATED | MATERIAL NO : | SCALE: | APPROVED BY: |
| 4 | TERMINAL-A | BRONZE t=0.4 | 2 | Ag PLATED | PROJECTI ON | | |
| 3 | WASHER | RUBBER | 1 | BLACK | | | |
| 2 | COVER | PA66 | 1 | BLACK | | | |
| 1 | HOUSE | PA66 | 1 | BLACK | | | |
| | | | | | | | |



东莞市朗纶电子制品有限公司
 Dongguan langlun electronic products Co., Ltd