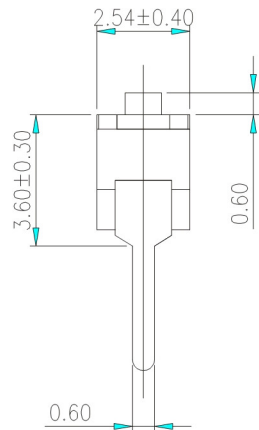
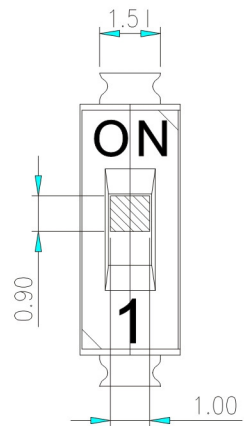
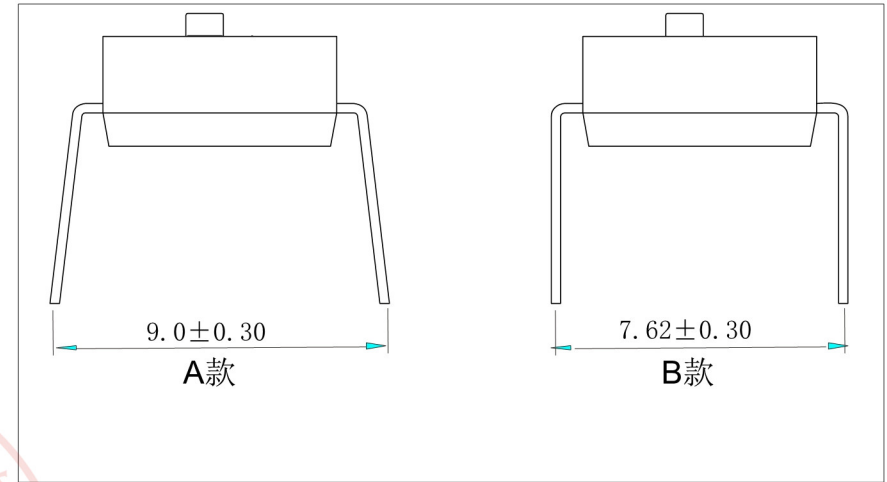
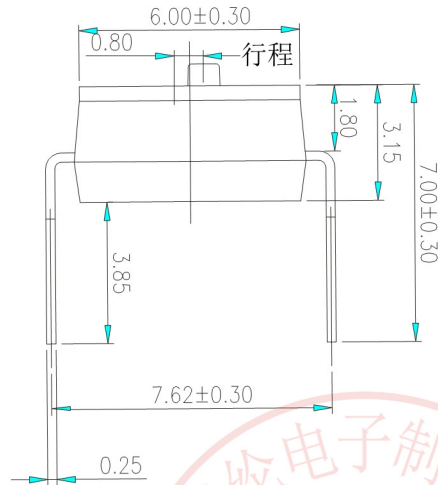
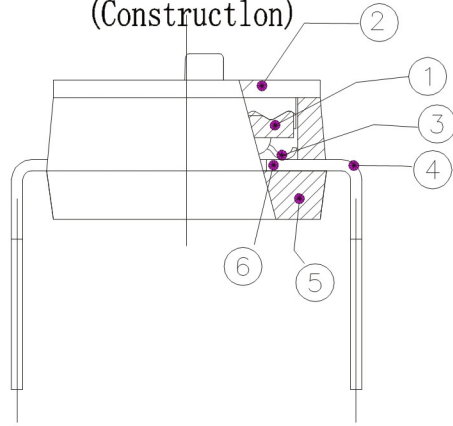




RoHS  
Compliant  
2002/95/EC

REV.	ECN.	NO.	APPD.

(Construction)



[Schematic]



RECOMMENDED P.C.B. LAYOUT (TOP VIEW)

Number	Part Name	Material	Finished	尺寸範圍	容許值	UNITS mm(IN)	 <b>东莞市朗纶电子制品有限公司</b> <b>Dongguan langlun electronic products Co., Ltd</b>		
①	Actuator	UL94 V0	White	0-4	±0.05	MAT'L			
②	Cover	UL94 V0	Black	4-16	±0.1	SEE NOTE			
③	Movable	Copper Alloy	3u"Gold	16-50	±0.15	FINISH			
④	Terminal	Brass	1u"Gold	<small>THESE DRAWINGS AND SPECIFICATIONS ARE THE PROPERTY OF ACCURATE 3K-KAMING (LANG LUN) INC. AND SHALL NOT BE REPRODUCED, COPIED OR USED IN ANY MANNER WITHOUT THE PRIOR WRITTEN CONSENT OF ACCURATE 3K-KAMING (LANG LUN) INC.</small>		SEE NOTE			
⑤	Base	UL94 V0	Black			Q'TY			
⑥	Terminal Contact	Brass	3u"Gold						
TITLE: MACHINE INSERT TABLE TYPE DIP SWITCH DR: <i>Ricky</i> 2014/04/08 CHKD: <i>Ricky</i> 2014/04/08 APPD:							PART NO.: <b>3K-RIR-01□</b> DWG NO.: <b>3K-RIR-01□</b>		
SCALE: 1:1    SHEET: 1/1    REV.: A    CUSTOMER DRAWING									