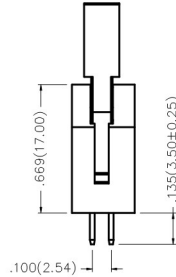
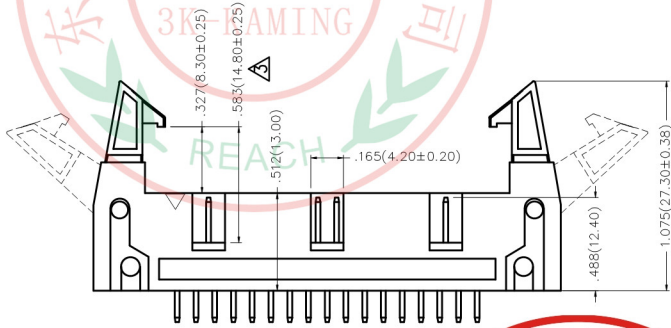
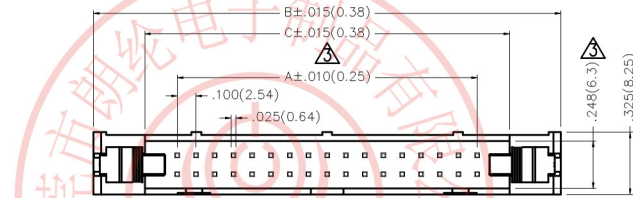


REV	LOCATIONS	DESCRIPTION	DATE	REVISER	APPD
1	△	Update version	18/JUN/15	KATE	FRANK
2	△	Update version	26/Apr/16	KEVIN	FRANK
3	△	Add dimensions	25/MAR/20	KATE	CHERRY



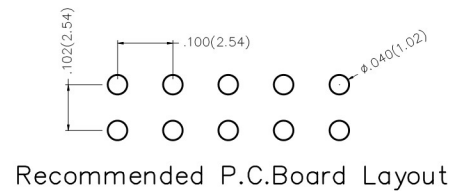
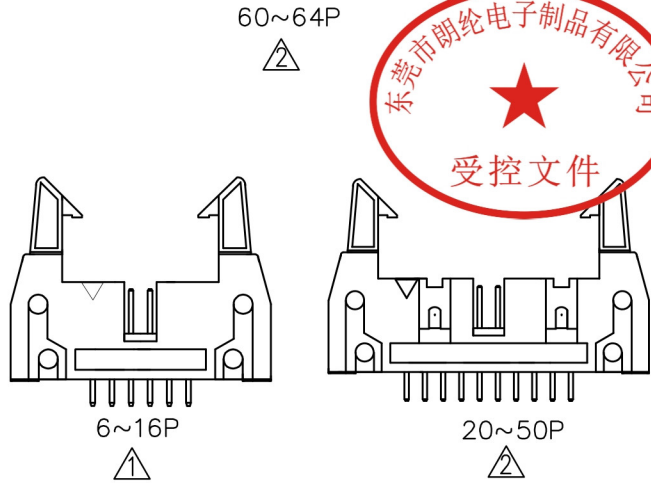
Electrical  
 Current Rating: 3.0A AC(rms)/DC  
 Voltage Rating: 250V AC(rms)/DC  
 Contact Resistance: 20 mΩ Max  
 Insulation Resistance: 1000 MΩ MIN  
 Withstanding Voltage: 500V AC r.m.s  
 Temperature Range—Operating: -40°C~+105°C  
 Material and Plating  
 Housing: Polyester (UL94V-0)  
 Contact Pin: Brass  
 Plating: Gold Plated/Selective gold in contact area, tin on tail



### Ordering Information

FBH 254 04 - D XX S X XX X K6 K  
 1 2 3 4 5 6 7 8 9 10 11

1	Category FBH—Box Header	2	Series Number 254—Pitch2.54mm	3	Distinction No. 04	4	Row Option D—Double Row	5	Circuits XX	6	Entry Angle S—180° Vertical
7	Plating 1—Gold Plated 3—Selective gold in contact area, tin on tail	8	Thickness of Plating 00—Gold Flash 05—5μ" Custom plate available	9	Material—Resin 1—PBT 4—PA6T	10	Color—Resin K6—Black	11	Packaging K—Tray		



Circuits (n)	Part No.	Dimensions(in/mm)			Circuits (n)	Part No.	Dimensions(in/mm)		
		A	B	C Δ			A	B	C Δ
6	FBH25404-D06SXXXXK6K	.200(5.08)	1.056(26.82)	.513(13.02)	26	FBH25404-D26SXXXXK6K	1.200(30.48)	2.055(52.22)	1.513(38.42)
8	FBH25404-D08SXXXXK6K	.300(7.62)	1.156(29.36)	.613(15.56)	30	FBH25404-D30SXXXXK6K	1.400(35.56)	2.256(57.30)	1.713(43.50)
10	FBH25404-D10SXXXXK6K	.400(10.16)	1.256(31.90)	.713(18.10)	32	FBH25404-D32SXXXXK6K	1.500(38.10)	2.356(59.84)	1.813(46.04)
12	FBH25404-D12SXXXXK6K	.500(12.70)	1.356(34.44)	.813(20.64)	34	FBH25404-D34SXXXXK6K	1.600(40.64)	2.456(62.38)	1.913(48.58)
14	FBH25404-D14SXXXXK6K	.600(15.24)	1.456(36.98)	.913(23.18)	40	FBH25404-D40SXXXXK6K	1.900(48.26)	2.756(70.00)	2.213(56.20)
16	FBH25404-D16SXXXXK6K	.700(17.78)	1.556(39.52)	1.013(25.72)	50	FBH25404-D50SXXXXK6K	2.400(60.96)	3.256(82.70)	2.713(68.90)
20	FBH25404-D20SXXXXK6K	.900(22.86)	1.756(44.60)	1.213(30.80)	60	FBH25404-D60SXXXXK6K	2.900(73.66)	3.756(95.40)	3.213(81.60)
24	FBH25404-D24SXXXXK6K	1.100(27.94)	1.956(49.68)	1.413(35.88)	64	FBH25404-D64SXXXXK6K	3.100(78.74)	3.956(100.48)	3.413(86.68)

THIRD ANGLE PROJECTION	GENERAL TOLERANCES (UNLESS SPECIFIED)		APPROVE BY	DATE	PART NO.	ITEM NO.		
	X.±.012(0.30)	X.±5'	FRANK	19/JUL/13	FBH25404-DXXSXXXXK6K	FBH25404		
DESIGN UNITS Inch (metric)	X.X±.008(0.20)	.X'±2'	CHECKED BY	DATE	TITLE			
SCALE 5:1	X.XX±.006(0.15)	.XX'±1'	CHERRY	19/JUL/13	Wire to Board(Box Header) Pitch 2.54mm Vertical 180°(DIP)			
SIZE A4	X.XXX±.004(0.10)	.XXX'±0.5'	DRAWN BY	DATE	THIS DRAWING CONTAINS INFORMATION THAT IS PROPRIETARY TO DONG GUAN LANG LUN(3K-KAMING) ELECTRONIC PRODUCTS CO.,LTD. AND SHOULD NOT BE USED WITHOUT WRITTEN PERMISSION		REV 3	SHEET NO. 1/1
			JACOB	19/JUL/13				